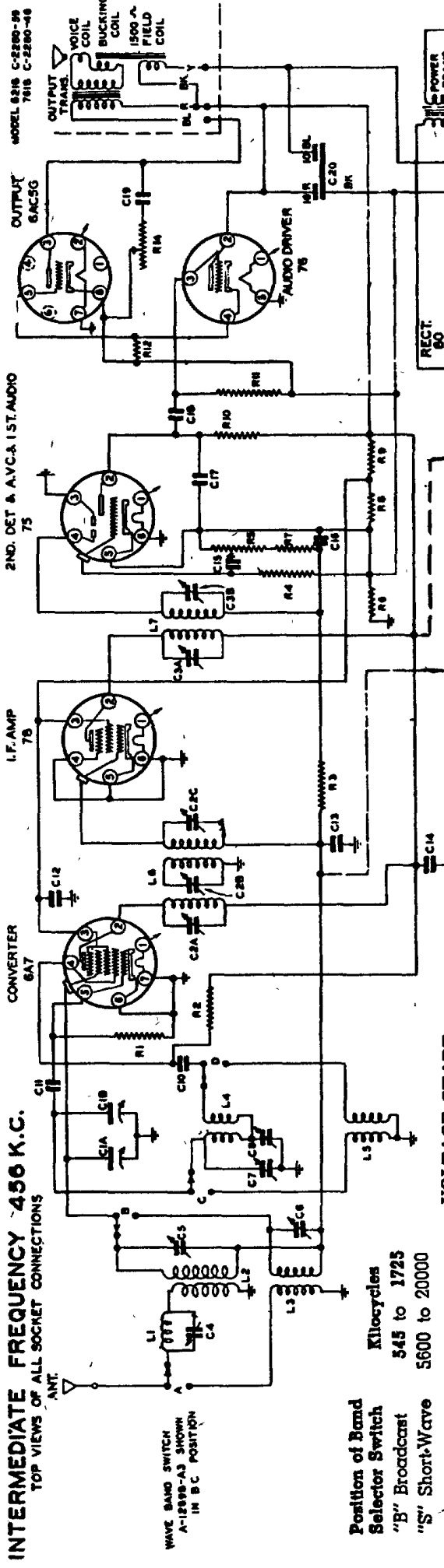


CHASSIS 629



VOLTAGE CHART

Line Voltage: 115 volts

Position of Volume Control: Full with Antenna Disconnected

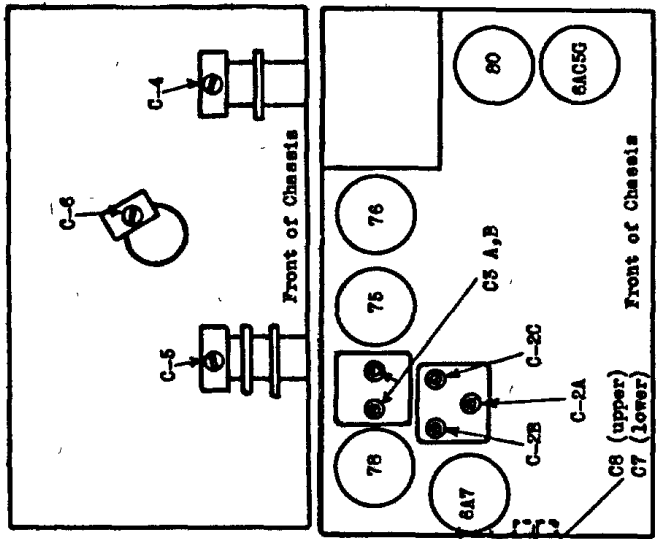
Tube	Function	Voltage of Socket Prongs to Gnd. (See Prong Nos. on Schematic Diagram)							
		No. 1	No. 2	No. 3	No. 4	No. 5	No. 6	No. 7	No. 8
6A7	Converter	6.1	250	60	150	0	0	0	0
78	I.F. Amp.	6.1	250	60	0	0	0	0	0
75	2nd Det. AVC-Audio	6.1	57	0	-5	0	0	0	-7
76	Driver	6.1	250	0	10	0	0	0	0
6AC5G	P.A.	0	0	225	0	10	0	6.1	0
80	Rectifier	825	270	270	825	0	0	0	0
8075	Tuning Indicator	6.1	50	-2	250	0	0	0	0

Notes: Voltage readings are for schematic diagram. Allow 15% + or - on all measurements. Always use meter scale which will give greatest deflection within scale limits. All DC measurements made with 1000 ohm per volt voltmeter. All AC voltages made with rectifier type voltmeter. Unless designated otherwise, voltages in table are + DC voltages.

ALIGNMENT

OPERATION	ALIGNMENT OF	GENERATOR CONNECTED TO	ANTENNA	GENERATOR FREQUENCY	BAND SWITCH SETTING	TONING COND. SETTING	TRIMMER	REMARKS
1	(Set dial pointer to last mark on scale when condenser plates are flush)							
2	I.F.	6A7 Grid 4	.1 mf.	456 KC	BC	Open		C5A, B, C2A, B, C Adjust to approx. peak
3								C2B (Transfer) Detune by tightening & t.
4								C5A, B, C2A, C Peak accurately
5								C2B Peak accurately
6	Reflector	Ant.	200 mf.	456 KC	BC	Open		Adjust to minimum
7	Broad-cast	Ant.	200 mf.	1500 KC	BC	1500 KC		Peak accurately
8	Band			600 KC	BC	600 KC		Peak accurately
9								
10	(Repeat operations 7 and 8)							
11	(Check calibration and sensitivity at 600 KC, 1000 KC and 1800 KC)							
12	S.W. Band	Ant.	* 18 MC	SW	* 18 MC	C6 SW ant trim	**	
13	(Check calibration and sensitivity at 6.0 MC and 18 MC)							
14	(Check operations 1 to 18 inclusive)							

*100 ohm non-inductive resistor and 200 mf. condenser in series.
 **Rock dial while making this adjustment. Make certain that adjustment is made on fundamental signal and not on image. Peak accurately.



- L1 I.F. REFLECTOR COIL A-14877
- L2 I.F. ANT. COIL A-14878-1
- L3 I.F. ANT. COIL A-14882-1
- L4 I.F. OSC. COIL A-14883-8A
- L5 I.F. OSC. COIL A-14884-1
- L6 I.F. OSC. COIL A-14885-17
- L7 I.F. OSC. COIL A-14886-17
- C1A 50 MFD 400V C-3504-2C
- C1B 50 MFD 400V C-3504-2C
- C1C 50 MFD 400V C-3504-2C
- C1D 50 MFD 400V C-3504-2C
- C1E 50 MFD 400V C-3504-2C
- C1F 50 MFD 400V C-3504-2C
- C1G 50 MFD 400V C-3504-2C
- C1H 50 MFD 400V C-3504-2C
- C1I 50 MFD 400V C-3504-2C
- C1J 50 MFD 400V C-3504-2C
- C1K 50 MFD 400V C-3504-2C
- C1L 50 MFD 400V C-3504-2C
- C1M 50 MFD 400V C-3504-2C
- C1N 50 MFD 400V C-3504-2C
- C1O 50 MFD 400V C-3504-2C
- C1P 50 MFD 400V C-3504-2C
- C1Q 50 MFD 400V C-3504-2C
- C1R 50 MFD 400V C-3504-2C
- C1S 50 MFD 400V C-3504-2C
- C1T 50 MFD 400V C-3504-2C
- C1U 50 MFD 400V C-3504-2C
- C1V 50 MFD 400V C-3504-2C
- C1W 50 MFD 400V C-3504-2C
- C1X 50 MFD 400V C-3504-2C
- C1Y 50 MFD 400V C-3504-2C
- C1Z 50 MFD 400V C-3504-2C
- C2A 50 MFD 400V C-3504-2C
- C2B 50 MFD 400V C-3504-2C
- C2C 50 MFD 400V C-3504-2C
- C2D 50 MFD 400V C-3504-2C
- C2E 50 MFD 400V C-3504-2C
- C2F 50 MFD 400V C-3504-2C
- C2G 50 MFD 400V C-3504-2C
- C2H 50 MFD 400V C-3504-2C
- C2I 50 MFD 400V C-3504-2C
- C2J 50 MFD 400V C-3504-2C
- C2K 50 MFD 400V C-3504-2C
- C2L 50 MFD 400V C-3504-2C
- C2M 50 MFD 400V C-3504-2C
- C2N 50 MFD 400V C-3504-2C
- C2O 50 MFD 400V C-3504-2C
- C2P 50 MFD 400V C-3504-2C
- C2Q 50 MFD 400V C-3504-2C
- C2R 50 MFD 400V C-3504-2C
- C2S 50 MFD 400V C-3504-2C
- C2T 50 MFD 400V C-3504-2C
- C2U 50 MFD 400V C-3504-2C
- C2V 50 MFD 400V C-3504-2C
- C2W 50 MFD 400V C-3504-2C
- C2X 50 MFD 400V C-3504-2C
- C2Y 50 MFD 400V C-3504-2C
- C2Z 50 MFD 400V C-3504-2C
- C3A 50 MFD 400V C-3504-2C
- C3B 50 MFD 400V C-3504-2C
- C3C 50 MFD 400V C-3504-2C
- C3D 50 MFD 400V C-3504-2C
- C3E 50 MFD 400V C-3504-2C
- C3F 50 MFD 400V C-3504-2C
- C3G 50 MFD 400V C-3504-2C
- C3H 50 MFD 400V C-3504-2C
- C3I 50 MFD 400V C-3504-2C
- C3J 50 MFD 400V C-3504-2C
- C3K 50 MFD 400V C-3504-2C
- C3L 50 MFD 400V C-3504-2C
- C3M 50 MFD 400V C-3504-2C
- C3N 50 MFD 400V C-3504-2C
- C3O 50 MFD 400V C-3504-2C
- C3P 50 MFD 400V C-3504-2C
- C3Q 50 MFD 400V C-3504-2C
- C3R 50 MFD 400V C-3504-2C
- C3S 50 MFD 400V C-3504-2C
- C3T 50 MFD 400V C-3504-2C
- C3U 50 MFD 400V C-3504-2C
- C3V 50 MFD 400V C-3504-2C
- C3W 50 MFD 400V C-3504-2C
- C3X 50 MFD 400V C-3504-2C
- C3Y 50 MFD 400V C-3504-2C
- C3Z 50 MFD 400V C-3504-2C
- C4A 50 MFD 400V C-3504-2C
- C4B 50 MFD 400V C-3504-2C
- C4C 50 MFD 400V C-3504-2C
- C4D 50 MFD 400V C-3504-2C
- C4E 50 MFD 400V C-3504-2C
- C4F 50 MFD 400V C-3504-2C
- C4G 50 MFD 400V C-3504-2C
- C4H 50 MFD 400V C-3504-2C
- C4I 50 MFD 400V C-3504-2C
- C4J 50 MFD 400V C-3504-2C
- C4K 50 MFD 400V C-3504-2C
- C4L 50 MFD 400V C-3504-2C
- C4M 50 MFD 400V C-3504-2C
- C4N 50 MFD 400V C-3504-2C
- C4O 50 MFD 400V C-3504-2C
- C4P 50 MFD 400V C-3504-2C
- C4Q 50 MFD 400V C-3504-2C
- C4R 50 MFD 400V C-3504-2C
- C4S 50 MFD 400V C-3504-2C
- C4T 50 MFD 400V C-3504-2C
- C4U 50 MFD 400V C-3504-2C
- C4V 50 MFD 400V C-3504-2C
- C4W 50 MFD 400V C-3504-2C
- C4X 50 MFD 400V C-3504-2C
- C4Y 50 MFD 400V C-3504-2C
- C4Z 50 MFD 400V C-3504-2C
- C5A 50 MFD 400V C-3504-2C
- C5B 50 MFD 400V C-3504-2C
- C5C 50 MFD 400V C-3504-2C
- C5D 50 MFD 400V C-3504-2C
- C5E 50 MFD 400V C-3504-2C
- C5F 50 MFD 400V C-3504-2C
- C5G 50 MFD 400V C-3504-2C
- C5H 50 MFD 400V C-3504-2C
- C5I 50 MFD 400V C-3504-2C
- C5J 50 MFD 400V C-3504-2C
- C5K 50 MFD 400V C-3504-2C
- C5L 50 MFD 400V C-3504-2C
- C5M 50 MFD 400V C-3504-2C
- C5N 50 MFD 400V C-3504-2C
- C5O 50 MFD 400V C-3504-2C
- C5P 50 MFD 400V C-3504-2C
- C5Q 50 MFD 400V C-3504-2C
- C5R 50 MFD 400V C-3504-2C
- C5S 50 MFD 400V C-3504-2C
- C5T 50 MFD 400V C-3504-2C
- C5U 50 MFD 400V C-3504-2C
- C5V 50 MFD 400V C-3504-2C
- C5W 50 MFD 400V C-3504-2C
- C5X 50 MFD 400V C-3504-2C
- C5Y 50 MFD 400V C-3504-2C
- C5Z 50 MFD 400V C-3504-2C
- C6A 50 MFD 400V C-3504-2C
- C6B 50 MFD 400V C-3504-2C
- C6C 50 MFD 400V C-3504-2C
- C6D 50 MFD 400V C-3504-2C
- C6E 50 MFD 400V C-3504-2C
- C6F 50 MFD 400V C-3504-2C
- C6G 50 MFD 400V C-3504-2C
- C6H 50 MFD 400V C-3504-2C
- C6I 50 MFD 400V C-3504-2C
- C6J 50 MFD 400V C-3504-2C
- C6K 50 MFD 400V C-3504-2C
- C6L 50 MFD 400V C-3504-2C
- C6M 50 MFD 400V C-3504-2C
- C6N 50 MFD 400V C-3504-2C
- C6O 50 MFD 400V C-3504-2C
- C6P 50 MFD 400V C-3504-2C
- C6Q 50 MFD 400V C-3504-2C
- C6R 50 MFD 400V C-3504-2C
- C6S 50 MFD 400V C-3504-2C
- C6T 50 MFD 400V C-3504-2C
- C6U 50 MFD 400V C-3504-2C
- C6V 50 MFD 400V C-3504-2C
- C6W 50 MFD 400V C-3504-2C
- C6X 50 MFD 400V C-3504-2C
- C6Y 50 MFD 400V C-3504-2C
- C6Z 50 MFD 400V C-3504-2C
- C7A 50 MFD 400V C-3504-2C
- C7B 50 MFD 400V C-3504-2C
- C7C 50 MFD 400V C-3504-2C
- C7D 50 MFD 400V C-3504-2C
- C7E 50 MFD 400V C-3504-2C
- C7F 50 MFD 400V C-3504-2C
- C7G 50 MFD 400V C-3504-2C
- C7H 50 MFD 400V C-3504-2C
- C7I 50 MFD 400V C-3504-2C
- C7J 50 MFD 400V C-3504-2C
- C7K 50 MFD 400V C-3504-2C
- C7L 50 MFD 400V C-3504-2C
- C7M 50 MFD 400V C-3504-2C
- C7N 50 MFD 400V C-3504-2C
- C7O 50 MFD 400V C-3504-2C
- C7P 50 MFD 400V C-3504-2C
- C7Q 50 MFD 400V C-3504-2C
- C7R 50 MFD 400V C-3504-2C
- C7S 50 MFD 400V C-3504-2C
- C7T 50 MFD 400V C-3504-2C
- C7U 50 MFD 400V C-3504-2C
- C7V 50 MFD 400V C-3504-2C
- C7W 50 MFD 400V C-3504-2C
- C7X 50 MFD 400V C-3504-2C
- C7Y 50 MFD 400V C-3504-2C
- C7Z 50 MFD 400V C-3504-2C
- C8A 50 MFD 400V C-3504-2C
- C8B 50 MFD 400V C-3504-2C
- C8C 50 MFD 400V C-3504-2C
- C8D 50 MFD 400V C-3504-2C
- C8E 50 MFD 400V C-3504-2C
- C8F 50 MFD 400V C-3504-2C
- C8G 50 MFD 400V C-3504-2C
- C8H 50 MFD 400V C-3504-2C
- C8I 50 MFD 400V C-3504-2C
- C8J 50 MFD 400V C-3504-2C
- C8K 50 MFD 400V C-3504-2C
- C8L 50 MFD 400V C-3504-2C
- C8M 50 MFD 400V C-3504-2C
- C8N 50 MFD 400V C-3504-2C
- C8O 50 MFD 400V C-3504-2C
- C8P 50 MFD 400V C-3504-2C
- C8Q 50 MFD 400V C-3504-2C
- C8R 50 MFD 400V C-3504-2C
- C8S 50 MFD 400V C-3504-2C
- C8T 50 MFD 400V C-3504-2C
- C8U 50 MFD 400V C-3504-2C
- C8V 50 MFD 400V C-3504-2C
- C8W 50 MFD 400V C-3504-2C
- C8X 50 MFD 400V C-3504-2C
- C8Y 50 MFD 400V C-3504-2C
- C8Z 50 MFD 400V C-3504-2C
- C9A 50 MFD 400V C-3504-2C
- C9B 50 MFD 400V C-3504-2C
- C9C 50 MFD 400V C-3504-2C
- C9D 50 MFD 400V C-3504-2C
- C9E 50 MFD 400V C-3504-2C
- C9F 50 MFD 400V C-3504-2C
- C9G 50 MFD 400V C-3504-2C
- C9H 50 MFD 400V C-3504-2C
- C9I 50 MFD 400V C-3504-2C
- C9J 50 MFD 400V C-3504-2C
- C9K 50 MFD 400V C-3504-2C
- C9L 50 MFD 400V C-3504-2C
- C9M 50 MFD 400V C-3504-2C
- C9N 50 MFD 400V C-3504-2C
- C9O 50 MFD 400V C-3504-2C
- C9P 50 MFD 400V C-3504-2C
- C9Q 50 MFD 400V C-3504-2C
- C9R 50 MFD 400V C-3504-2C
- C9S 50 MFD 400V C-3504-2C
- C9T 50 MFD 400V C-3504-2C
- C9U 50 MFD 400V C-3504-2C
- C9V 50 MFD 400V C-3504-2C
- C9W 50 MFD 400V C-3504-2C
- C9X 50 MFD 400V C-3504-2C
- C9Y 50 MFD 400V C-3504-2C
- C9Z 50 MFD 400V C-3504-2C
- C10A 50 MFD 400V C-3504-2C
- C10B 50 MFD 400V C-3504-2C
- C10C 50 MFD 400V C-3504-2C
- C10D 50 MFD 400V C-3504-2C
- C10E 50 MFD 400V C-3504-2C
- C10F 50 MFD 400V C-3504-2C
- C10G 50 MFD 400V C-3504-2C
- C10H 50 MFD 400V C-3504-2C
- C10I 50 MFD 400V C-3504-2C
- C10J 50 MFD 400V C-3504-2C
- C10K 50 MFD 400V C-3504-2C
- C10L 50 MFD 400V C-3504-2C
- C10M 50 MFD 400V C-3504-2C
- C10N 50 MFD 400V C-3504-2C
- C10O 50 MFD 400V C-3504-2C
- C10P 50 MFD 400V C-3504-2C
- C10Q 50 MFD 400V C-3504-2C
- C10R 50 MFD 400V C-3504-2C
- C10S 50 MFD 400V C-3504-2C
- C10T 50 MFD 400V C-3504-2C
- C10U 50 MFD 400V C-3504-2C
- C10V 50 MFD 400V C-3504-2C
- C10W 50 MFD 400V C-3504-2C
- C10X 50 MFD 400V C-3504-2C
- C10Y 50 MFD 400V C-3504-2C
- C10Z 50 MFD 400V C-3504-2C