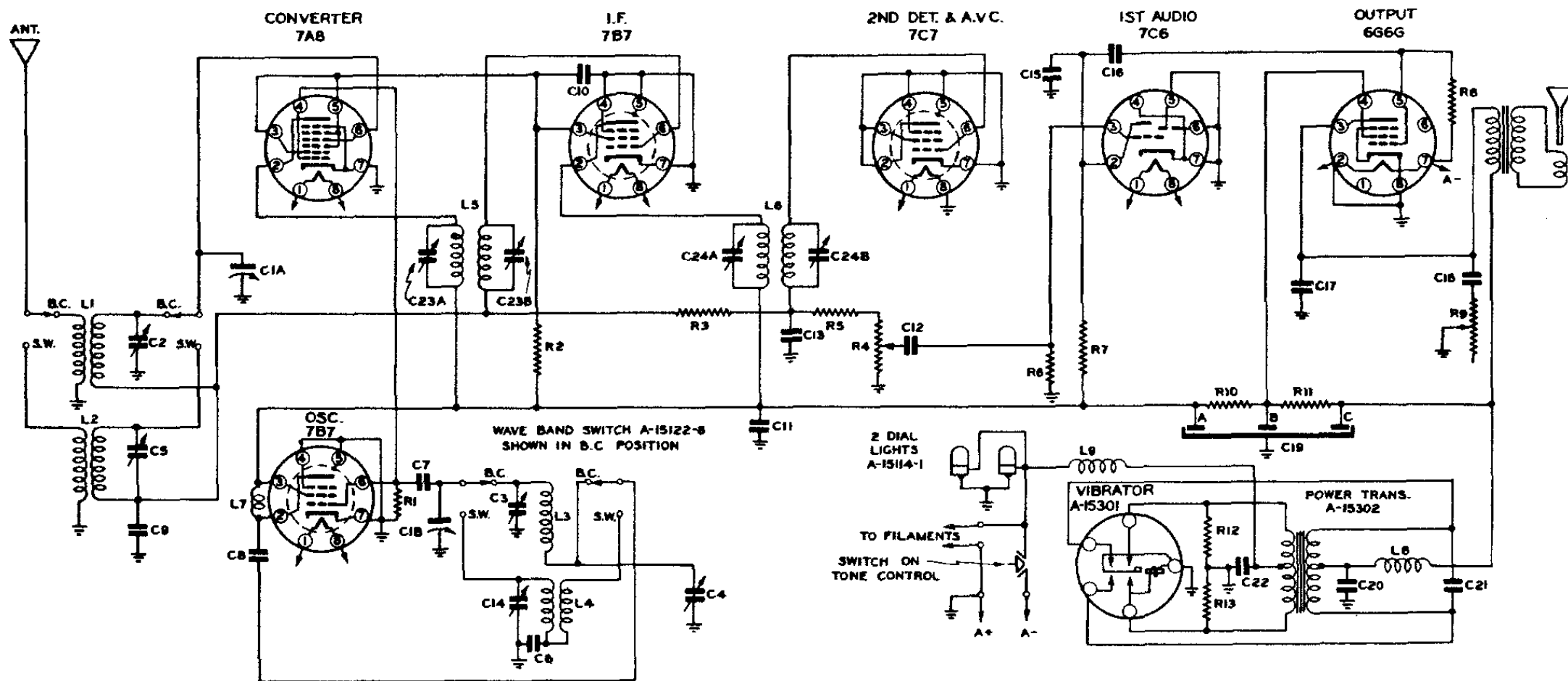


Spiegel

SCHEMATIC DIAGRAM **AIR CASTLE SUPERHETERODYNE MODEL 631-6** **INTERMEDIATE FREQUENCY 456 K.C.**

BOTTOM VIEWS OF ALL SOCKET CONNECTIONS



C1A&B VARIABLE CONDENSER
 C2 B.C. ANT. TRIMMER
 C3 B.C. OSC. TRIMMER
 C4 B.C. OSC. PADDER
 C5 S.W. ANT. TRIMMER
 C6 2700 MMF. MICA
 C7 50 MMF. MICA
 C8 250 MMF. MICA
 C9 .05 MFD. 200V
 C10 .1 MFD. 200V.
 C11 .1 MFD. 200V.
 C12 .02 MFD. 200V.

B-7229
 A-14088-8
 B-7199-EY
 A-14088-5
 A-15451
 C-720-315
 C-720-324
 C-3202-84C
 C-3202-38C
 C-3202-38C
 C-3202-22C

C13 250 MMF. MICA
 C14 S.W. OSC. TRIMMER
 C15 250 MMF. MICA
 C16 .05 MFD. 200V.
 C17 .001 MFD. 400V.
 C18 .02 MFD. 400V.
 C19A,B,C 20-20-20 MFD. 150V. ELECT.
 C20 1000 MMF. MICA
 C21 .01 MFD. 600V
 C22 5 MFD 120V
 C23 NO.1 I.F. TRIMMER
 C24 NO.2 I.F. TRIMMER

C-720-324
 A-14088-8
 C-720-324
 C-3202-28C
 C-3204-58C
 C-3204-78C
 A-14684-8
 C-720-297
 C-3206-132C
 C-3203-46B
 B-7200-GN
 B-7200-GN
 R1 56,000 Ω .25W
 R2 18,000 Ω .5W.
 R3 1 MEGOHM .25W
 R4 500,000 Ω VOLUME CONT.
 R5 47,000 Ω .25W.
 R6 4.7 MEGOHM .25W
 R7 220,000 Ω .25W
 R8 1 MEGOHM .25W
 R9 TONE CONTROL & SWITCH
 R10 330 Ω .5W.
 R11 68 Ω .5W
 R12 68 Ω .5W.
 R13 68 Ω .5W

C-2795-83B
 C-2796-77C
 C-2795-98B
 A-15130-3
 C-2795-23B
 C-2795-35B
 C-2795-27B
 C-2795-98B
 A-15128-2
 C-2796-10C
 C-2796-48C
 C-2796-6C
 C-2796-6C

L1 B.C. ANT. COIL A-15349-1
 L2 S.W. ANT. COIL A-14682-3
 L3 B.C. OSC. COIL A-15352-1
 L4 S.W. OSC. COIL A-15233-5
 L5 NO.1 I.F. COIL A-12064-39
 L6 NO.2 I.F. COIL A-12064-17
 L7 B+ PLATE CHOKE A-14681-1
 L8 B+ HASH CHOKE A-14716-2
 L9 A LEAD HASH CHOKE A-14944