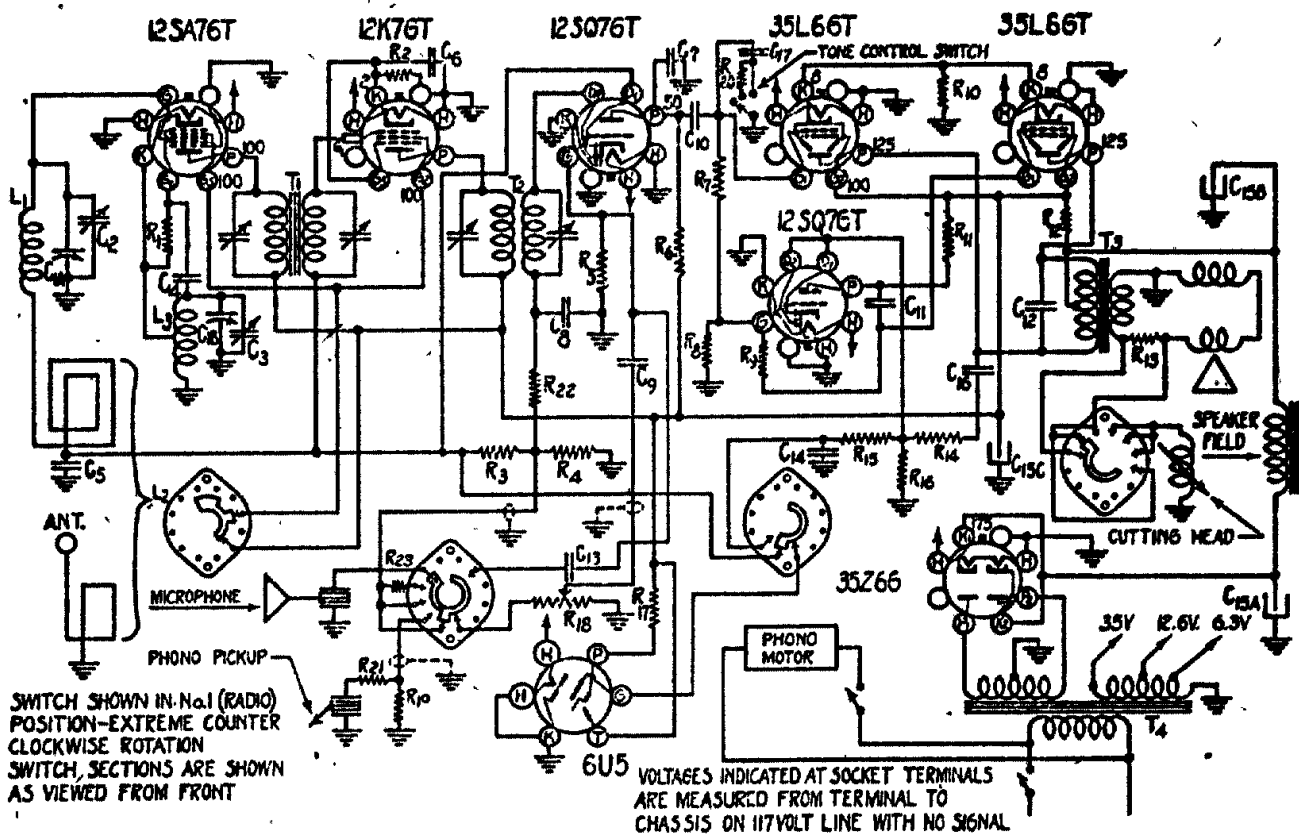


SPIEGEL

MODEL 390



IF PEAK 455 KC

Schematic Location	Part Number	Description	Schematic Location	Part Number	Description
		CHASSIS PARTS			
	4417	Button, Snap (Dial Mounting)	R3,4,14,16		Resistor, 1 Meg. 1/3 Watt
	8931	Cable, Tuning Tube	R5		Resistor, 10 Meg. 1/3 Watt
	2163	Cable, drive	R6,7,8,9,11		Resistor, 200M. 1/3 Watt
	3227	Cap, Grid	R10		Resistor, 120 Ohm, 1/2 Watt
R18	8910	Control, Volume and Switch	R12		Resistor, 1000 Ohm, 1 Watt
	1732	Cord, Line	R13		Resistor, 35 Ohm, 1/2 Watt
	6424	Clamp, Linecord	R15		Resistor, 2 Meg. 1/3 Watt
	4314	Clamp, Tapped-For Tuning Tube	R17		Resistor, 1 Meg. (in Tuning Tube Socket)
	4315	Clamp, Plain-For Tuning Tube	R19,20,21,22		Resistor, 50M, 1/3 Watt
	8422	Coil, Oscillator	R23		Resistor, 4 Meg. 1/3 Watt
L3	8423	Coil, Tracking		8440	Socket, Dual Dial Lamp
L1	8911	Condenser, Variable (with Pulley)		8648	Spring, Drive Cable
C1a,b	8504	Condenser, Dual Trimmer		8427	Shaft, Drive
C2,3	8425	Condenser, Electrolytic (20-250)-(20-150)-(20-150)		8428	Switch, Tone Control
C15a,b,c				8932	Switch, Master Control
C4		Condenser, 100 Mmf. Mica		8919	Speaker, 6 1/2" Dynamic
C5,14		Condenser, 1 Mfd. 200 v.	T4	8918	Transformer, Power, 60 cycle
C6		Condenser, .05 Mfd. 200 v.	T4	8933	Transformer, Power, 50 cycle
C7		Condenser, 250 Mmf. Mica	T3	89191	Transformer, Output
C8		Condenser, 100 Mmf. Mica	T1	8434	Transformer, 1st IF
C9		Condenser, .002 Mfd. 600 v.	T2	8435	Transformer, 2nd IF
C10,16		Condenser, .01 Mfd. 400 v.			CABINET ASSEMBLY PARTS
C11		Condenser, .05 Mfd. 400 v.			Back for Cabinet
C12,13		Condenser, .001 Mfd. 600 v.			Book, Instruction
C17		Condenser, .005 Mfd. 600 v.		8462	Bushing, Rubber (Recorder Unit Mfg.)
	7209	Grommet, Tuner Assembly Mtg.		9205	Carton, Shipping
	9121	Dial Chart		9210	Cabinet
	8941	Microphone Socket Assembly		9206	Escutcheon
	6244	Pulley, Idler		2750	Knob, Motor Switch
	5026	Pointer		8487	Knob, Tuning
	6158	Pilot Lite		8488	Knob, Tone
	1207	Retainer, "C" Washer (Holds Tuning Shaft)		8489	Knob, Volume
R1		Resistor, 20M, 1/3 Watt		8925	Knob, Master Control Switch
R2		Resistor, 200 Ohm, 1/3 Watt		8491	Loop Antenna Assembly