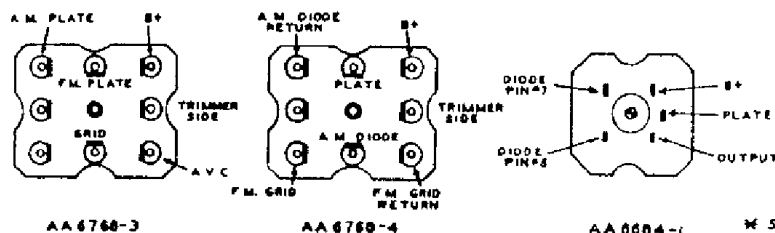


BOTTOM VIEWS OF ALL SOCK



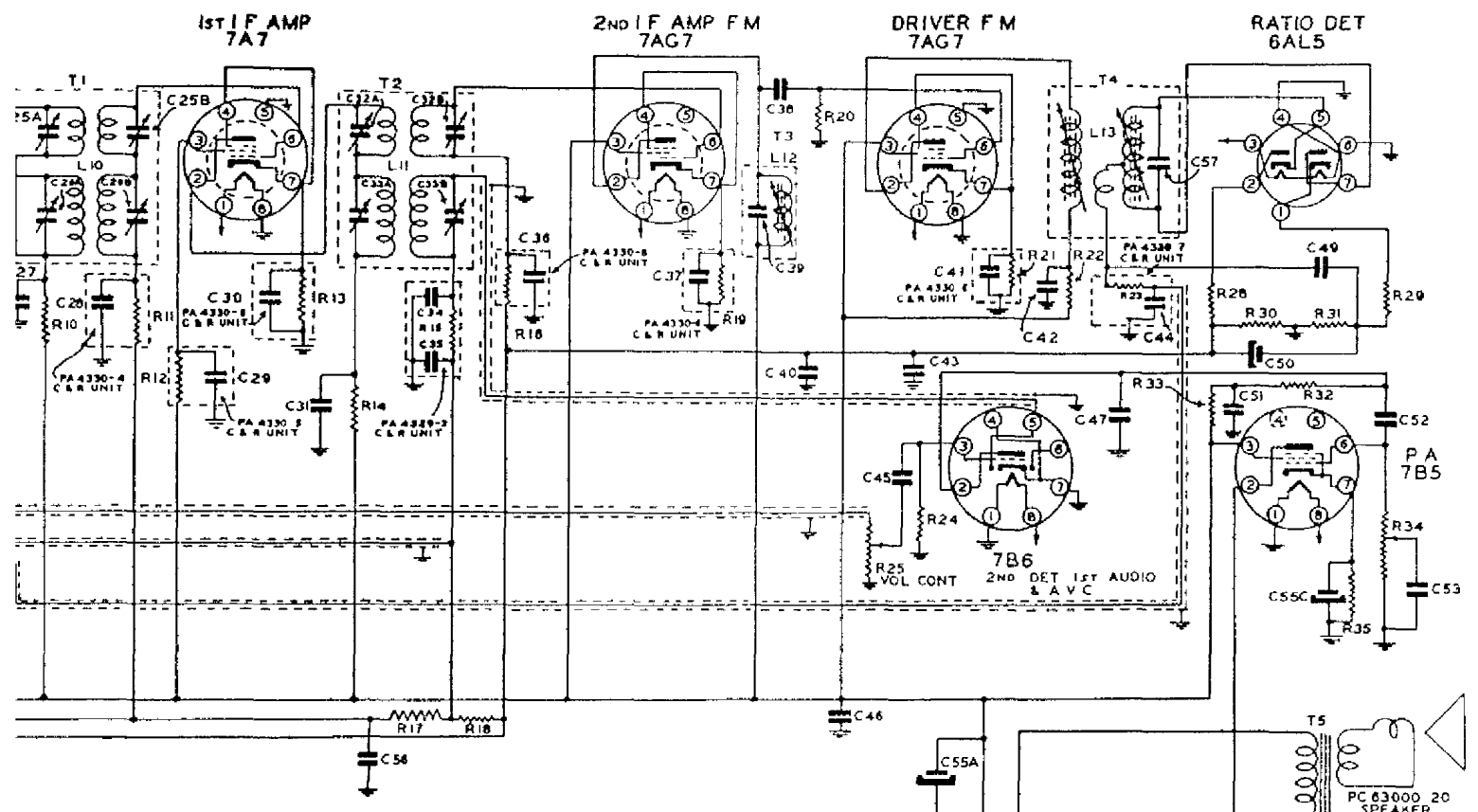
TERMINAL HOOKUP FOR T1, T2 & T4
BOTTOM VIEW

DESCRIPTION	PART NO.	LOCATION	DESCRIPTION	PART NO.	LOCATION	DESCRIPTION	PART NO.	
C1A BC 3 GANG CONDENSER	PC65001	P-1-N-RP II	C49 330 MMF CERAMIC	HK35F-331	P-32	R1 2200 OHMS	5W	BR125-272
C12 AM ANT TRIMMER	PA4352-1	P-4	C50 3 MFD 50V ELECT	PA4308-1	O-31	R2 1 MEG	5W	BR125-105
C3 FM ANT TRIMMER	PA4368	P-5	C51 05 MFD 400 V	PC40GL-503	N-30	R3 68	5W	BR125-680
C4 FM ANT PADDER 51MMF	PA4328-8	P-5	C52 02 MFD 400 V	PC40GL-203	N-32	R4 33,000	5W	BR125-333
C5 51 MMF MICA	MC60G-510	N-2	C53 01 MFD 200V TUBULAR	PC40GR-103	L-33	R5 47	5W	BR125-470
C6 02 MFD CERAMIC	HK35G-203	L-3	C54 006 MFD 1000 V	PC40GN-602	L-30	R6 1 MEG	5W	BR125-105
C7 10 MMF CERAMIC	CC31H-100K	L-7	C55A,B,C 40-40-20 MFD ELECT	PA4307-3	J 27-6-21 U-32	R7 22,000	5W	BR125-223
C8 1000 MMF MOLDED PAPER	PA4325-1	P-8	C56 01 MFD 400V	PC40FL-103	K-21	R8 22,000	2W	DR125-223
C9 10,000 MMF MOLDED PAPER	PA4325-2	M-6	C57 33 MMF MICA	MC65E-330	Q-30	R9 1 MEG	5W	BR125-105
C10 1000 MMF MOLDED PAPER	PA4328-5	R-10				R10 1000	5W	BR125-102
C11 5 MMF CERAMIC	CC31H-510K	P-9				R11 100,000	(C & R UNIT)	PA4330-4
C12 51 MMF CERAMIC	PA4352-1	P-10				R12 22,000	(C & R UNIT)	PA4330-5
C13 B C R F TRIMMER	PC40GG-503	P-10				R13 270	(C & R UNIT)	PA4330-6
C14 05 MFD 200V TUBULAR	PA4352-3	N-10				R14 1000 OHMS	5W	BR125-102
C15 AM OSC TRIMMER	PA4352-8	M-10				R15 50,000	(C & R UNIT)	PA4329-3
C16 B C OSC PADDER	CC31H-150K	L-10				R16 1 MEG	(C & R UNIT)	PA4330-6
C17 15 MMF CERAMIC	PA4368	P-12				R17 100,000	5W	BR125-104
C18 FM R F TRIMMER	PA4328-2	Q-12				R18 330,000	5W	BR125-334
C19 FM R F PADDER (46 MMF)	PA4328-6	N-12				R19 270	(C & R UNIT)	PA4330-6
C20 FM OSC PADDER (85MMF)	PA4366	N-12				R20 15000	5W	BR125-153
C21 FM OSC TRIMMER	MC60G-510	O-13				R21 270	(C & R UNIT)	PA4330-6
C22 51 MMF MICA	PA4325-2	N-14	L1 AM ANT LOADING COIL	AA6686-2	P-3	R22 1000	"	BR125-102
C23 02 MFD MOLDED PAPER	HK35G-202	O-14	L2A FM ANT COIL (PRI)	AA6766-1	P-6	R23 39000	(C & R UNIT)	PA4330-7
C24 02 MFD CERAMIC	PA4359-1	Q-14 Q-17	L2B FM ANT COIL (SEC)	AA6767-10	P-6	R24 10 MEG	5W	BR125-106
C25A,B NO 1 IF TRIMMER FM	PA4359-3	P-16 P-17	L3 AM ANT LOOP	AC67006-4	O-3	R25 VOLUME CONTROL		PA4407-2
C26A,B NO 1 IF TRIMMER AM	HK35G-203	O-16	L4 FM R F CHOKE	AA6769-2	Q-9			
C27 02 MFD CERAMIC	PA4330-4	O-17	L5 BC R F COIL	AA6756-7	P-10			
C28 02 MFD (C & R UNIT)	PA4330-5	N-18	L6 FM R F COIL	AA6767-5	P-12	R27 650 OHMS	10W	PA4200-4
C29 02 MFD (C & R UNIT)	PA4330-6	O-19	L7 BC OSC COIL	AA6759-4	N-10	R28 200	5W	BR125-201
C30 02 MFD (C & R UNIT)	HK35G-203	N-20	L8 FM OSC COIL	AA6767-4	N-12	R29 470	5W	BR125-471
C31 02 MFD CERAMIC	PA4359-1	O-20,Q 21	L9 FM CATHODE CHOKE	AA6798-1	L-10	R30 15000	5W	BR125-153
C32A,B NO 2 IF TRIMMER FM	PA4359-3	P-20,P 21	L10 NO 1 IF COIL*	AA6803-2	Q-17	R32 220,000	5W	BR125-224
C33A,B NO 2 IF TRIMMER AM	PA4329-3	O-20,Q 21	L11 NO 2 IF COIL*	AA6803-3	Q-21	R33 56000	5W	BR125-562
C34 100 MMF (C & R UNIT)	PA4329-8	P-22	L12 TUNED CHOKE ASSEM *	AA6785-3	Q-25	R34 1000	5W	PA4400-7
C35 100 MMF (C & R UNIT)	MC60G-101	P-24	L13 RATIO DET COIL*	AA6805-3	Q-29	R35 470 OHMS	2W	DR125-471
C36 001 MFD (C & R UNIT)	PA4330-6	R-23						
C37 02 MFD (C & R UNIT)	MC60G-130	P-25						
C38 100 MMF MICA	MC65F-200	N-25						
C39 20 MMF MICA	HK35G-203	P-28						
C40 02 MFD CERAMIC	PA4330-6	O-28						
C41 02 MFD (C & R UNIT)	HK35G-203	O-27						
C42 02 MFD CERAMIC	PC40GR-103	O-30						
C43 01 MFD (C & R UNIT)	PA4330-7	N-27						
C44 002 MFD (C & R UNIT)	HK35G-203	J-26						
C45 02 MFD CERAMIC	HK35G-203	N-29						
C46 02 MFD CERAMIC	MC60E-151							
C47 150 MMF MICA								

WITHINGTON CO

FREQUENCY A.M. 456 Kc
F.M. 10.7 Mc
S OF ALL SOCKET CONNECTIONS

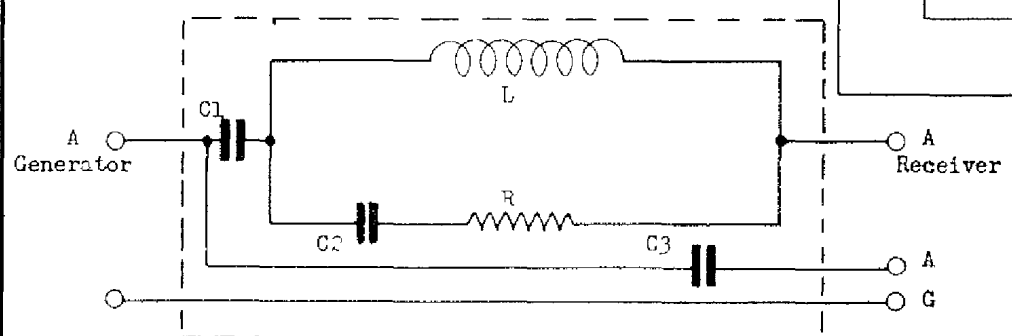
MODELS 1035, 1035A,
1036, 1036A, 1037,
1037A, CHASSIS 9L8



IED AS ASSEMBLIES COMPLETE ONLY

PART NO	LOCATION
SW BR125-222	P-3
SW BR125-105	M-7
SW BR125-680	P-8
SW BR125-333	N-9
SW BR125-470	O-10
SW BR125-105	O-11
SW BR125-223	P-14
SW DR125-223	O-15
SW BR125-105	N-14
SW BR125-102	O-16
UNIT) PA4330-4	O-17
UNIT) PA4330-5	N-18
UNIT) PA4330-6	O-19
SW BR125-102	N-20
UNIT) PA4329-3	O-21
UNIT) PA4330-8	P-22
SW BR125-104	K-21
SW BR125-334	J-21
UNIT) PA4330-8	P-24
SW BR125-153	R-25
UNIT) PA4330-6	P-26
SW BR125-102	O-26
UNIT) PA4330-7	O-29
SW BR125-106	M-27
SW PA4407-2	L-26
2W PA4200-4	I-28
SW BR125-201	O-29
SW BR125-471	O-32
SW BR125-153	O-31
SW BR125-253	O-32
SW BR125-563	N-30
SWITCH PA4400-7	M-32
2W DR125-471	L-32
ISEM AA6766-3	Q-17
ISEM AA6766-4	Q-20
ISEM AA6720-5	Q-25
ASSEM AA6684-1	Q-29
AB44056-2	J-32
AB44010-2	

DUMMY ANTENNA



- C1 - 200 p.f. Condenser 400 V.D.C
- C2 - 400 mmf. Condenser 200 V.D.C
- C3 - .02 mmf Condenser 400 V.D.C
- R - 100 Ohms Resistor 1/4 Watt
- L - Choke Coil
- Case Shield
- Choke Coil Specification
- Tubing - 3/8" Diameter Bakelite
- Wire - No. 38 Enameled
- Turns - 59 closely wound (Impregnated)

NOTE When using this dummy antenna the generator output impedance should be 10 ohms or lower.

TO FIL OF ALL TUBES BUT 5Y3GT

5Y3GT RECT

POWER CORD PA 4000