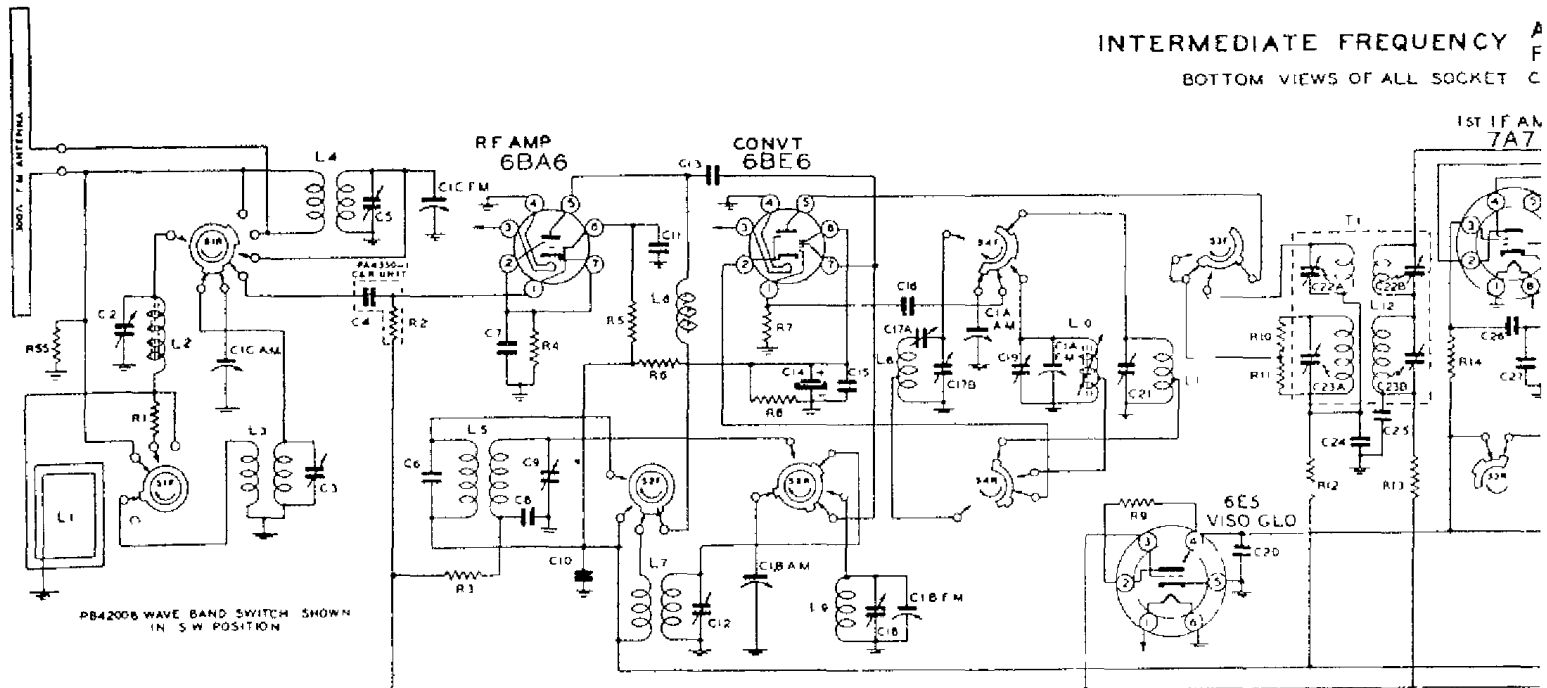


THE SPARKS-WITHIN

INTERMEDIATE FREQUENCY BOTTOM VIEWS OF ALL SOCKET



P 4801
AC SWITCH

PA 000
POWER
CORD

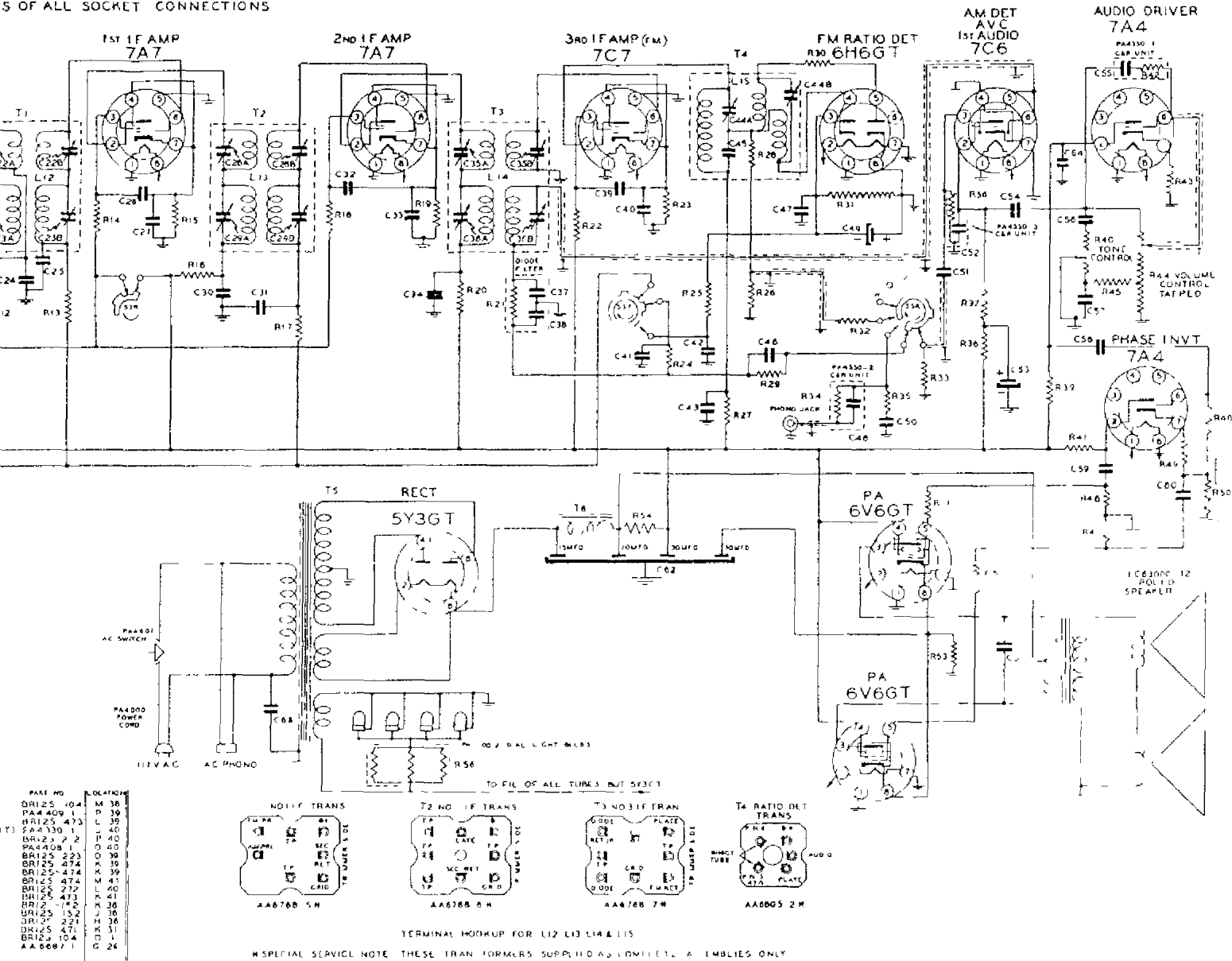
117V

DESCRIPTION	PART NO	LOCATION	DESCRIPTION	PART NO	LOCATION	DESCRIPTION	PART NO	LOCATION
C1A 100MMF CAM 3 GANG CONDENSER	PC85000	Q 1	C54 05 MFD 400V TUBULAR	PC40HL 503	P 37	R39 100,000 OHMS	BR125-104	M 38
C1A FM BFM CFM			C55 100MMF (CAR UNIT)	PA4330 1	S 40	R40 47,000 OHMS	PA4409 1	P 39
C2 BC ANT TRIMMER	PA4376 2	Q 2	C56 005 MFD 200V TUBULAR	PC40HK-502	P 39	R41 47,000 OHMS	BR125-473	L 39
C3 SW ANT TRIMMER	PA4330 1	Q 3	C57 01 MFD 200V	PC40HL 103	M 39	R42 100,000 OHMS	PA4330 1	S 40
C4 100MMF COND (CAR UNIT)	PC4330 1	Q 4	C58 05 MFD 400V	PC40HL 503	N 39	R43 2700 OHMS	BR125 272	P 40
C5 FM ANT TRIMMER	PA4365 1	R 6	C59 05 MFD 400V	PC40H 103	K 39	R44 47,000 OHMS	PA4408	Q 40
C6 51MMF CERAMIC	CC30H-510K	Q 6	C60 05 MFD 400V	PC40HL-503	H 40	R45 22,000 OHMS	BR125 223	Q 39
C7 01 MFD 100V MOLDED PAPER	PA4325 1	N 6	C61 006 MFD 1000V	PC40HN-602	H 37	R46 470,000 OHMS	BR125-474	K 39
C8 01 MFD 100V	PA4325 1	N 6	C62 ELECTRO COND 30 20 (5MFD 450V)	PA4307 1	J 263032	R47 470,000 OHMS	BR125 474	M 4
C9 BC RF TRIMMER	PA4376 2	Q 6	C63 05 MFD 600V PAPER MOLDED	PC45GM 303	H 24	R48 470,000 OHMS	BR125 272	L 40
C10 1000 MMF CERAMIC	PA4326 0	M 9	C64 150 MMF MICA	MC60F 151	Q 38	R49 2700 OHMS	BR125 473	K 41
C11 1000 MMF	PA4326 0	M 9				R50 47,000 OHMS	BR125 152	J 36
C12 SW RF TRIMMER	PA4376 2	S 10				R51 1500 OHMS	BR125 152	J 36
C13 51MMF CERAMIC	PA4326 0	P 12				R52 1500 OHMS	BR125 152	J 36
C14 4 MFD 250V ELECTRO COND	PA4301 0	P 12				R53 220 OHMS	BR125 471	K 31
C15 1000MMF CERAMIC	PA4326 0	P 12				R54 470 OHMS	BR125 104	Q 1
C16 51MMF	CC30H 510K	Q 13				R55 100,000 OHMS	AA6887 1	G 26
C17 BC OSC PAD C17B BC OSC TRIM	AR43500 38	Q 13						
C18 FM RF TRIMMER	PA4385 1	M 13						
C19 FM OSC	PA4385 1	P 15						
C20 05 MFD 400V TUBULAR	PC40HL-503	M 16						
C21 SW OSC	PA4376 2	P 16						
C22 AB NO 1 IF TRIMMER FM W	PA4359 3	Q 19 20						
C23 AB NO 2 IF TRIMMER FM W	PA4359 3	Q 19 20						
C24 01 MFD 400V PAPER MOLDED	PC45GL-103	Q 19						
C25 01 MFD 200V	PC45GL-103	Q 19						
C26 01 MFD 100V	PA4325 4	Q 21						
C27 01 MFD 200V	PC45GL-103	P 21						
C28 AB NO 2 IF TRIMMER FM W	PA4359 3	Q 23 24						
C29 AB NO 2 IF TRIMMER FM W	PA4359 3	Q 23 24						
C30 05 MFD 400V TUBULAR	PC40HL-503	P 23						
C31 01 MFD 200V PAPER MOLDED	PC45GL-103	Q 23						
C32 01 MFD 100V	PA4325 4	Q 23						
C33 01 MFD 200V	PC45GL-103	Q 23						
C34 05 MFD 400V TUBULAR	PC40HL-503	P 27						
C35 AB NO 3 IF TRIMMER FM W	PA4359 3	Q 27 28						
C36 AB NO 3 IF TRIMMER FM W	PA4359 3	Q 27 28						
C37 100MMF	PC4329 1	N 28						
C38 100MMF	PC4329 1	N 28						
C39 01 MFD 200V PAPER MOLDED	PC45GL-103	P 30						
C40 01 MFD 200V	PC40HL-104	N 30						
C41 1 MFD 200V TUBULAR	PA4325 2	N 31						
C42 001 MFD 200V PAPER MOLDED	PC40HL 503	N 31						
C43 05 MFD 400V TUBULAR	PC4359 1	R 32-33						
C44 AB RATIO DET TRIMMER A	MC60F-510	Q 32						
C45 51MMF MICA	ME605-131	N 33						
C46 220MMF CERAMIC	PA4326 0	N 33						
C47 1000MMF (CAR UNIT)	PA4330 2	M 34						
C48 3 MFD 50V ELECTRO COND	PA4308 1	P 34						
C49 01 MFD 200V TUBULAR	PC40HL-103	L 35						
C50 01 MFD 100V PAPER MOLDED	PA4325 1	Q 36						
C51 01 MFD 100V PAPER MOLDED	PA4330 3	P 36						
C52 100MMF (CAR UNIT)	PA4330 3	P 36						
C53 4 MFD 400V ELECTRO COND	PA4303 1	M 37						

KS-WITHINGTON CO

MODELS 1000, 1001,
1003, 1020, 1021,
1023, CHASSIS 12L7

FREQUENCY AM 456 Kc
FM 10.7 Mc
5 OF ALL SOCKET CONNECTIONS



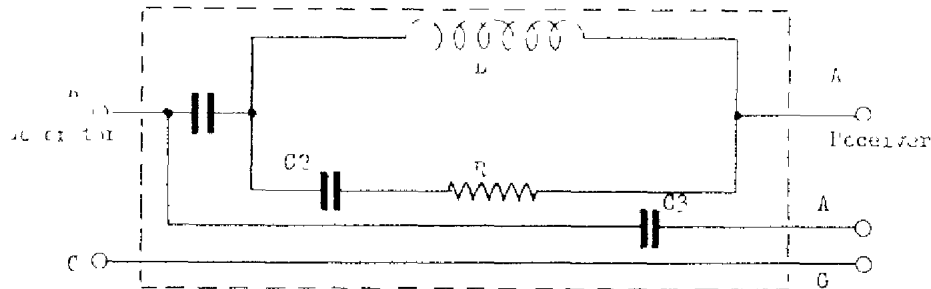
PART NO.	LOCATION
BR125 104	M 38
PA4400 1	P 39
BR125 473	L 39
PA4130 1	L 40
BR125 2 2	L 40
PA4400 1	L 40
BR125 223	X 30
BR125 474	X 39
BR125 474	X 41
BR125 272	X 40
BR125 473	X 41
BR125 474	X 41
BR125 152	J 36
BR125 221	H 36
BR125 471	X 31
BR125 104	L 1
AA6687 1	C 24

PART NO.	LOCATION
AC6700B 2	1
AA6760 3	3
AA6758 7	4
AA6757 8	5
AA6756 5	10
AA6758 6	10
AA6752 6	11
CA3234	11
AA6747 1	13
AA6770 3	13
AA6693 2	19
AA6803 2	23
AA6803 2	23
AA6805 2	23
AA6805 2	23

PART NO.	LOCATION
AA6760-5	Q-19
AA6758-8	23
AA6756-7	23
AA6805-2	23
AB44011	23
AB47000	23
AB44059	23

SPECIAL SERVICE NOTE THESE TRANSFORMERS SUPPLIED AS COMPLETES, A EMBLIES ONLY

DUMMY ANTENNA



C1-200 mfd. Condenser 400 V.D.C.
C2-400 mfd. Condenser 400 V.D.C.
C3-.02 mfd. Condenser 400 V.D.C.
R-100 ohms Resistor 1/4 Watt
L-Choke Coil
NOTE When using the dummy antenna the receiver output should be 10 ohms or lower.