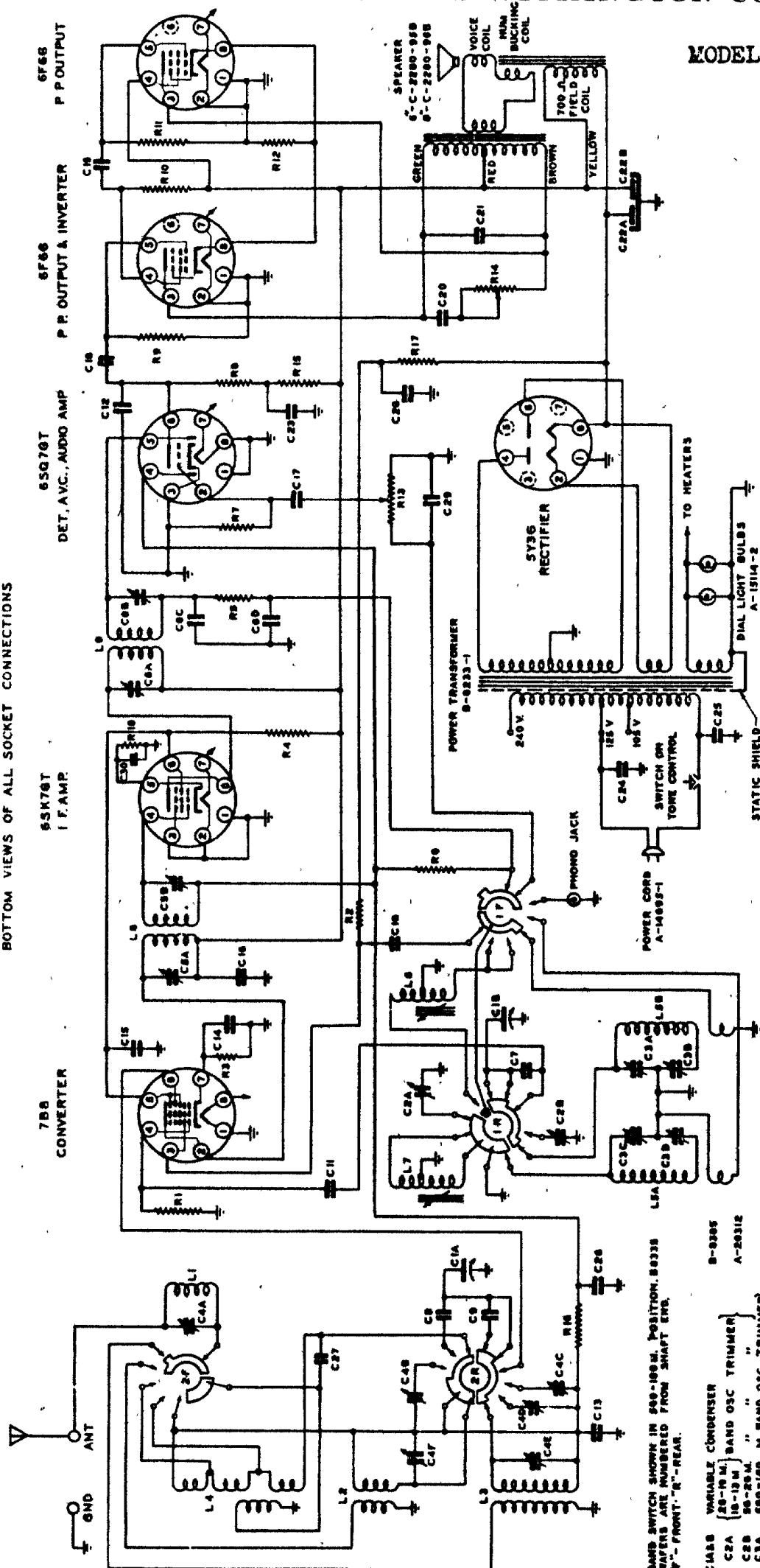


INTERMEDIATE FREQUENCY 450 K.C.
BOTTOM VIEWS OF ALL SOCKET CONNECTIONS



LAB	VARIABLE CONDENSER	RESISTOR	SWITCH	RELAY	VALVE	OTHER
C2A	20-120 M. BAND OSC	TRIMMER				
C2B	20-250 M.	"				
C2C	20-250 M.	"				
C2D	20-100 M. BAND OSC.	TRIMMER				
C2E	20-100 M.	"				
C2F	20-100 M.	"				
C2G	20-100 M.	"				
C2H	20-100 M.	"				
C2I	20-100 M.	"				
C2J	20-100 M.	"				
C2K	20-100 M.	"				
C2L	20-100 M.	"				
C2M	20-100 M.	"				
C2N	20-100 M.	"				
C2O	20-100 M.	"				
C2P	20-100 M.	"				
C2Q	20-100 M.	"				
C2R	20-100 M.	"				
C2S	20-100 M.	"				
C2T	20-100 M.	"				
C2U	20-100 M.	"				
C2V	20-100 M.	"				
C2W	20-100 M.	"				
C2X	20-100 M.	"				
C2Y	20-100 M.	"				
C2Z	20-100 M.	"				
C2A1	20-100 M.	"				
C2A2	20-100 M.	"				
C2A3	20-100 M.	"				
C2A4	20-100 M.	"				
C2A5	20-100 M.	"				
C2A6	20-100 M.	"				
C2A7	20-100 M.	"				
C2A8	20-100 M.	"				
C2A9	20-100 M.	"				
C2A10	20-100 M.	"				
C2A11	20-100 M.	"				
C2A12	20-100 M.	"				
C2A13	20-100 M.	"				
C2A14	20-100 M.	"				
C2A15	20-100 M.	"				
C2A16	20-100 M.	"				
C2A17	20-100 M.	"				
C2A18	20-100 M.	"				
C2A19	20-100 M.	"				
C2A20	20-100 M.	"				
C2A21	20-100 M.	"				
C2A22	20-100 M.	"				
C2A23	20-100 M.	"				
C2A24	20-100 M.	"				
C2A25	20-100 M.	"				
C2A26	20-100 M.	"				
C2A27	20-100 M.	"				
C2A28	20-100 M.	"				
C2A29	20-100 M.	"				
C2A30	20-100 M.	"				
C2A31	20-100 M.	"				
C2A32	20-100 M.	"				
C2A33	20-100 M.	"				
C2A34	20-100 M.	"				
C2A35	20-100 M.	"				
C2A36	20-100 M.	"				
C2A37	20-100 M.	"				
C2A38	20-100 M.	"				
C2A39	20-100 M.	"				
C2A40	20-100 M.	"				
C2A41	20-100 M.	"				
C2A42	20-100 M.	"				
C2A43	20-100 M.	"				
C2A44	20-100 M.	"				
C2A45	20-100 M.	"				
C2A46	20-100 M.	"				
C2A47	20-100 M.	"				

[illegible]

ON 2200-750 M & 560-180 M BANDS, OSC FREQ IS ABOVE SIGNAL FREQ
ON 50-26 M, 20-10 M & 10-13 M " " " BELOW " "