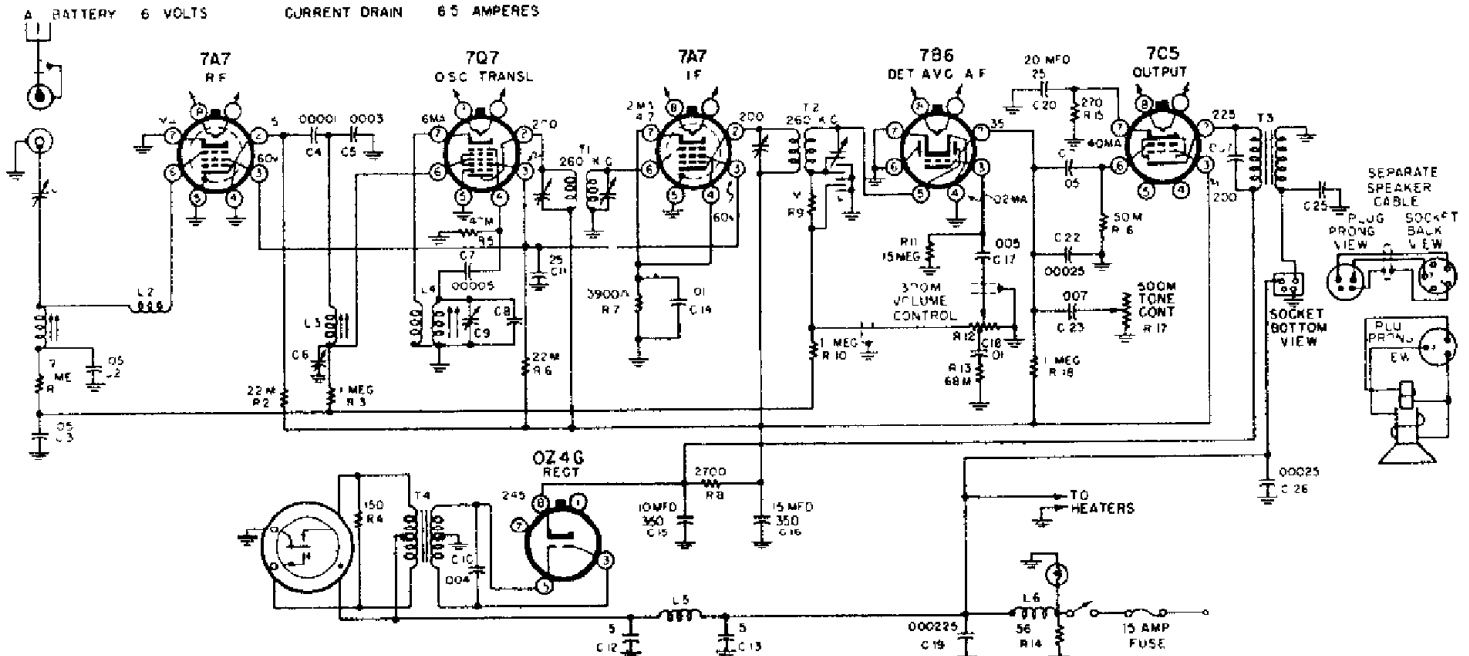


* PART OF T2 ∇ PART OF L1

TUBE SOCKETS ARE VIEWED FROM UNDER SIDE OF CHASSIS. VOLTAGE READINGS SHOWN AT SOCKET PRONGS ARE TO CHASSIS AND ARE TAKEN WITH NO SIGNAL WHERE NO READING IS GIVEN THE VOLTAGE IS ZERO OR TOO LOW TO READ.

A BATTERY 6 VOLTS CURRENT DRAIN 65 AMPERES

SCHEMATIC DIAGRAM 101.666A



* PART OF T2 ∇ PART OF L1

TUBE SOCKETS ARE VIEWED FROM UNDER SIDE OF CHASSIS. VOLTAGE READINGS SHOWN AT SOCKET PRONGS ARE TO CHASSIS AND ARE TAKEN WITH NO SIGNAL WHERE NO READING IS GIVEN THE VOLTAGE IS ZERO OR TOO LOW TO READ.

A BATTERY 6 VOLTS CURRENT DRAIN 65 AMPERES

SCHEMATIC DIAGRAM 101.666-1B