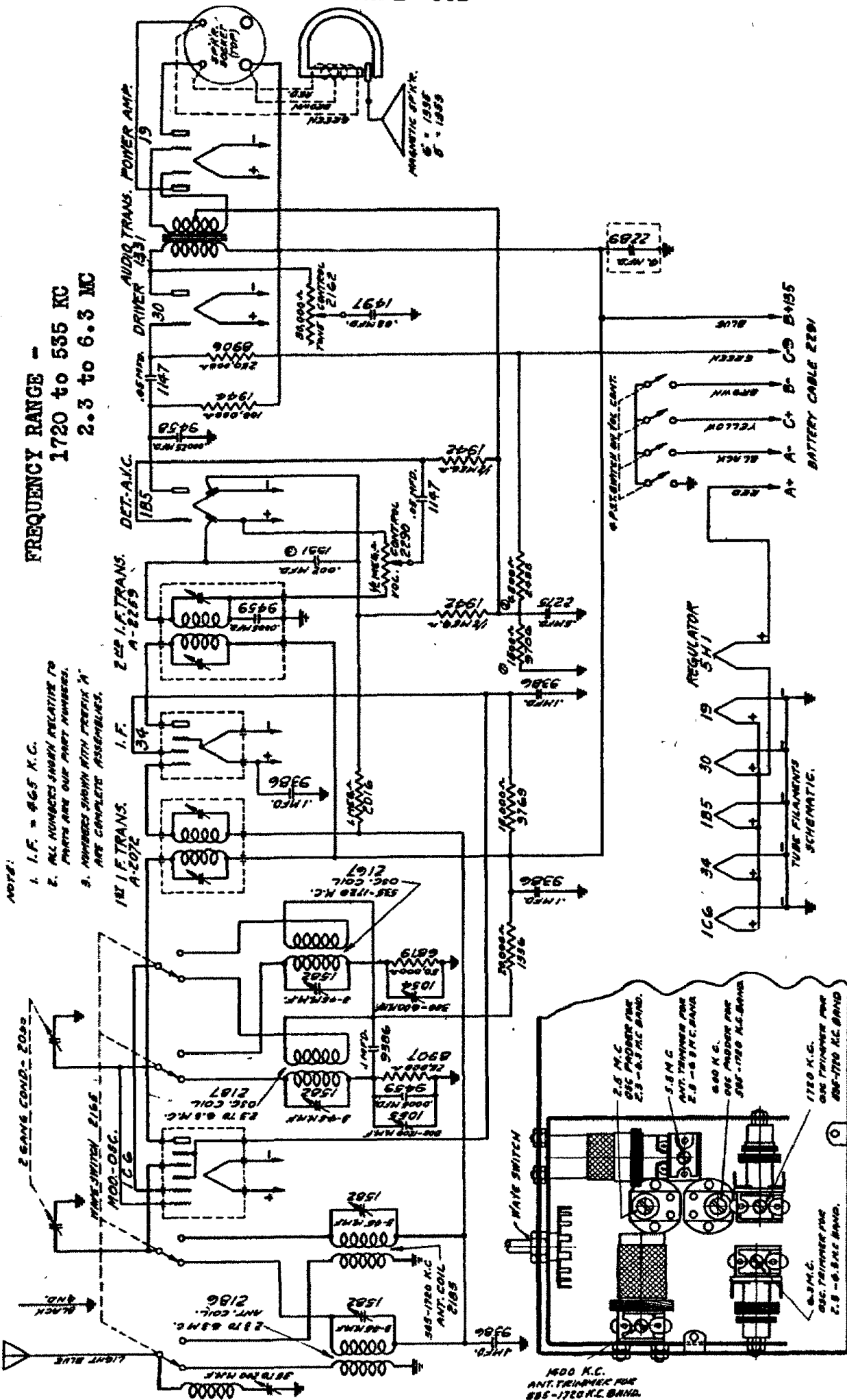


SENTINEL RADIO CORP.

MODEL 38B

FREQUENCY RANGE -
1720 to 535 KC
2.3 to 6.3 MC



CONVENTIONAL ALIGNMENT - see special section

ALIGNMENT - Peak I-F transformer trimmers at 465 KC. After R-F adjustments, peak the wave trap at 465 KC. BROADCAST BAND - Dial and generator at 1720 KC, peak oscillator trimmer. Dial and generator at 1400 KC, adjust antenna trimmer to peak. Dial and generator at 600 KC, pad oscillator circuit to maximum peak. SHORTWAVE BAND - Dial and generator at 6.3 MC, adjust oscillator trimmer to maximum peak. Dial and generator at 5.8 MC, adjust antenna trimmer to maximum peak. The short wave oscillator circuit is then padded at 2.5 MC. While making padding adjustments, rock the variable condenser.