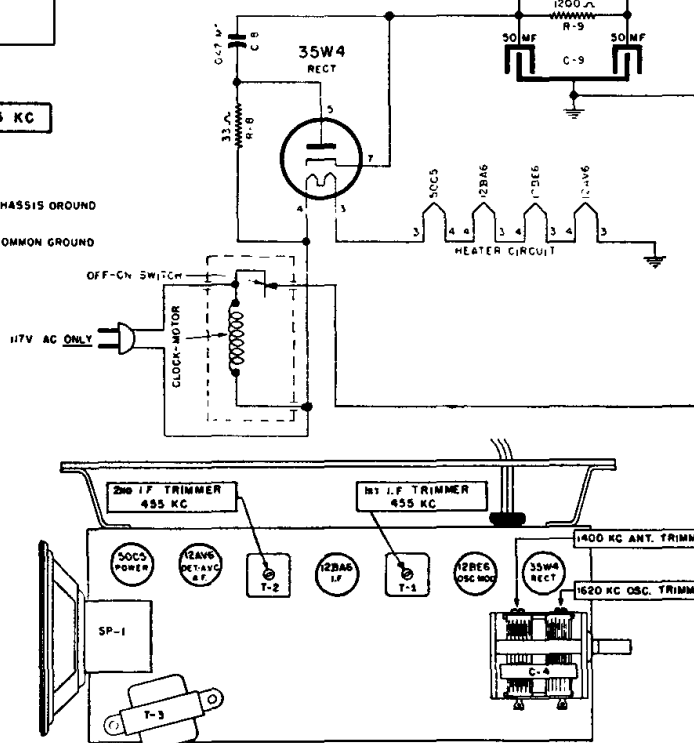
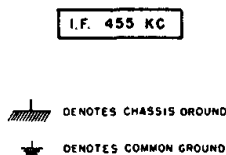
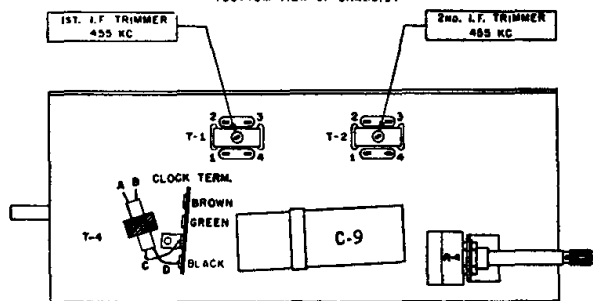
VOLTAGE TABLE  
(BOTTOM VIEW OF CHASSIS)**ALIGNMENT PROCEDURE**

When aligning the 1620 KC OSCILLATOR TRIMMER or the 1400 KC ANTENNA TRIMMER, couple test oscillator to receiver loop by: (1) make loop consisting of five to ten turns of NO. 20 to NO. 30 size wire, wound on a 2" to 3" form; (2) connect this loop across output of test oscillator; (3) place test oscillator loop near radio loop.

| Steps | Set receiver dial to:                              | TEST OSCILLATOR                      |   |  | Refer to parts layout diagram for location of trimmers mentioned below:  |
|-------|--|--------------------------------------|---|--|--|
|       |  | Adjust test oscillator frequency to: | Use dummy antenna in series with output of test oscillator consisting of: | Attach output of test oscillator to:   |  |
| 1     | Any point where no interfering signal is received. | 455 K.C.                             | .02 MFD. condenser  | High side to antenna stator plates of tuning condenser. Low side to common negative. | Adjust each of the second I.F. transformer trimmers for maximum output—then adjust each of the first I.F. trimmers for maximum output. |
| 2     | Exactly 1620 K.C.                                  | Exactly 1620 K.C.                    | See paragraph above.  | See paragraph above.   | Adjust 1620 K.C. oscillator trimmer for maximum output.  |
| 3     | Approx. 1400 K.C.                                  | Approx. 1400 K.C.                    | See paragraph above.  | See paragraph above.   | Adjust 1400 K.C. antenna trimmer for maximum output.   |