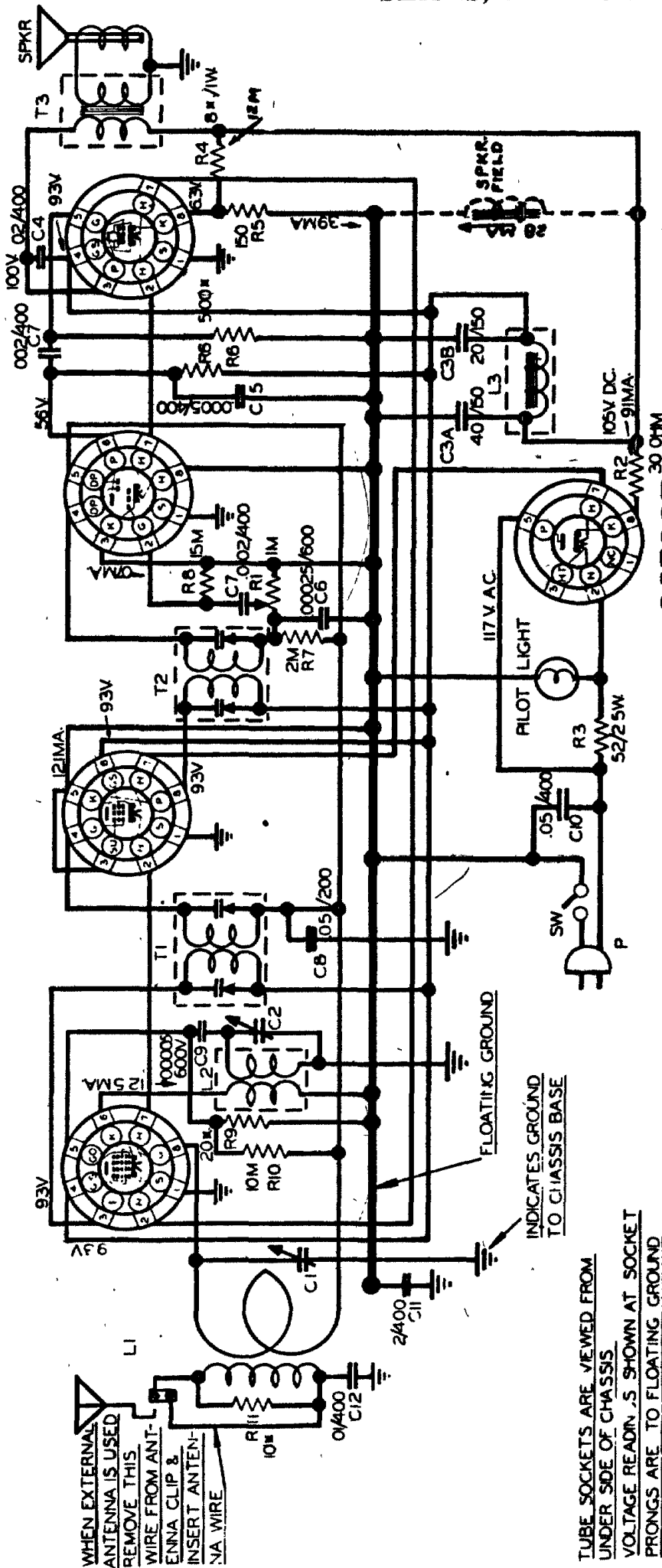


35L6GT

12SQ7GT

12SK7GT

12SA7GT



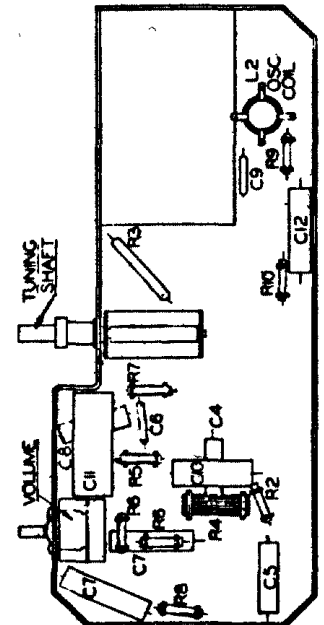
IF PEAK 455 KC

132.813

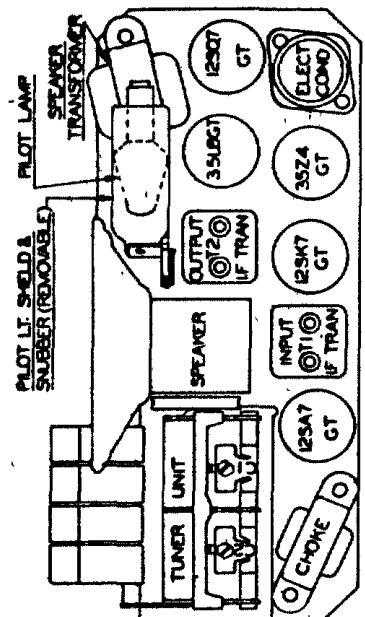
JULY 7, 1941

TUBE SOCKETS ARE VIEWED FROM UNDER SIDE OF CHASSIS  
VOLTAGE READINGS SHOWN AT SOCKET PRONGS ARE TO FLOATING GROUND AND ARE TAKEN WITH NO SIGNAL A.C. LINE VOLTAGE AT 117 VOLTS. WHERE NO READING IS GIVEN, THE VOLTAGE IS ZERO OR TOO LOW TO READ.

SPEAKER FIELD (dotted position)  
in Chassis 132.813-1, -1A, -1B only.  
R4 changed to 12,000 ohms.  
Aug. 13, 1941



LOCATION OF PARTS UNDER CHASSIS 132.813



LOCATION OF PARTS ON TOP OF CHASSIS