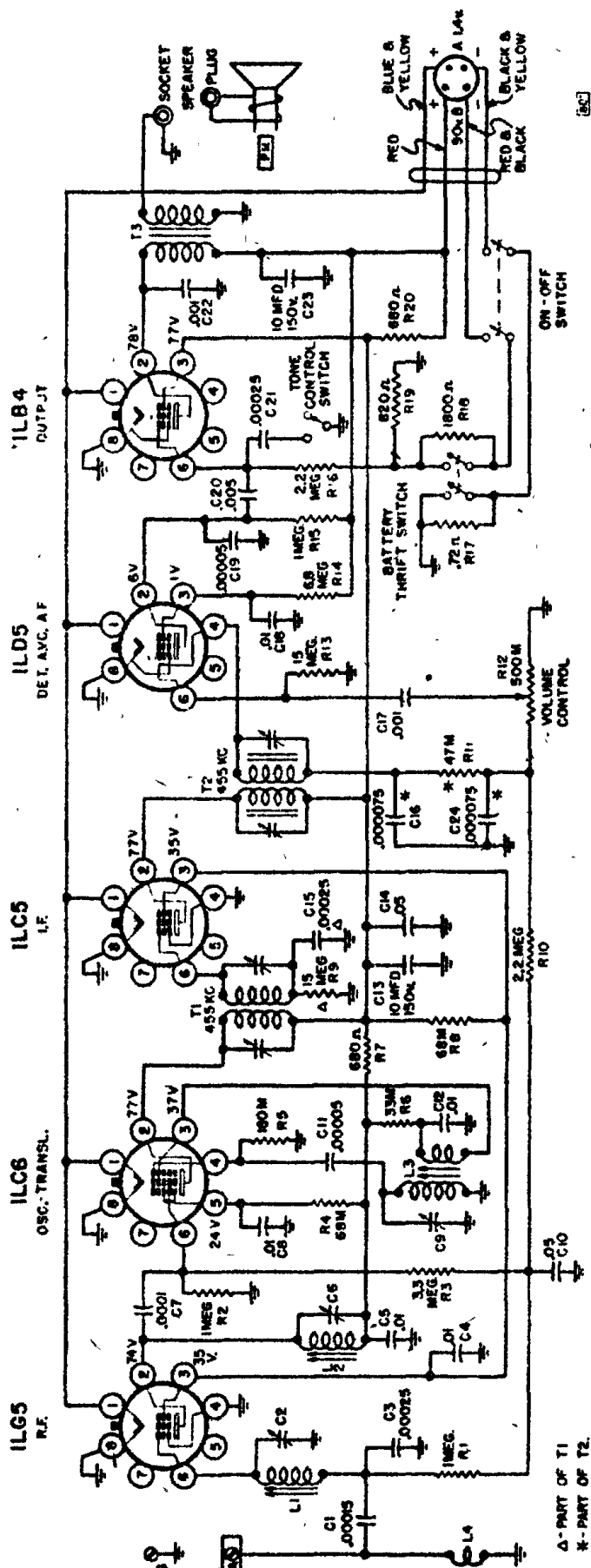


SEARS ROEBUCK & CO.

MODEL 6220, Ch. 101, 801



TUBE SOCKETS ARE VIEWED FROM UNDER SIDE OF CHASSIS.
VOLTAGE READINGS SHOWN AT SOCKET PRONGS ARE TO CHASSIS,
AND ARE TAKEN WITH NO SIGNAL WHERE NO READING IS
GIVEN, THE VOLTAGE IS ZERO OR TOO LOW TO READ.

Output meter connections Across load speaker voice coil
Output meter reading to indicate 50 milliwatts (Standard Output).
Generator ground lead connection Receiver chassis
Dummy antenna value to be in series with generator output See chart below
Connection of generator output lead 30%, 400 cycles
Generator modulation Fully on
Position of Volume Control HI
Position of Tone Control Last mark to the left of 540 Kc calibration mark.
Position of pointer with tuner fully closed.

POSITION OF TUNER	GENERATOR FREQUENCY	DUMMY ANTENNA	GENERATOR CONNECTION	ADJUSTMENTS (IN ORDER SHOWN)	FUNCTION
Closed	455 Kc.	.1 mfd.	1LC6 Transl. Grid	T2, T1	I.F.
1725	1725 Kc.	.000075 mfd.	Ant. Terminal	C9	Oscillator
1725	1725 Kc.	.000075 mfd.	Ant. Terminal	C2, C6	Ant., Transl.
1500	1500 Kc.	.000075 mfd.	Ant. Terminal	L3	Oscillator Core
1500	1500 Kc.	.000075 mfd.	Ant. Terminal	L1, L2	Ant., Transl. Cores
1725	1725 Kc.	.000075 mfd.	Ant. Terminal	C9, C2, C6	Oscillator, Ant., & Transl. Recheck

