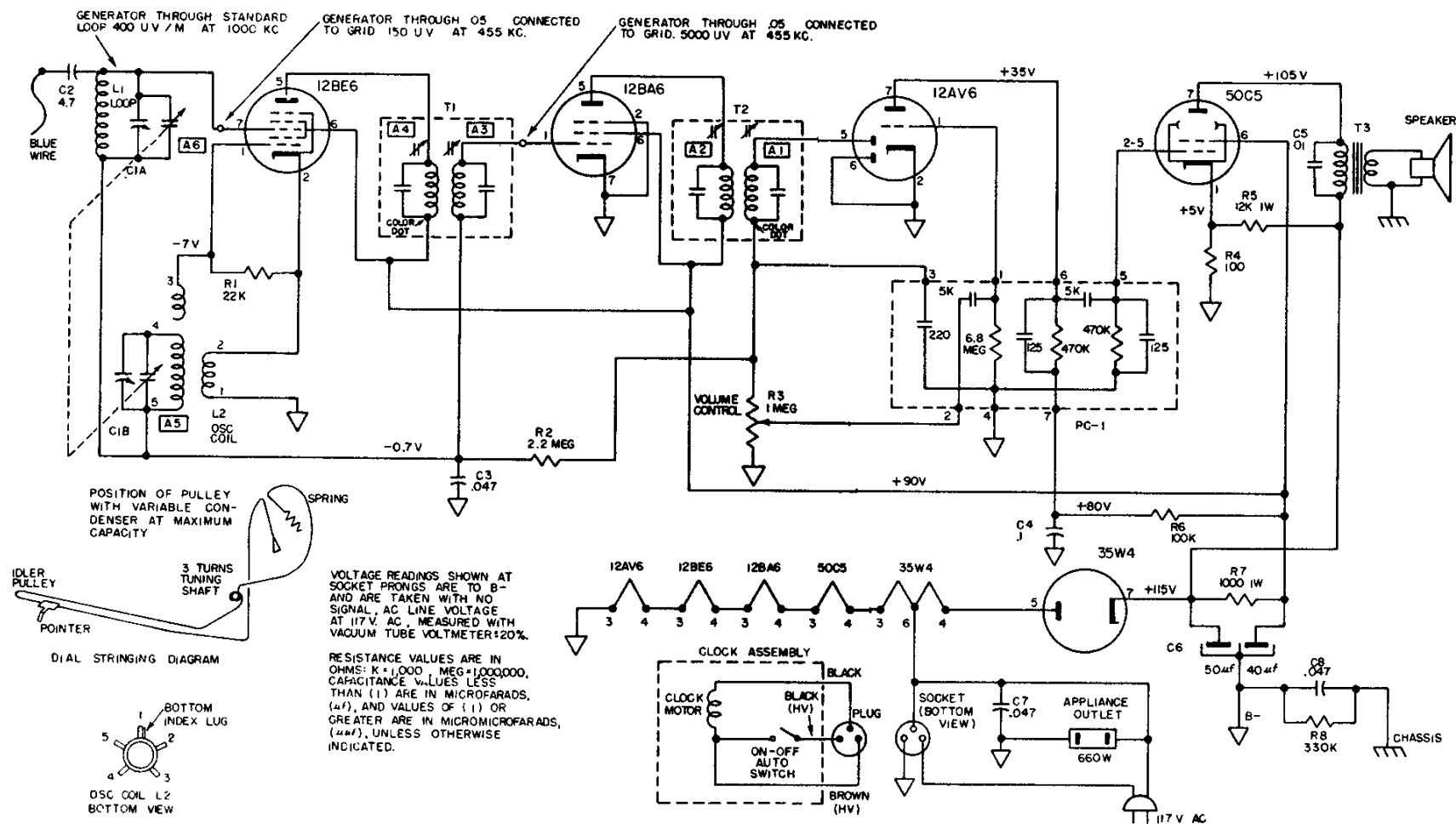


Sears, Roebuck & Co. Chassis 132.09000, Catalog Nos. 6020 and 6021



Tuning range 540 Kc. to 1650 Kc. Intermediate frequency - 455 Kc. I-f and r-f measurements made at .5 watt output - approximately 1.26 volts on a rectifier type voltmeter connected across the voice coil. Approximate inputs for .5 watt output; I-f 300 uv. R-f with standard loop; at 600 Kc 800/m; at 1000 Kc 600 uv/m; at 1400 Kc 500 uv / m. For I-f alignment use .05 mfd. as Dummy from Generator hot lead to mixer grid. Connect low side of generator to floating ground. For R-f alignment use radiating loop.

Position of Variable	Generator Frequency	Adj. Trimmers (in order shown)	Trimmer Function
Open	455 Kc	A1, A2, A3, A4	I. F.
1400 Kc	1400 Kc	A5, A6	Osc. Ant.
600 Kc	600 Kc	Check Point	

