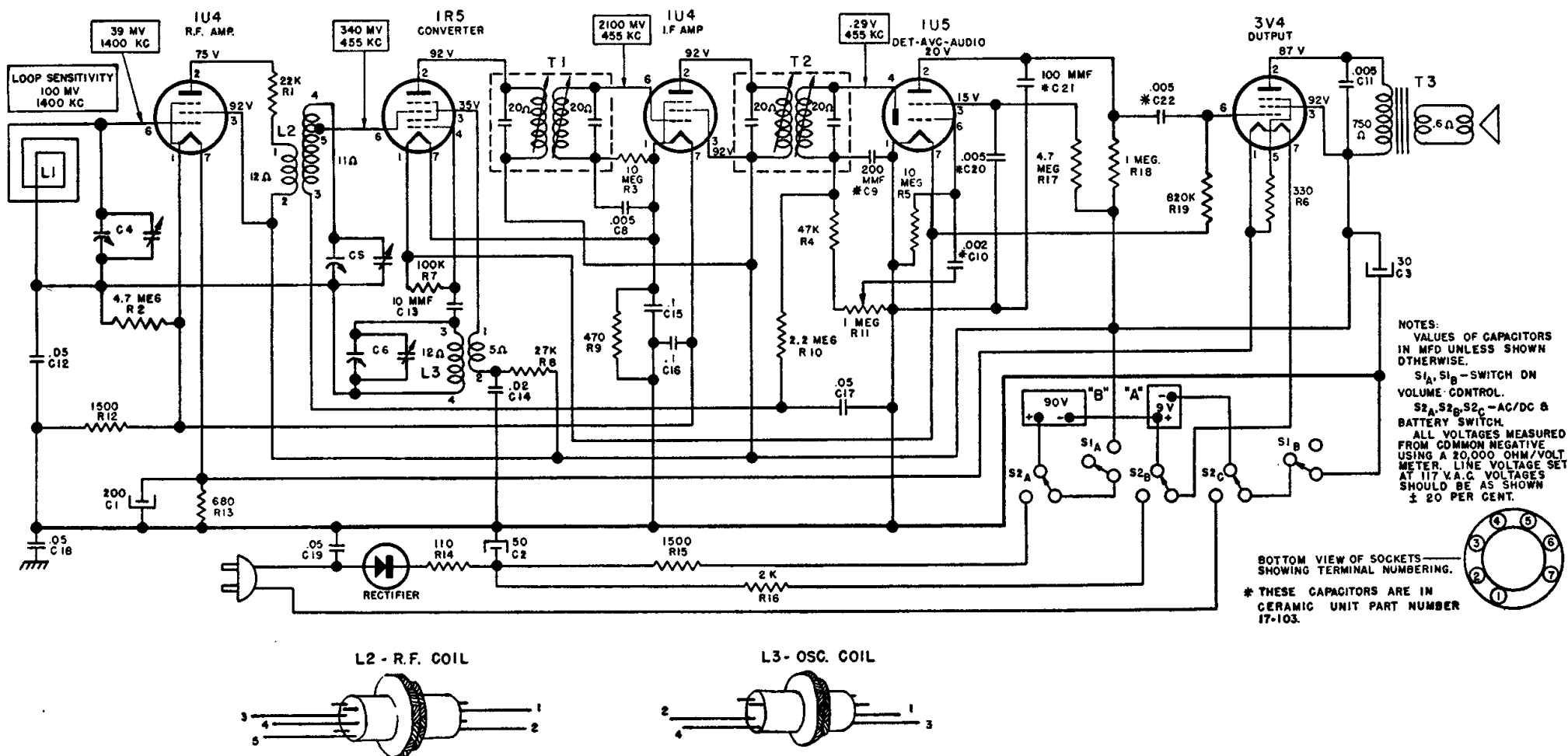


Silvertone

Set Catalog No. 225
Chassis 528.171 and 528.171-1



SCHEMATIC DIAGRAM FOR SILVERTONE CHASSIS 528.171-1
5 TUBE BATTERY-AC-DC SUPERHETERODYNE PORTABLE RECEIVER
CATALOG No. 225

Chassis 528.171-1 is the same as 528.171 except for the Battery/AC/DC changeover system. The hand-operated switch is replaced by a type which is operated by plugging the power cord into a chassis socket. The socket is near the back edge of the chassis. There is a slot for only one prong of the power cord plug; the other prong hangs over the back apron. The detachable power cord and the socket for it on the chassis are replaced by a conventional power cord.