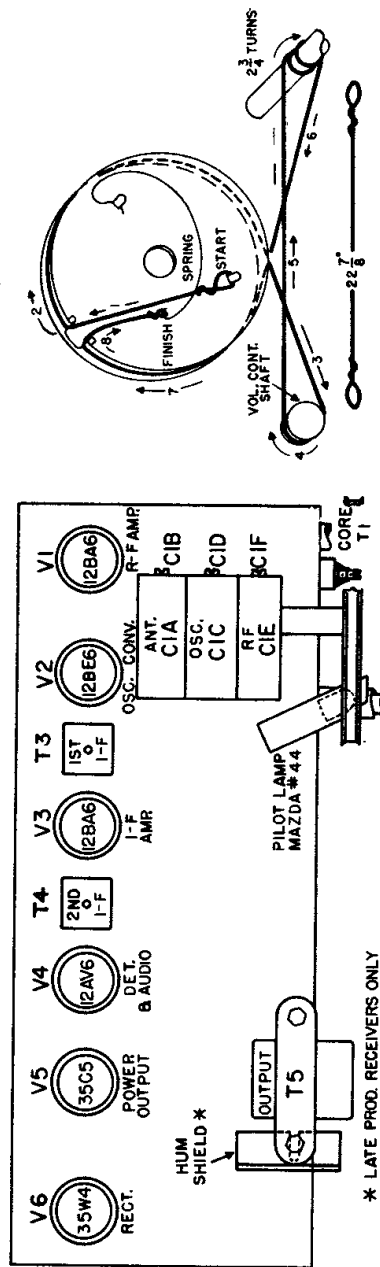


MODEL 590
(540-1600 KC, 455 KC I-F)



Step	Connect Test Oscillator To	Test Oscillator Setting	Receiver Tuning	Adjust for Maximum Output
1	12BA6, V3 grid (pin 1) in series with .05 mf.	455 KC	Minimum capacity	Cores of 2nd i-f transformer T4
2	12BE6, V2 grid (pin 7) in series with .05 mf.			Cores of 1st i-f transformer, T3
3				Recheck adjust- ment of T4 and T3
4		1620 KC	Minimum capacity	C1D, oscillator trimmer
5		1500 KC	For maxi- mum	C1F, r-f trimmer
6	Inductively coupled to radio loop, L1		For maxi- mum.	C1B, antenna trimmer
7		Approxi- mately 600 KC	Rock-in with core of T1	Core of r-f trans- former, T1. Rock-in with re- ceiver tuning.
8	Repeat steps 4, 5, 6 and 7.			



*** LATE PROD. RECEIVERS ONLY**