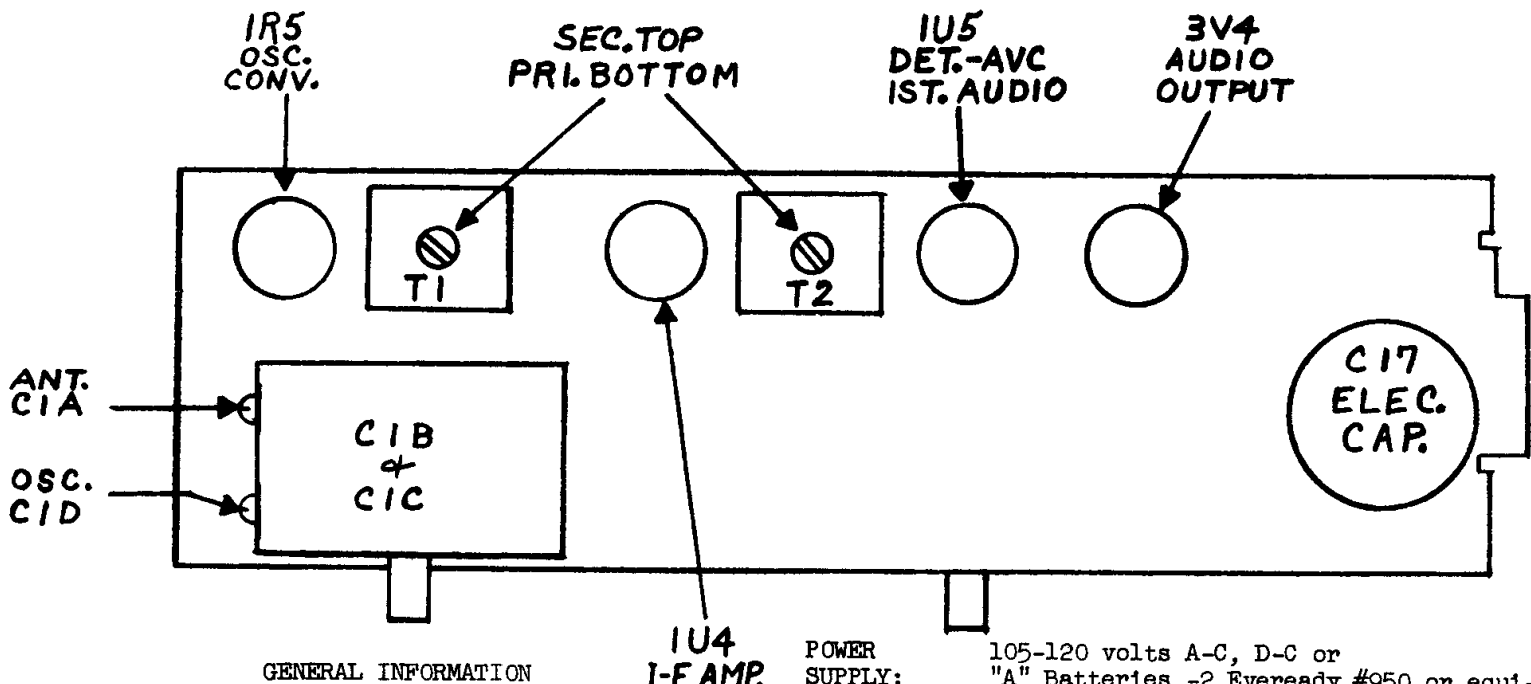
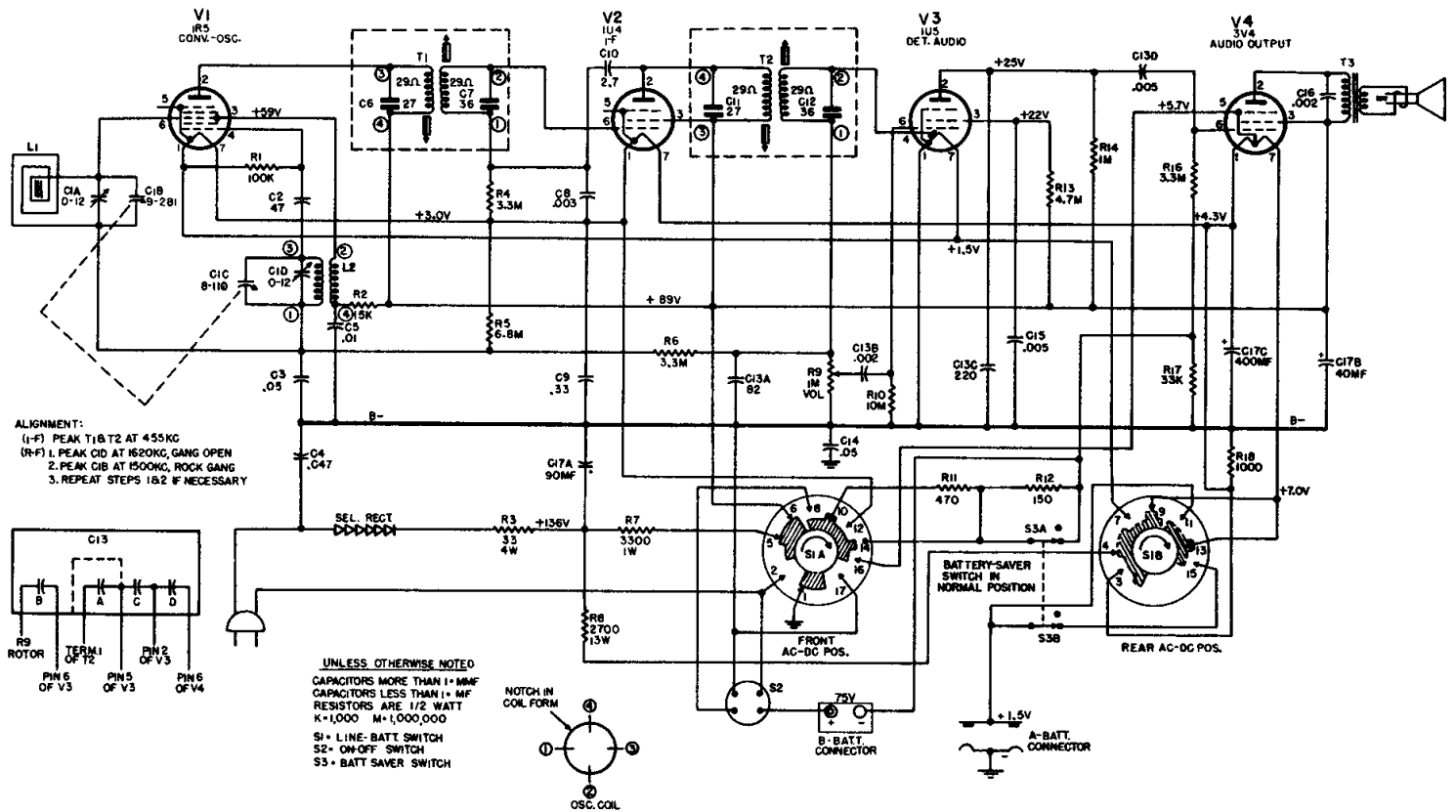


GENERAL ELECTRIC

MODELS 645, 646, 647 and 648 PORTABLE RADIO RECEIVERS



The Models 645, 646, 647 and 648 are four-tube superhetrodyne three-way portable radio receivers. These receivers operate on AC, DC or batteries and incorporate a battery "saver" switch, and the use of a ferrite iron-core antenna.

COILS AND TRANSFORMERS

N-RLC-134	L2	COIL -Oscillator
N-RLL-061	L1	ANTENNA ASSEMBLY
RTL-152	T1,2	TRANSFORMER -I-F
N-RT0-171	T3	TRANSFORMER -Output

POWER SUPPLY:

105-120 volts A-C, D-C or
 "A" Batteries -2 Eveready #950 or equivalent.
 "B" Battery -1 Eveready #467 or equivalent.

AUDIO POWER OUTPUT:

80 milliwatts

LOUDSPEAKER: Size 4 inches
 Type Alnico PM
 Voice Coil Impedance
 @ 400 cycles 3.2 ohms

OPERATING FREQUENCIES: Tuning Range 540 to 1600 KC
 I-F Amplifier 455 KC