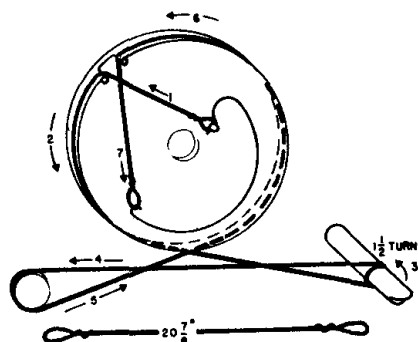


ALIGNMENT CHART

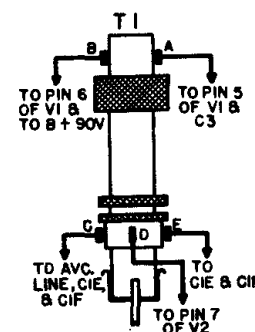
STEP	CONNECT TEST OSCIL-LATOR TO	TEST OSCIL-LATOR SETTING	RECEIVER TUNING	ADJUST FOR MAXIMUM OUTPUT
1	12BA6, V3 grid (pin 1) in series with .05 mf.			Cores of 2nd i-f trans. T4
2	12BE6, V2 grid (pin 7) in series with .05 mf.	455 KC	Minimum capacity	Cores of 1st i-f transformer T3
3				Recheck adjustment of T4 and T3
4	Inductively coupled to radio loop L1	1620 KC	Minimum capacity	C1D, oscil-lator trimmer
5		1500 KC	For maximum	C1F, r-f trimmer
6				C1B, antenna trimmer
7		Approximately 600 KC	For maximum Rock in with core of T1	Core of r-f transformer T1. Rock in with receiver tuning
8	Repeat steps 4, 5, 6 and 7.			

**MODEL
480**

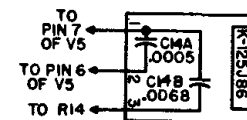
UNLESS OTHERWISE NOTED
VOLTAGES MEASURED WITH 20,000 OHMS PER VOLT METER AT 117V. LINE-NO SIGNAL
RESISTORS IN OHMS - K=1,000, M = 1,000,000
CAPACITORS (LESS THAN ONE - MF MORE THAN ONE - MMF)
RESISTORS ARE 1/2 WATT



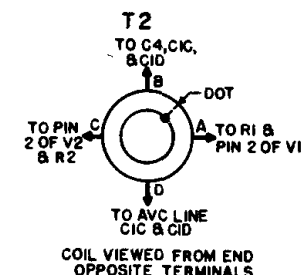
Dial Cord Stringing



R-F Coil Wiring



C14—Wiring



Osc. Coil Wiring

**GENERAL
ELECTRIC**