

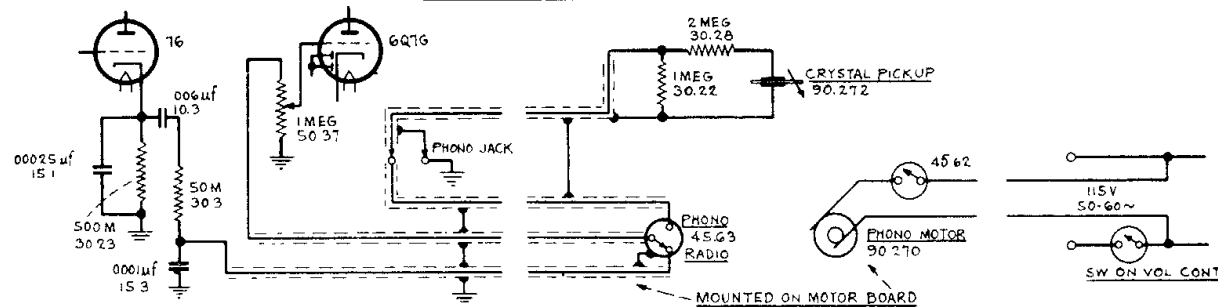
BAND SWITCH POSITIONS
① SHORT WAVE
② BROADCAST
③ AUTOMATIC (B.C. ONLY)

⊥ = CHASSIS
M = THOUSAND OHMS
⊥ = SPEAKER PLUG & SOCKET
No 1 PRONG OF OCTAL SOCKETS GROUNDED

I.F. Peak = 456 Kc.

FADA RADIO & ELECTRIC CO.	
LONG ISLAND CITY, N.Y.	
MODELS 366 & 366PT	
DRAWN BY	DATE
MM	10-23-37
CHECKED BY	APPROVED BY
11/12/37	11/12/37

Model 366PT Phono Combination



Ant. Coil 35.48 A-D = .02M B-D = .66M C-D = .20M	Osc. Coil 35.78 A-C = .02M B-D = .33M E-F = 5.15M
1ST I.F. 35.95 PRI. BLUE-RED = 23M SEC. GREEN-BROWN = 23M EXP. WNDG. YELLOW-BROWN = .75M	2ND I.F. 35.77 PRI. BLUE-RED = 22M SEC. GREEN-BLACK = 22M

NOTE ③ ON EARLY MODELS I.F. PART NO 35.89 IS USED IN PLACE OF 35.95

NOTE ① ON EARLY MODELS, PART NO 25.71 IS USED IN PLACE OF PART NO 25.86
NOTE ② ON EARLY MODELS 10M RESISTOR - PART NO 30.31 IS USED IN PLACE OF 35.67 & R.F. CHOKER 35.67 IS USED IN PLACE OF 100M - 30.24