

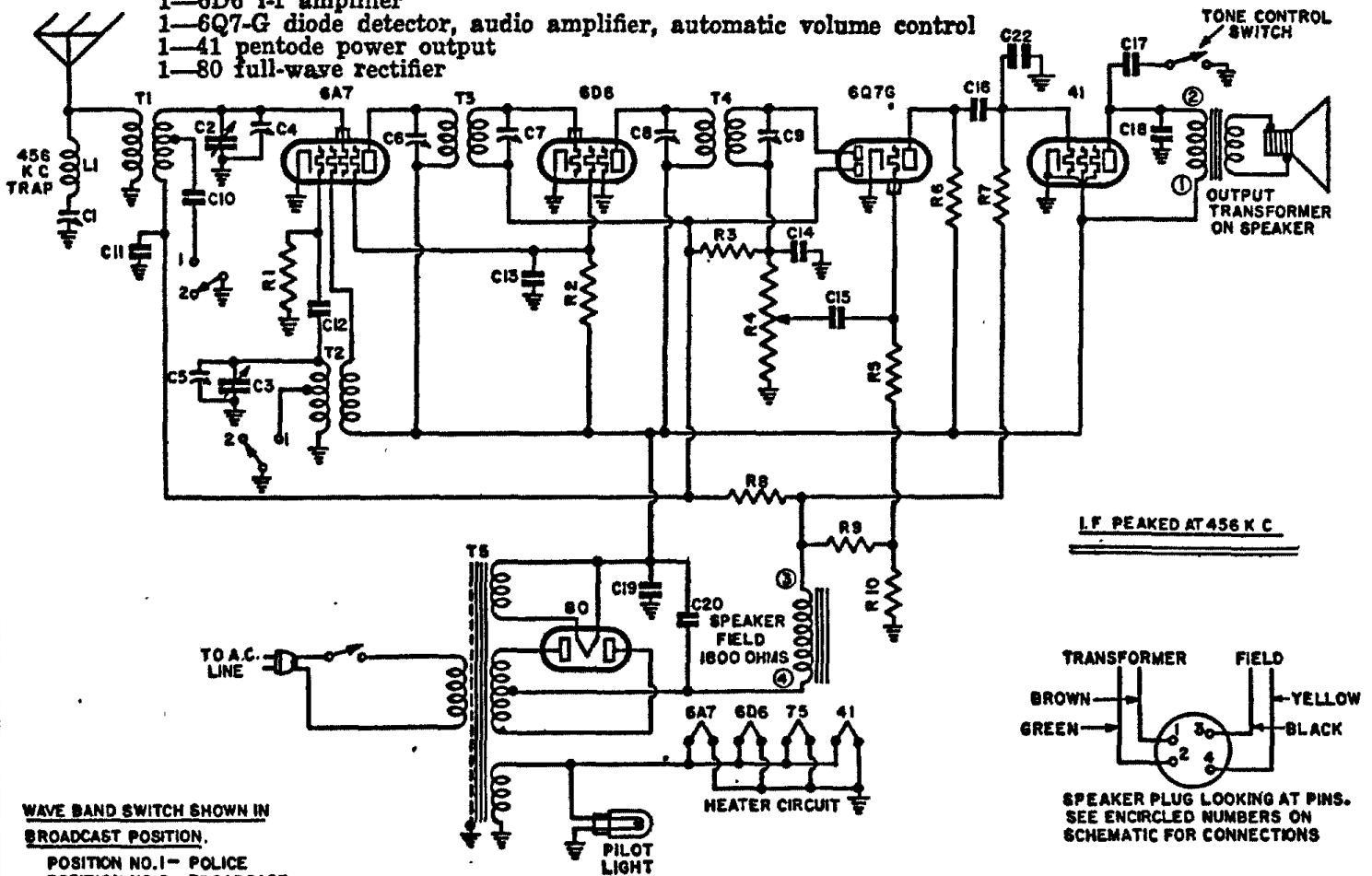
# EMERSON RADIO & PHONO. CORP.

MODELS R152, R153

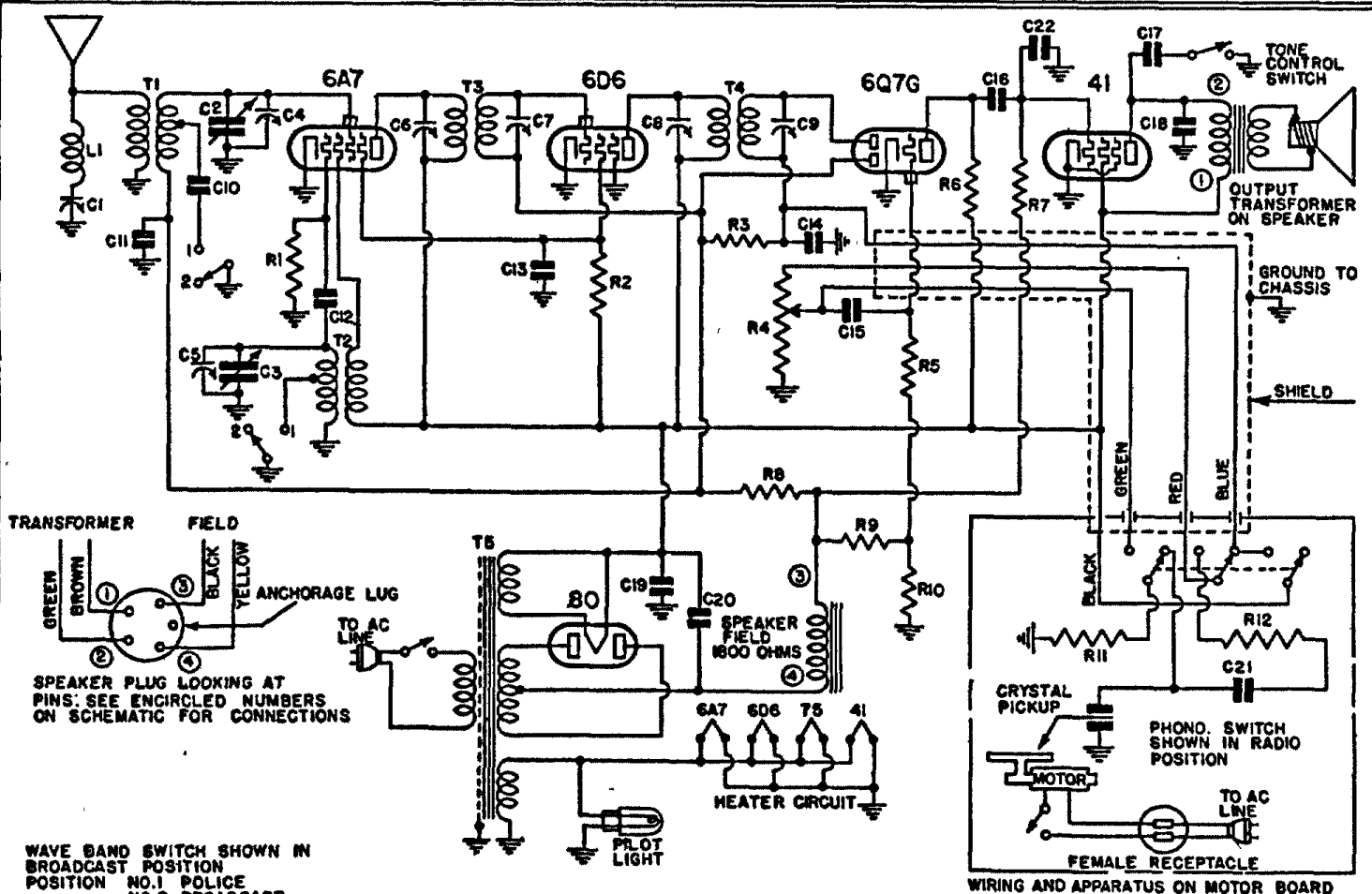
R156, R158

MODELS R167, R189

- 1-6A7 pentagrid oscillator-modulator
- 1-6D6 i-f amplifier
- 1-6Q7-G diode detector, audio amplifier, automatic volume control
- 1-41 pentode power output
- 1-80 full-wave rectifier



The above Schematic applies to Models R152, R153, R156, R158 and R167



I-F PEAKED AT 456 KC

The above Schematic applies to the Model R189