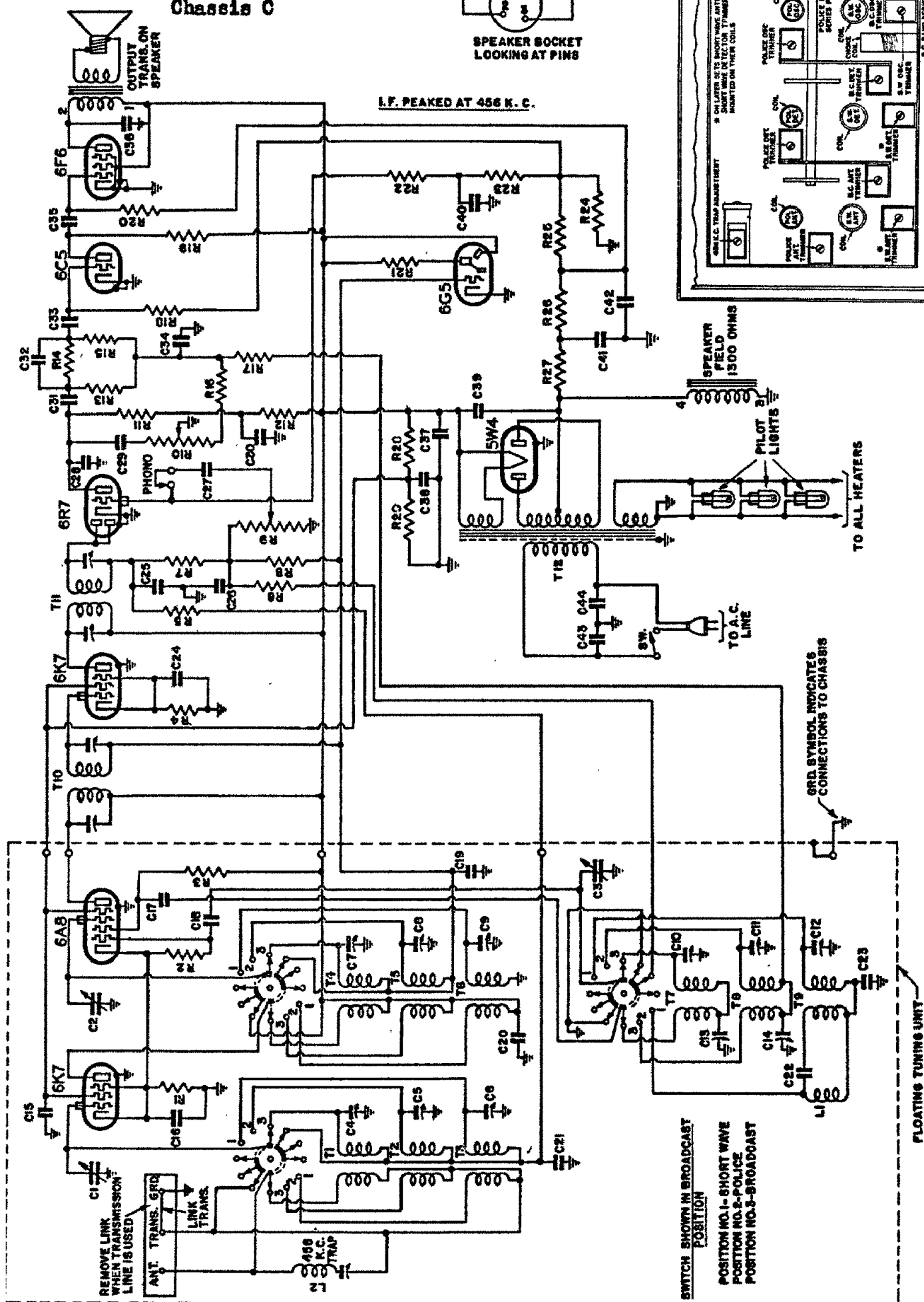
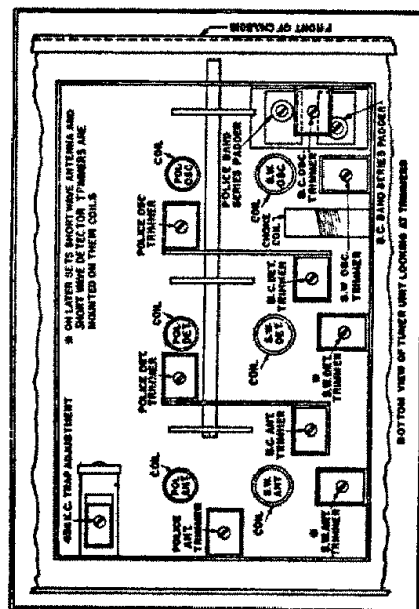
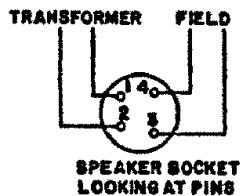


MODELS C134,C136
C138,C139
C140,C142
Chassis C



105-125 volts, a.c.
.70 amps., a.c.
540 to 1800 kc, 1750 to 6000 kc,
5.5 to 18.0 megacycles.

105-125 volts, a.c.

70 amps., a.c.

0 to 1800 kc, 1750 to 6000 kc,

Voltage rating

Current drain

Frequency ranges