

EMERSON RADIO & PHONO CORP.

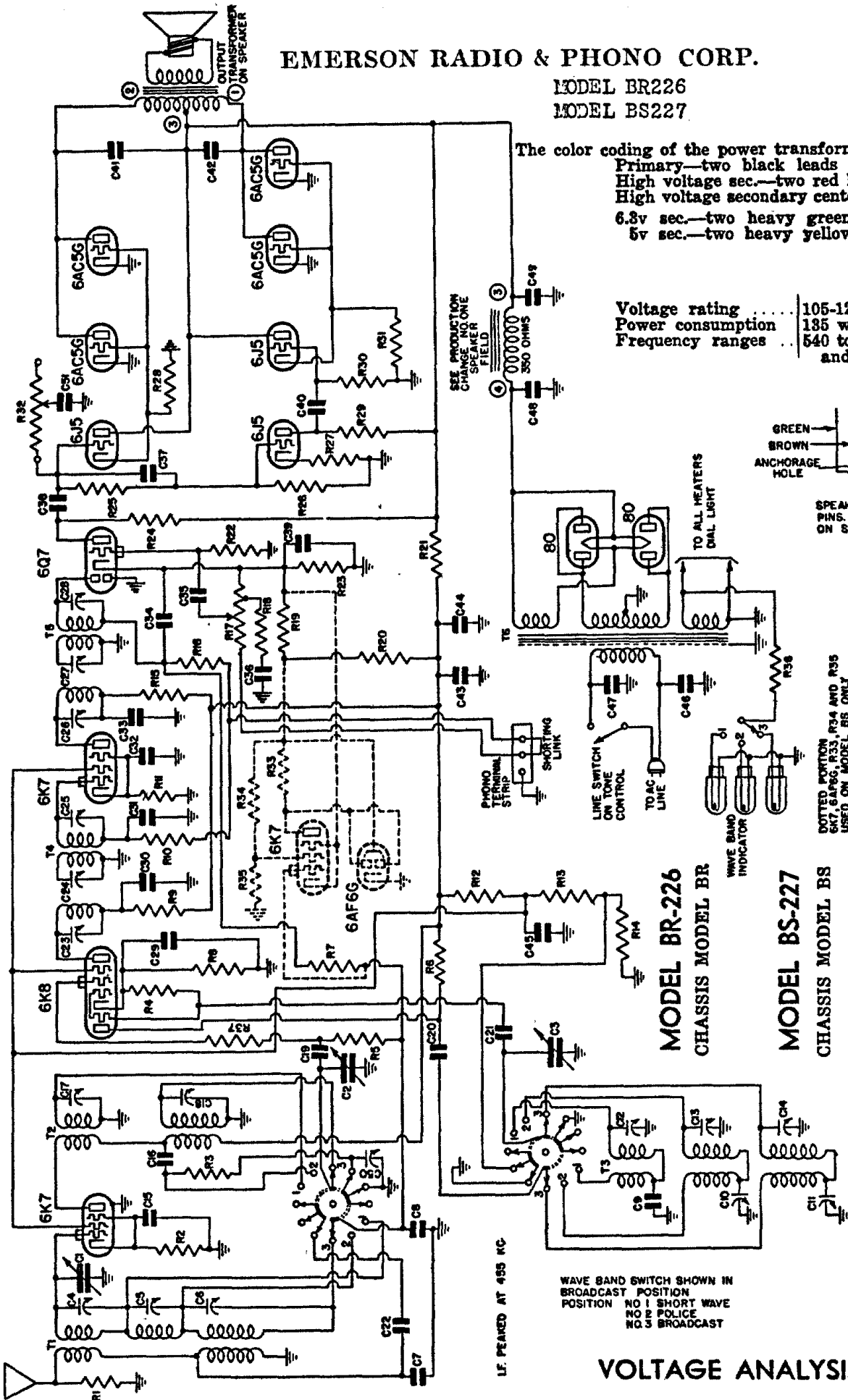
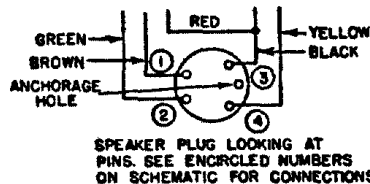
MODEL BR226

MODEL BS227

The color coding of the power transformer leads is as follows:

Primary—two black leads
High voltage sec.—two red leads
High voltage secondary center tap—red and yellow lead
6.3v sec.—two heavy green leads
5v sec.—two heavy yellow leads

Voltage rating 105-125 volts, 60 cycles, a.c.
Power consumption 135 watts at 117.5 volts.
Frequency ranges 540 to 1800 kc, 1800 to 6,250 kc
and 5.8 to 22.0 megacycles.



Tube	Plate
6K7 r-f amplifier	230
6K8 oscillator-modulator	225
6K7 i-f amplifier	215
6Q7 diode detector, a.v.c. first audio	180
6J5 phase inverter	180
6J5 first audio driver	280
6J5 inverted audio driver	280
4-6AC5G's output	275
6K7 electron-ray control (BS only)	*5

Screen	Osc. Plate	Cathode	Fil.
+100		5	6.3
+100	100	4.2	6.3
+100		4.5	6.3
		2.1	6.3
		4.2	6.3
		2.1	6.3
		2.1	6.3
		2.1	6.3
		2.1	6.3
		2.1	6.3

VOLTAGE ANALYSIS

†Readings should be taken with a 1000 ohms-per-volt meter. Voltages listed below are from point indicated to ground (chassis) with volume control full on, band-switch in short-wave position (counter-clockwise) and no signal. Line voltage for these readings was 117.5 volts, 60 cycles, a.c. All readings below 250 volts except heaters and cathodes were taken on 250 volt scale.

Voltage across speaker field—65 volts.

Voltage at 80 filament—350.

*Readings taken at low end of plate and screen resistors of this tube will be 100 volts.

†Model BR chassis using 3XS-237 speaker will have voltages approximately 10 percent lower. Voltage across this speaker field is 80 volts.

†When band-switch is in broadcast and police positions the screen voltages will read 65 volts. Bias readings on these tubes will be slightly lower.