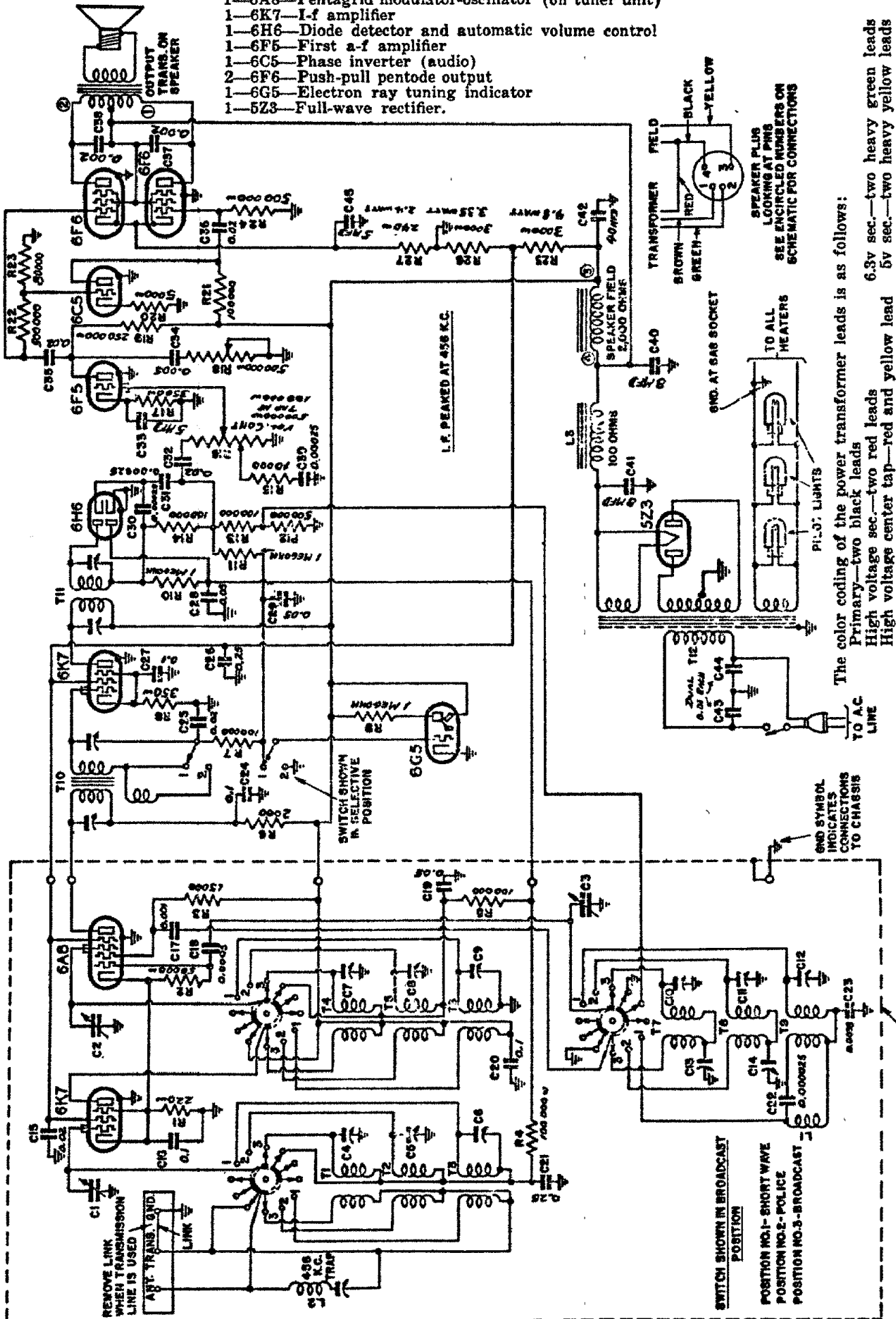


# EMERSON RADIO & PHONO. CORP.

MODEL S D134, D136, D138  
D139, D140, D142  
Chassis D D146

The tube complement is as follows:

- 1—6K7—R-f amplifier (on tuner unit)
- 1—6A8—Pentagrid modulator-oscillator (on tuner unit)
- 1—6K7—I-f amplifier
- 1—6H6—Diode detector and automatic volume control
- 1—6F5—First a-f amplifier
- 1—6C5—Phase inverter (audio)
- 2—6F6—Push-pull pentode output
- 1—6G5—Electron ray tuning indicator
- 1—5Z3—Full-wave rectifier.



The color coding of the power transformer leads is as follows:

- Primary—two black leads
- High voltage sec.—two red leads
- High voltage center tap—red and yellow lead

The tuning indicator (6G5 tube) is mounted in the cabinet above the dial on all the console type receivers, and in the Voltage rating ... 105-125 volts, a.c.  
speaker compartment on the table type receivers. On the table-type receivers it is necessary to remove the speaker Current drain ... 1.1 amps, a.c.  
from the baffle, in order to remove the tuning indicator tube assembly. The color coding of the tuning indicator tube Frequency ranges . 540 to 1800 kc, 1750 to 6000 kc,  
cable is as follows: 5.5 to 18.0 megacycles,

- Shield—cathode
- Blue—plate
- Red—target

Black—filament  
Green—grid

MODELS D-134, D-136, D-138, D-139, D-140, D-142 and D-146

Chassis Model D