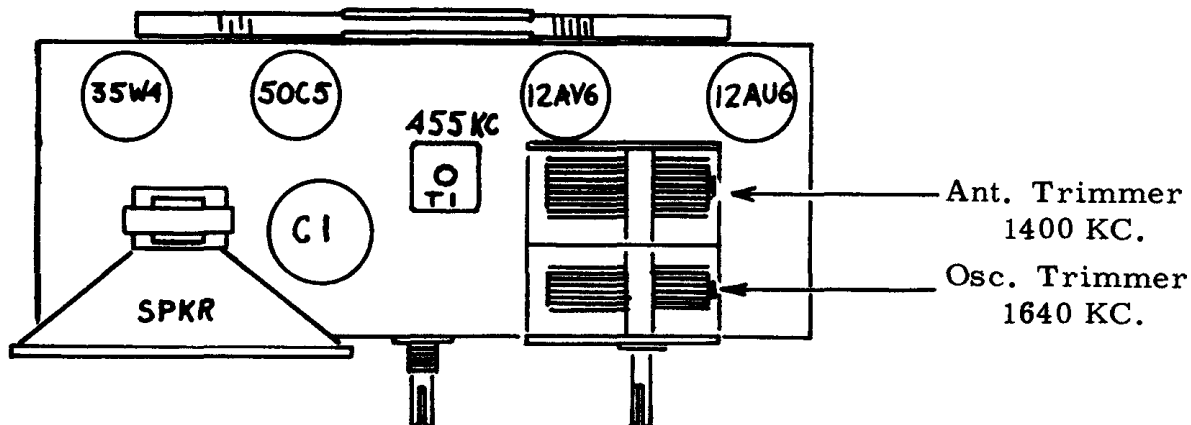
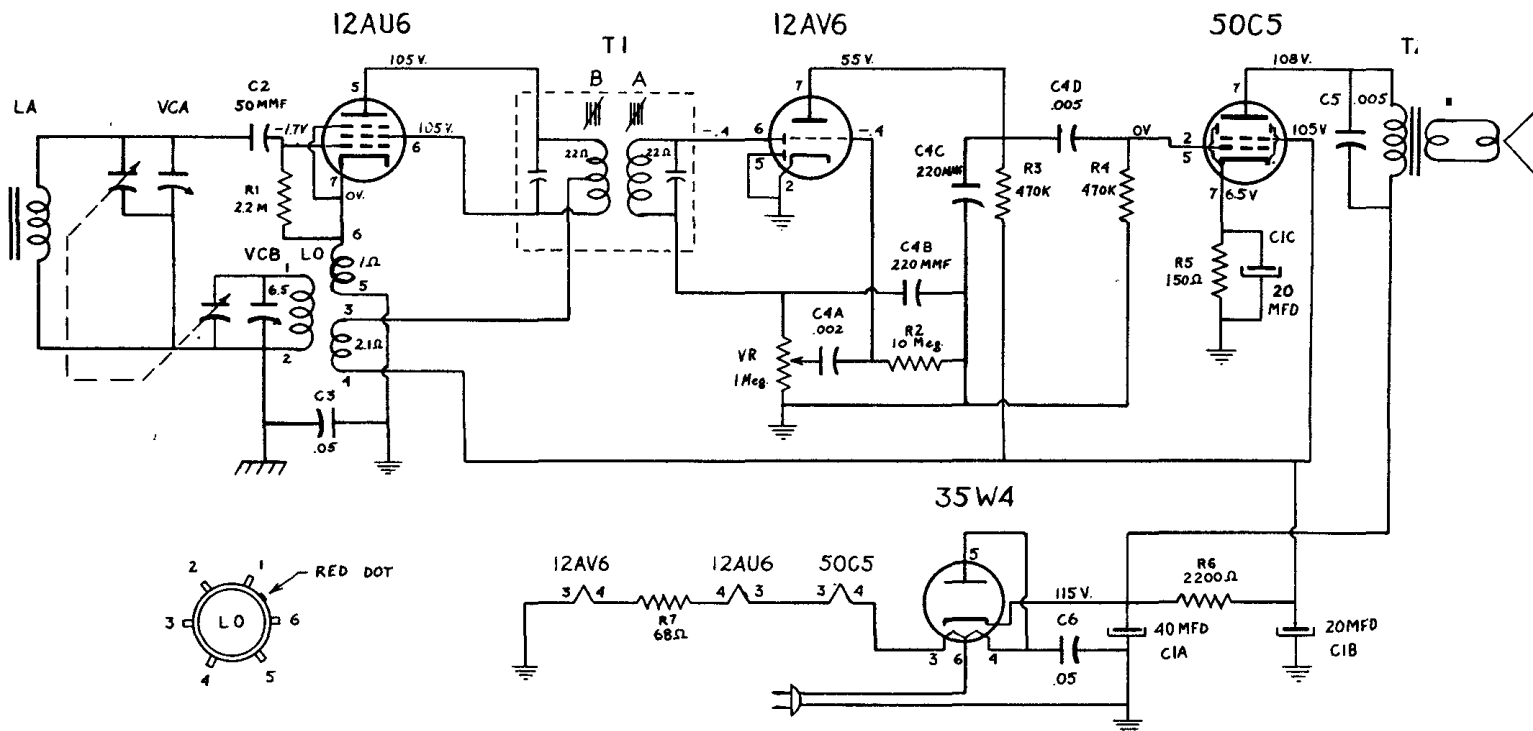


Gamble-Shogmo, Inc.

CORONADO "PAL" RADIO MODEL RA33-8115A



Chassis Top View

ALIGNMENT INSTRUCTIONS

Adjust all trimmers for maximum output. Repeat the procedure given below as final check.

CAUTION: This is an AC-DC receiver, and when aligning the set it is necessary to isolate the signal generator or the receiver from the line by the use of an isolation transformer, or to place a .2MFD condenser in each test lead of the signal generator.

SIGNAL GENERATOR

Frequency	Dummy Antenna	Connection to set	POSITION OF VARIABLE	ADJUST FOR MAXIMUM	NOTES
455 KC	.05 MFD	Stator of VCA	Two-thirds open	T1 A & B	Attenuate gen. for about .4 volt across voice coil. Keep gen. low
1640 KC	.05 MFD	Stator of VCA	Fully open	VCB	
1400 KC	Radiate signal into set with a loop of several turns		Tune in sig. generator	VCA	