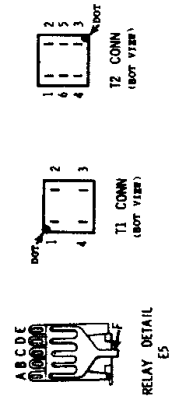
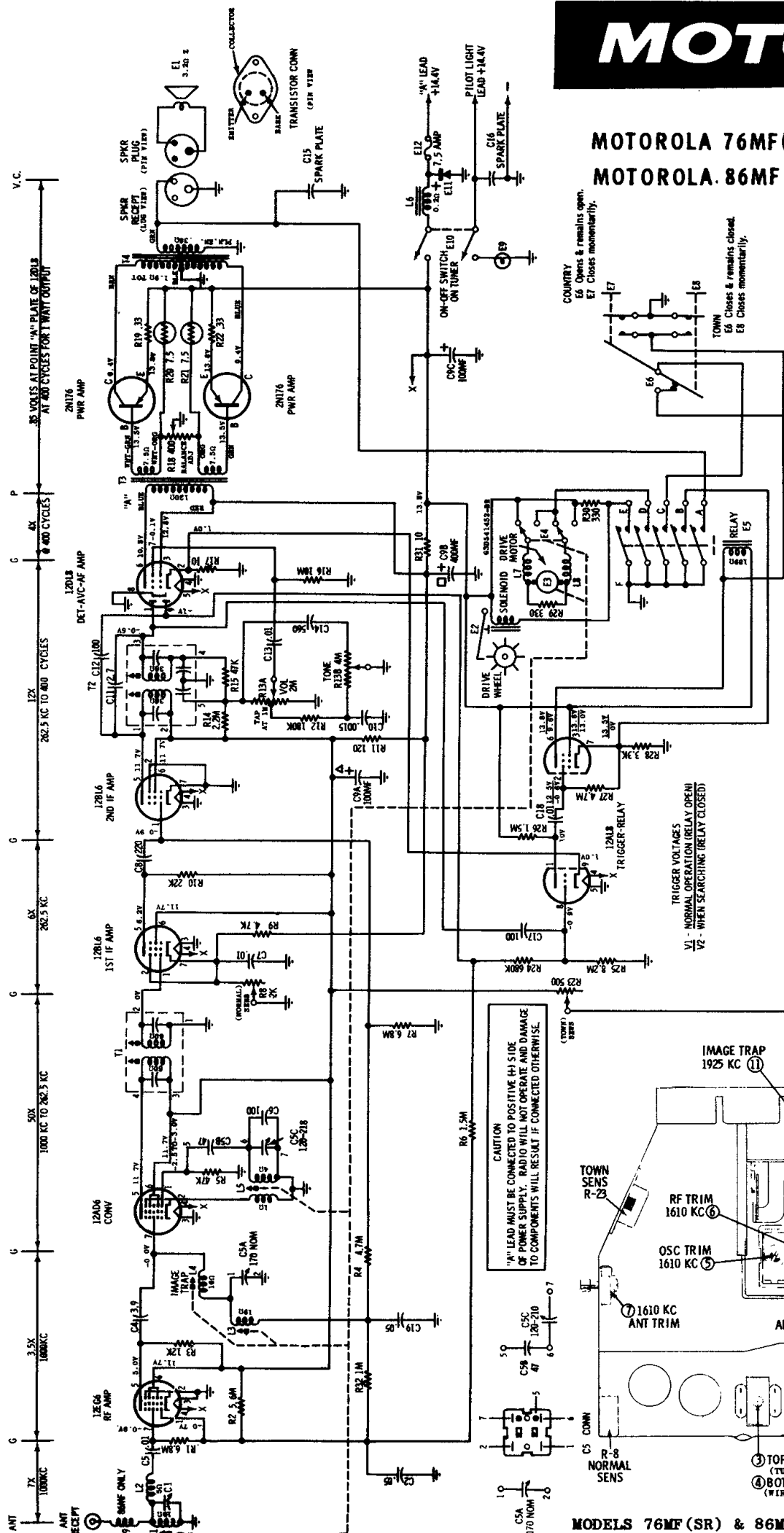


MOTOROLA

MODELS

MOTOROLA 76MF(SR) FORD B7A-18805-B1

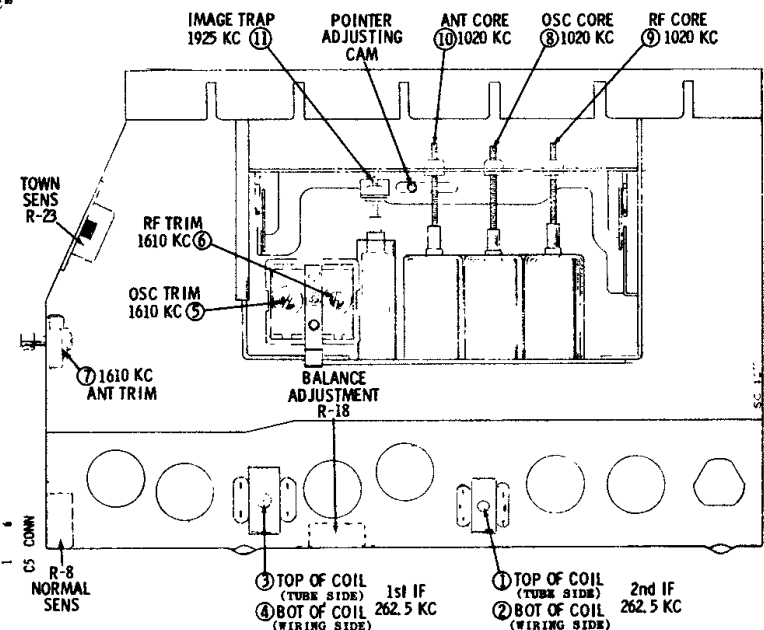
MOTOROLA 86MF FORD B8A-18805-A



NOTES:
CAPACITORS - decimal values in μ F. All others in MFD unless otherwise specified.
VOLTAGES - measured from point indicated to chassis with a VTVM, $\pm 10\%$. No signal input.
INPUT VOLTAGE - 120VAC.
TUNING RANGE - 540-1600KC.
IF - 262.5KC.
Resistances in power amp stage made with transistors removed.

TRANSISTOR CURRENT ADJUSTMENT - After replacing transistor and before connecting radio to power supply, set the transistor balance control (R-18) to the mid-position to prevent excessive current from damaging the transistors. Allow about 15 minutes warm-up time before proceeding with the following:

- Connect a VTVM from collector to collector. Be sure VTVM is accurately zeroed and set to a low voltage scale. NOTE: If VTVM has a center zero scale, use this scale.
 - Adjust R-18 for zero DC reading on VTVM.
- TRANSISTOR INSULATOR** - When replacing a transistor or transistor insulator, be sure to coat both sides of insulator with DC-4 grease (Motorola Part No. 11M490487) to insure proper heat dissipation.



MODELS 76MF(SR) & 86MF ALIGNMENT POINT LOCATION DETAIL