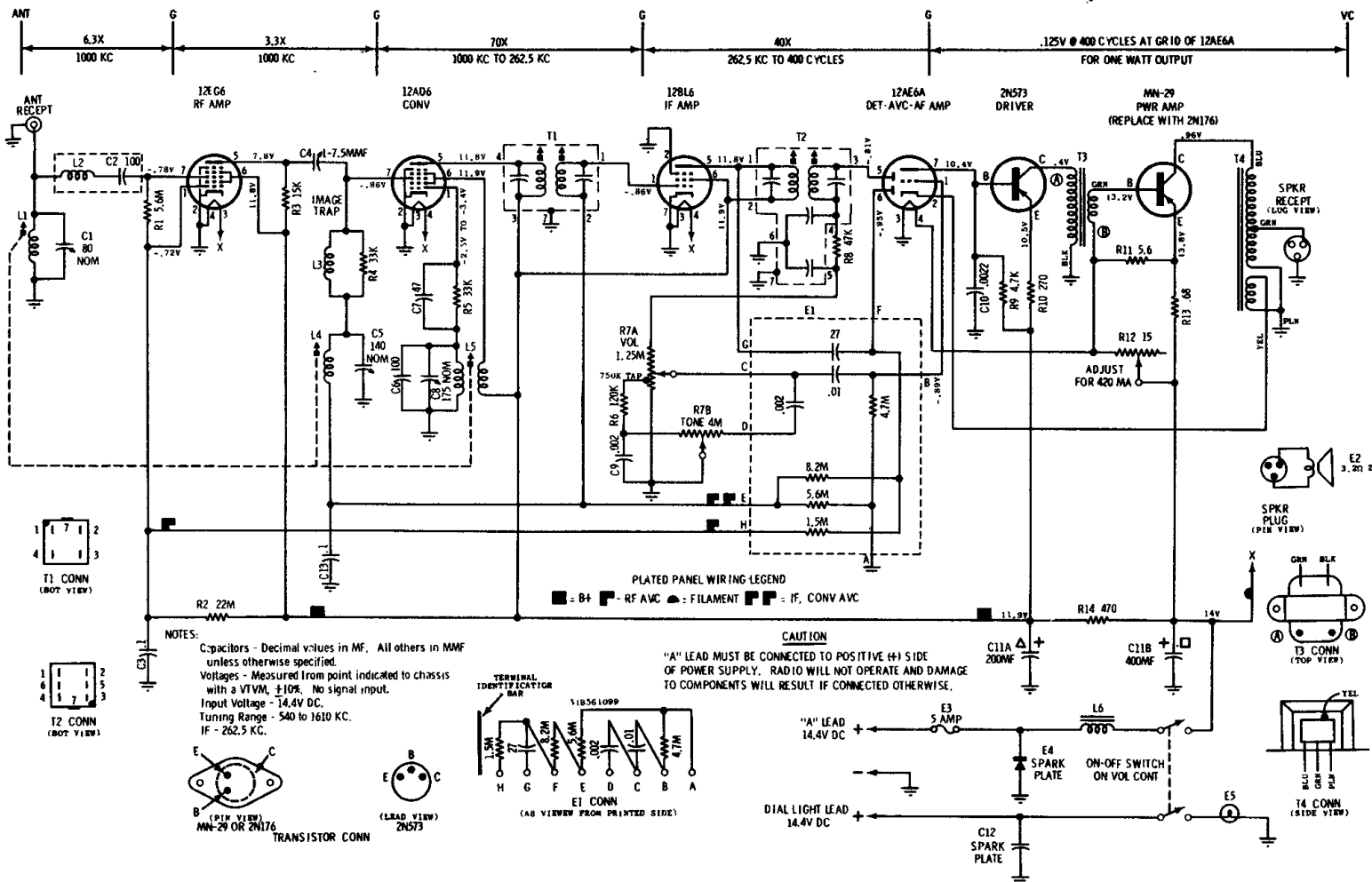
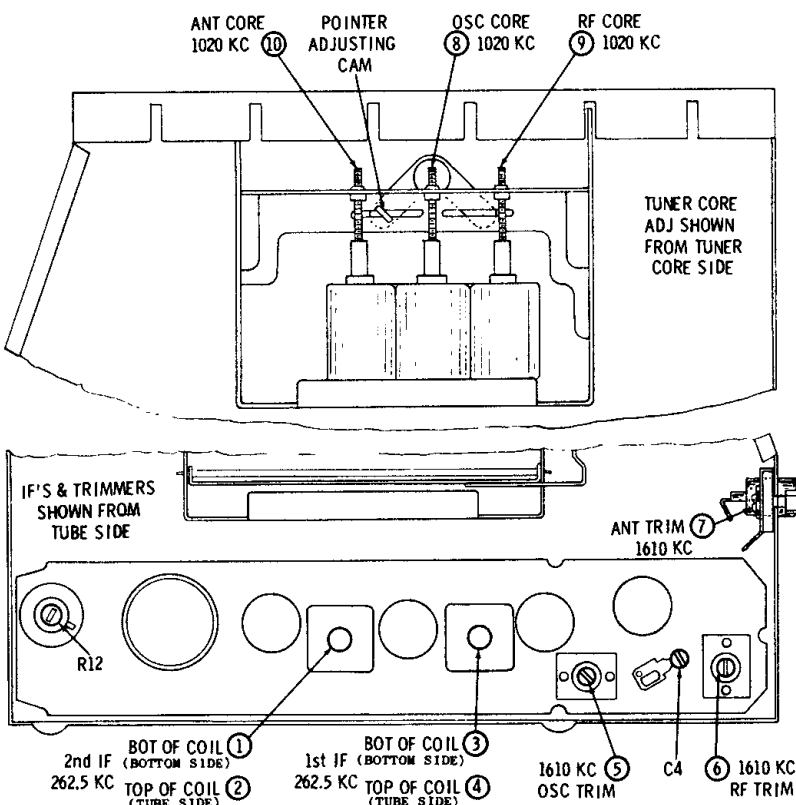


MOTOROLA

MODELS MOTOROLA 94MF, 94MFM FORD B9FA-18806-C, B9FA-18805-E



ALIGNMENT POINT LOCATION DETAIL



NOTE: Do not perform steps 3, 4, 5 & 6 unless tuner has been tampered with or components have been replaced. Before proceeding with step 3, back tuning cores 1-3/8" out of tuning coils to eliminate their effect on trimmer adjustment.

PLATED CIRCUIT COMPONENT REPLACEMENT

Most of the components can be removed from the panel with the aid of a soldering iron. When using a soldering pot, it may be difficult to dip some of the components close to the edge of the panel because of interference from the radio housing. To use a soldering pot on these components, it will be necessary to partially drop the panel from the housing, to do this proceed as follows:

- Remove two screws which hold radio housing to front plate (on volume control side of housing).
- Unsolder connecting lead from antenna spark choke at trimmer side.
- Unsolder plated panel support bracket from housing and panel, bend ears straight, and carefully remove from plated panel.
- Carefully remove plated panel from housing and drop below edge of housing.
- Replace screws removed from housing in step "a." so panel and housing will be more solid during soldering operation.

PLATED CHASSIS REMOVAL - If necessary to remove the plated panel completely from radio housing, proceed as follows:

- Remove two screws which hold radio housing to front plate (on volume control side of housing).
- Unsolder connecting leads to free panel. Where possible, avoid unsoldering leads at plated panel.
- Unsolder plated panel support bracket from housing and panel, bend ears straight, and carefully remove bracket from panel and housing.
- Plated panel will now be free for careful removal from housing.

MODEL
MOTOROLA 95MF
FORD B9FA-18806-B

