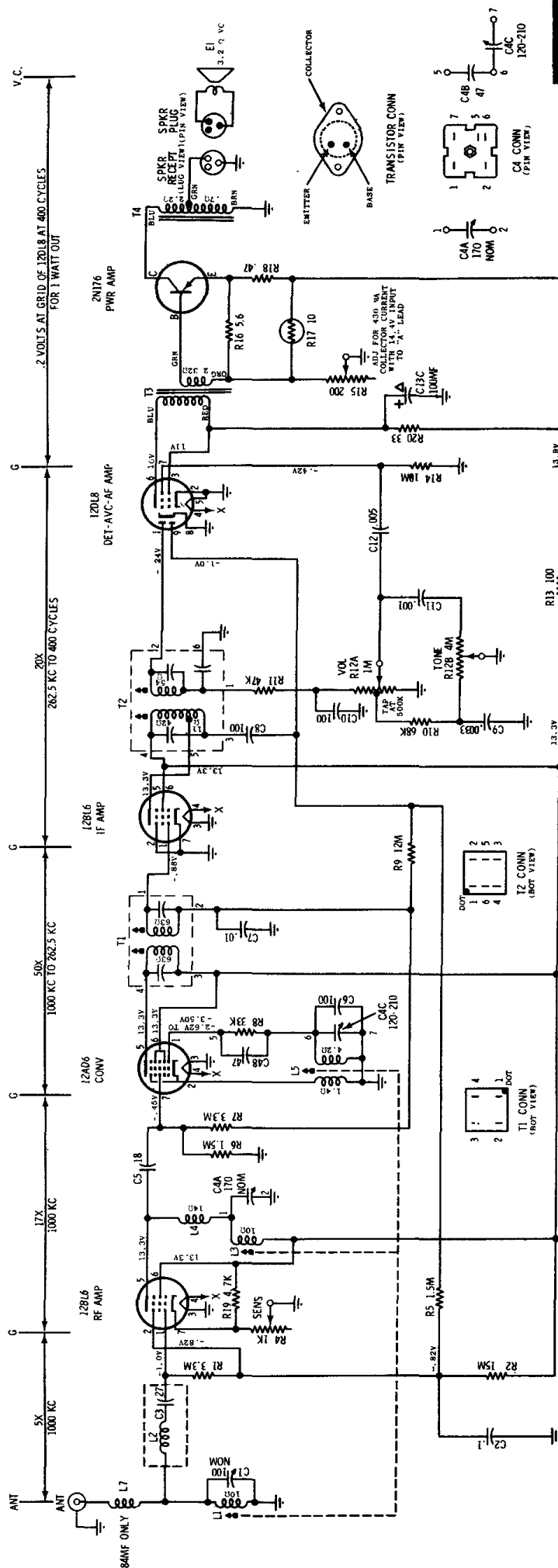


MOTOROLA

MODELS

MOTOROLA 74MF FORD B7A-18805-A1

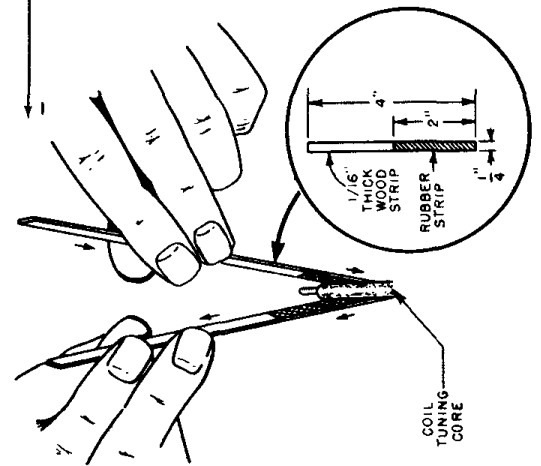
MOTOROLA 84MF FORD B8A-18805-B



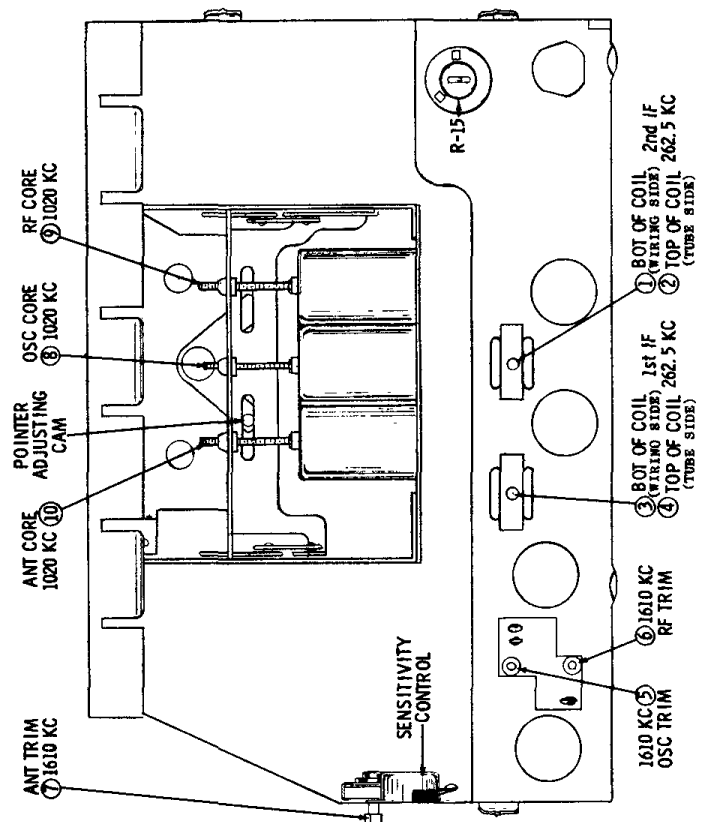
CAUTION

"A" LEAD MUST BE CONNECTED TO POSITIVE (+) SIDE OF POWER SUPPLY. RADIO WILL NOT OPERATE OR DAMAGE TO COMPONENTS WILL RESULT IF CONNECTED OTHERWISE.

NOTES:
CAPACITORS - decimal values in MF. All others in MMF unless otherwise specified.
VOLTAGES - Measured from point indicated to chassis with a VTVM. Tolerance $\pm 10\%$.
No signal input.
IF - 262.5 KC.
TUNING RANGE - 540 KC TO 1610 KC.
Resistances measured in power amp stage with transistor removed.



CORE ALIGNMENT TOOL DETAIL



MODEL 74MF & 84MF ALIGNMENT POINT LOCATION DETAIL