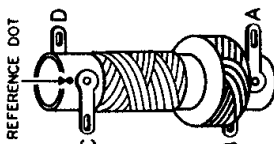
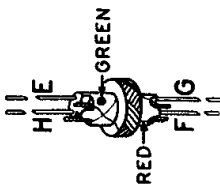




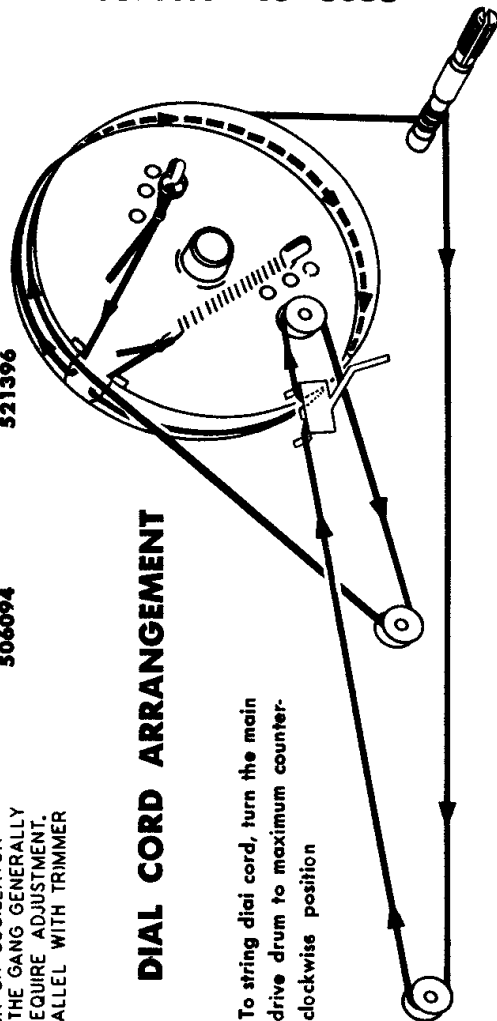
Lettered terminals in illustration correspond to similarly lettered terminals on the circuit diagram.



R.F. COLL
521396



**OSCILLATOR
COIL
506094**



DIAL CORD ARRANGEMENT

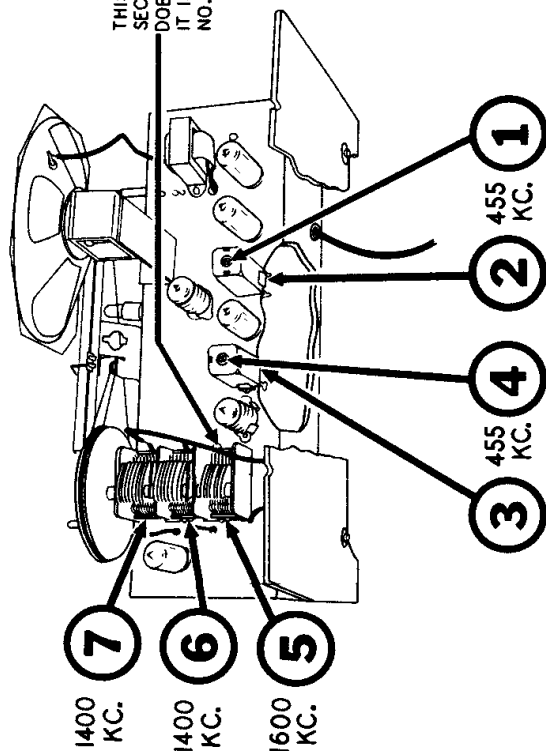
To string dial cord, turn the main drive drum to maximum counterclockwise position

VOLTAGE MEASUREMENTS

All voltages measured to B— using a 20,000 ohm per volt meter with the receiver connected to a 117 volt 60 cycle power supply.

Loop terminals shorted together.

No voltage reading at a tube element indicates zero voltage or voltage which cannot be accurately measured with a 20,000 ohm per volt meter.



TRIMMER LOCATION CHART

Gamble-Skogmo, Inc.

CORONADO RADIO

MODEL 35RA37-43-8355