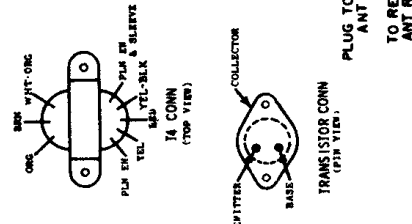


FORD FEG-18806-G



DIMMY ANTENNA DETAIL

CAUTION

NOTES:
Capacitors - decimal values in μF . All others in MME unless otherwise specified.
Voltages - measured from point indicated to chassis with a VTVM, $\pm 10\%$. No signal input.
Input Voltage - 14.4 VDC.
Tuning Range - 540 to 1610 KC.
IF - 262.5 KC
Resistances in Per Amp stage made with Transistors removed.

COLLECTOR CURRENT ADJUSTMENT - The collector current is adjusted by variable resistor R-27, for a 870 Ma current flow through the transistors, with 12 volts at the receiver's "A" lead. Separate the transistor mounting heat sink from the housing, connect the negative lead of a low internal resistance milliammeter to the radio housing and the positive lead to the heat sink. Adjust variable resistor R-27, for 870 milliamperes.

NOTE: Internal resistance of milliammeter should not exceed .5 ohm.

T-2 COUPLING - The coupling of IF transformer T-2 has been increased by soldering a 1-1/2" length of insulated wire from pin #3 of T-2, and winding one turn of this wire around the plate lead of capacitor C-12. When replacing either T-2 or C-12, this wire should also be replaced. If omitted, the stopping accuracy of the receiver will be affected.