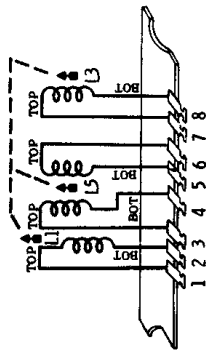
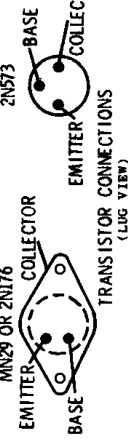


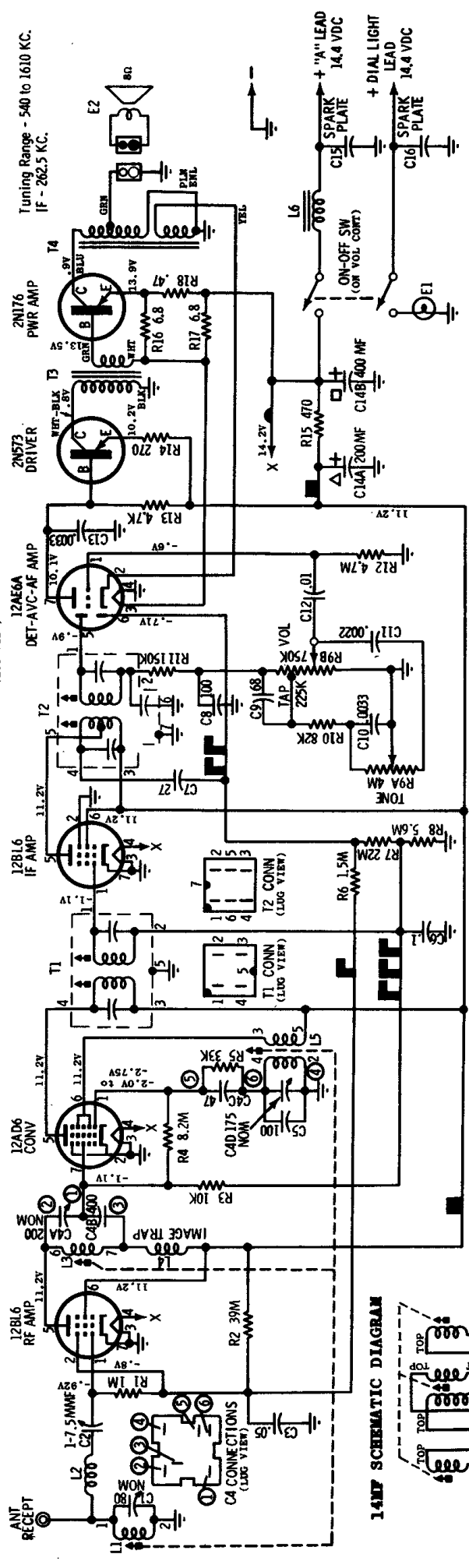
14MF Schematic



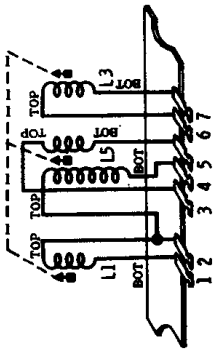
PLATED PANEL WIRING LEGEND  
 ■ = RF AVC  
 ■ = IF, CONV AVC  
 ■ = FILAMENT  
 ■ = DET, AVC-AF AMP  
 ■ = PWR AMP



CAUTION  
 "A" LEAD MUST BE CONNECTED TO POSITIVE (+) SIDE OF POWER SUPPLY. RADIO WILL NOT OPERATE AND DAMAGE TO COMPONENTS WILL RESULT IF CONNECTED OTHERWISE.



14MF Schematic Diagram



NOTES:  
 Capacitors - Decimal values in MF. All others in MME unless otherwise specified.  
 Voltages - Measured from point indicated to chassis with a VTVM,  $\pm 10\%$ . No signal input.  
 Input Voltage - 14.4V DC.

**MOTOROLA**

MOTOROLA FORD  
 14MF C1A F-18805-D  
 14MFM C1A F-18805-C  
 04MD C0A F-18805-D

MOTOROLA	FORD
14MF	C1AF-18805-D
14MFM	C1AF-18805-C
04MD	C0AF-18805-D

