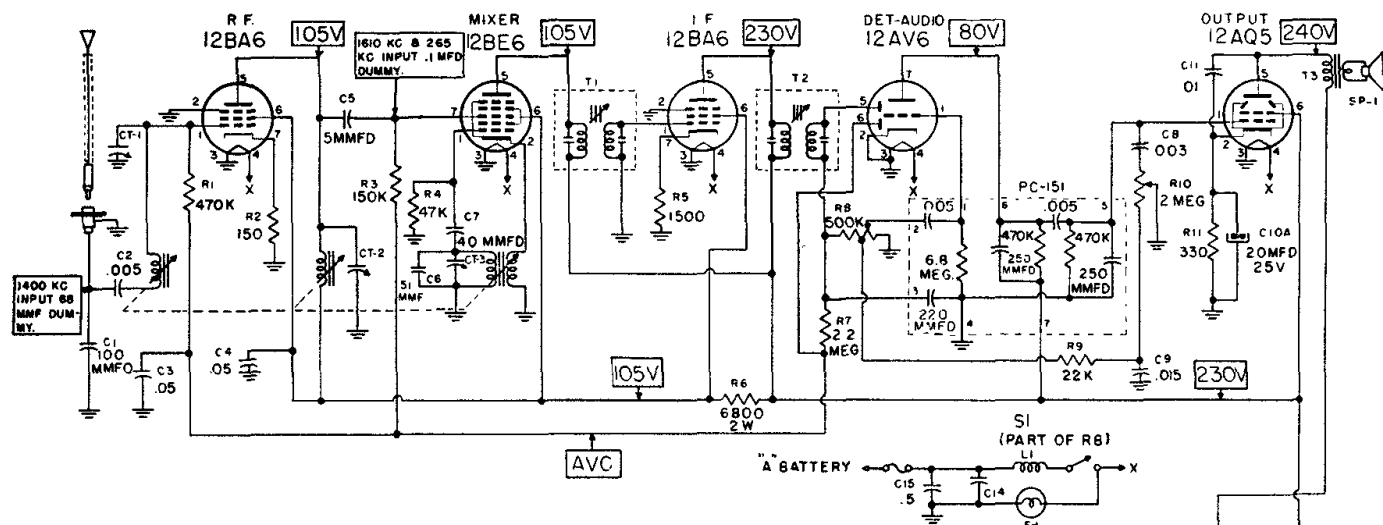


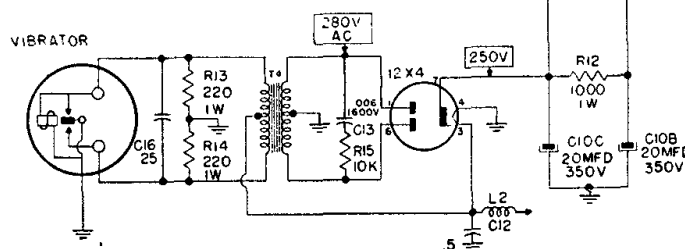
THE FIRESTONE TIRE & RUBBER CO.

Stock No. 4-B-82
Code No. 120-6-MP69
(6 Volt)

Stock No. 4-B-83
Code No. 120-6-MP126
(12 Volt)



This is an exact schematic for the 12-volt model. The 6-volt model is identical except that the tubes are of the corresponding 6-volt series.



ALIGNMENT PROCEDURE

Connect dummy antenna in series with output lead of signal generator.

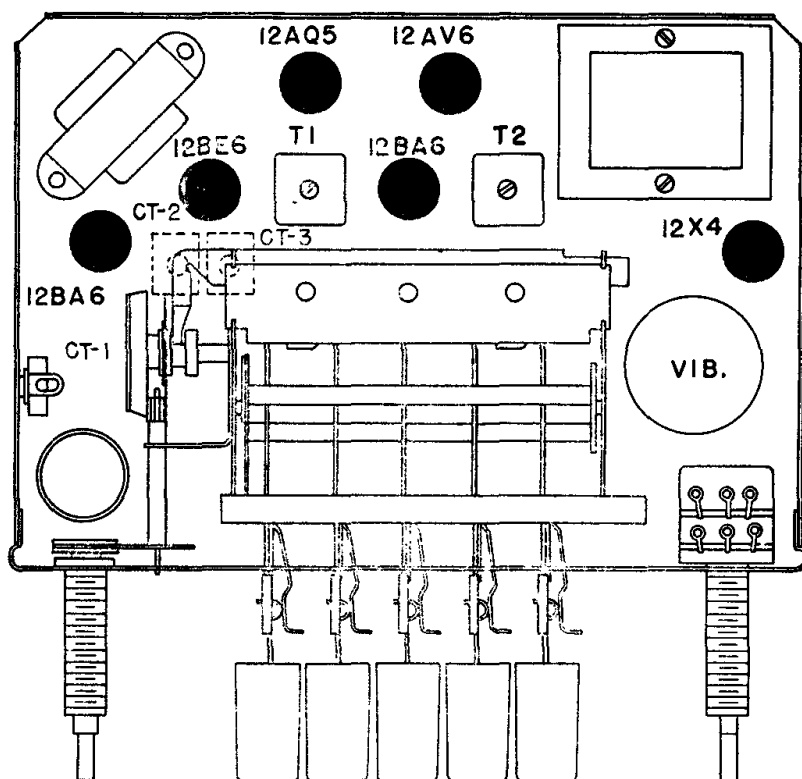
Connect ground lead of generator to chassis. All adjustments maximum.

For alignment input points refer to schematic diagram.

1. Set receiver dial at extreme high end (1610 KC).
Adjust T2 top and bottom at 265 KC.
Adjust T1 top and bottom at 265 KC.
Adjust CT-3 for 1610 KC.
2. Tune in 1400 KC signal from generator.
Adjust CT-1 and CT-2 (68 MMFD dummy).
3. After installing radio in car, re-trim CT-1 on weak station near 1400 KC with antenna fully extended.

PUSH-BUTTON OPERATION

To set any push-button, pull the button straight out, select the desired station with the STATION SELECTOR KNOB and press in the push-button. Any push-button may be re-set at any time without disturbing the setting of the other buttons.



Tube and Trimmer Locations