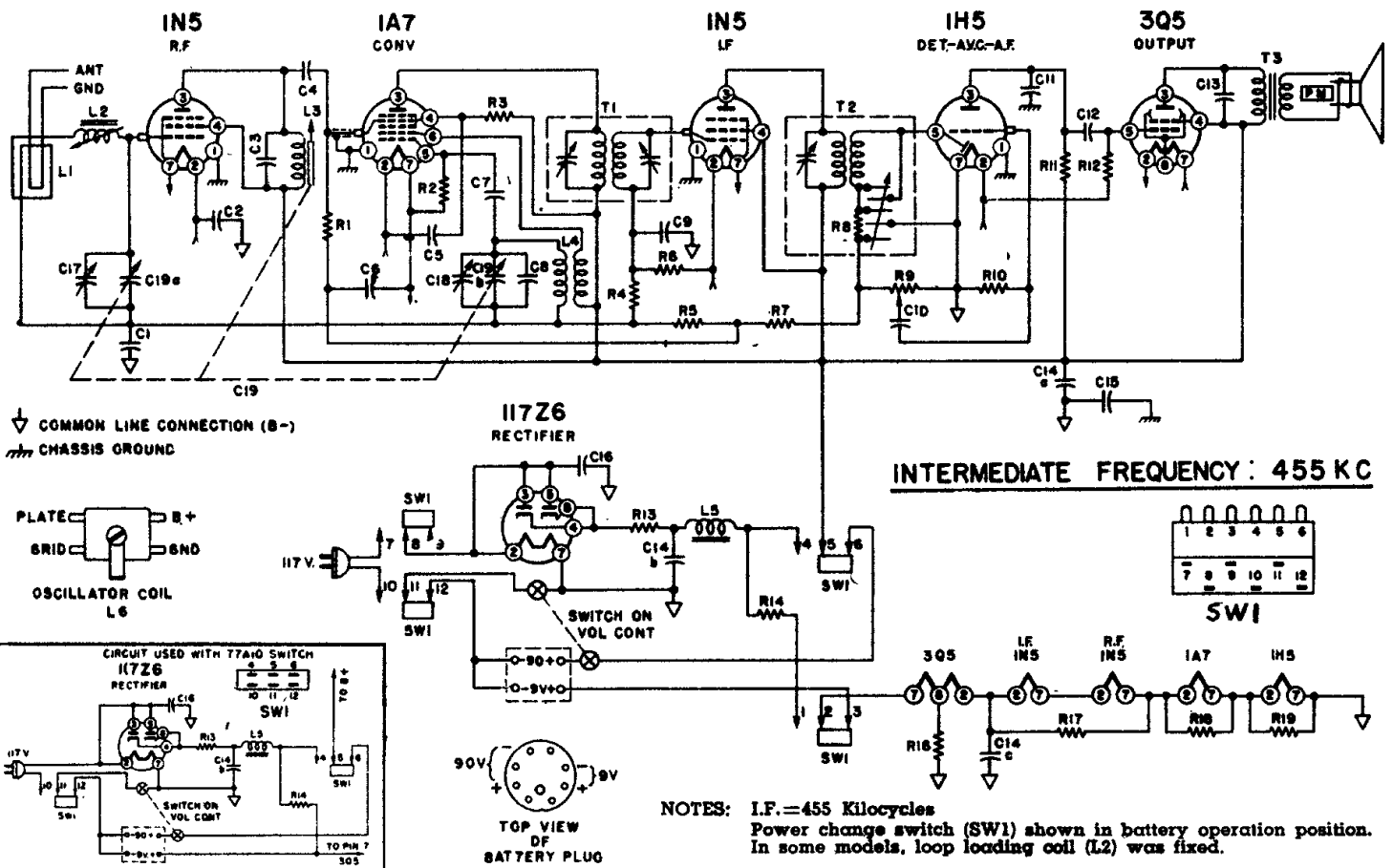


Models **R662**
 R662N



CONDENSERS

Symbol	Description	Part No.
C1	.05 Mfd., 200 Volt, Paper	64B1-32
C2	.25 Mfd., 200 Volt, Paper	64B1-28
C3	.00042 Mfd., Mica	65B1-9
C4, C11	.00025 Mfd., Mica	65B5-22
C5, C6, C9, C10, C12	.01 Mfd., 400 Volt, Paper	64B1-25
C7	.00005 Mfd., Mica	65B5-11
C8	.000015 Mfd., Mica	65B5-3
C13	.002 Mfd., 600 Volt, Paper	64B1-14
C14a	50 Mfd., 150 Volt	Elect. Cond. 67C7-42
C14b	30 Mfd., 150 Volt	
C14c	100 Mfd., 25 Volt	
C15	.2 Mfd., 400 Volt, Paper	64A2-1
C16	.05 Mfd., 400 Volt, Paper	64B1-22
C17	Antenna Trimmer	66A12-5
C18	Oscillator Trimmer (Part of Gang)	
C19	C18a C19b	Condenser, Gang 68B4

RESISTORS

R1	100,000 Ohms, 1/2 Watt, Carbon	60B8-104
R2	220,000 Ohms, 1/2 Watt, Carbon	60B8-224
R3	47,000 Ohms, 1/2 Watt, Carbon	60B8-473
R4, R5	4.7 Megohms, 1/2 Watt, Carbon	60B2-475

RESISTORS

Symbol	Description	Part No.
R6	4.7 Megohms, 1/2 Watt, Carbon	60B2-475
R7	3.3 Megohms, 1/2 Watt, Carbon	60B2-335
R8	50,000 Ohms, 1/2 Watt, Carbon	60B8-503
R9	1 Megohm Volume Control	75B1-100
R10	15 Megohms, 1/2 Watt, Carbon	60B2-156
R11	1 Megohm, 1/2 Watt, Carbon	60B2-105
R12	2.2 Megohms, 1/2 Watt, Carbon	60B2-225
R13	22 Ohms, Wire Wound, 1/2 Watt	61A2-2
R14	2,450 Ohms, Wire Wound, 5 Watt	61A3-5
R16	1,500 Ohms, 1/2 Watt, Carbon	60B8-152
R17	560 Ohms, 1/2 Watt, Carbon	60B8-561
R18	220 Ohms, 1/2 Watt, Carbon	60B8-221
R19	120 Ohms, 1/2 Watt, Carbon	60B8-121

COILS & TRANSFORMERS

L2	{ Coil, Loop Loading, (fixed)	AA114
	{ Coil, Loop Loading, (variable)	AA115
L3	{ Iron Slug for plate coil	71B1-3
	{ Coil, Plate	70A1-30
L4	Oscillator Coil	69A7
L5	Choke Filter	74A5
T1	1st I.F. Transformer	72B9-2

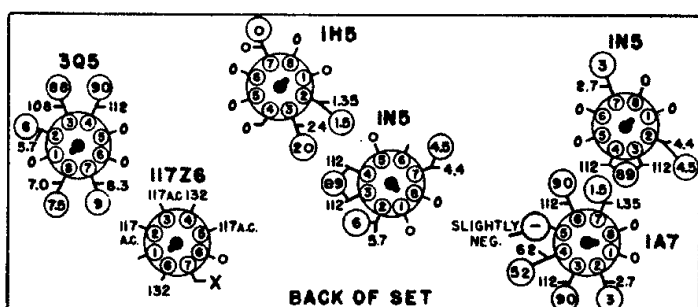
COILS & TRANSFORMERS

Symbol	Description	Part No.
T2	2nd I.F. Transformer	72B10-2
T3	Transformer, Output	e
eWhen ordering, specify all numbers on the speaker and transformer.		
SW1	Switch, Power Change (R662)	77A6
	Switch, Power Change (R662N)	77A10

MISCELLANEOUS

Description	Part No.
Dial Background	21A18-2
Dial Cord, 12"	50A1-3
Dial Cord Tension Spring	19A1-2
Escutcheon and Dial Scale.....	23C14
Knob, Tuning	33A14-6
Knob, Volume	33A14-5
Plug, Battery (9 prong).....	88A3-3
Pointer, Cream Tenite.....	25A15-1
Speaker & Output Transformer.....	78B8
Tube Shields	87A8

VOLTAGE CHART



VOLTAGE DATA

1. Voltage readings circled (O) are for Battery Operation.
2. All readings made between Tube Socket Terminals and Terminal No. 7 on the 117Z6 (Point "X" on Voltage Chart).
3. A.C. Voltages measured on a 117 Volt A.C. line.
4. Battery Voltages measured with a fresh battery.
5. Dial turned to low frequency end, no signal.
6. All Voltages measured with a 1000 ohm-per-volt meter.