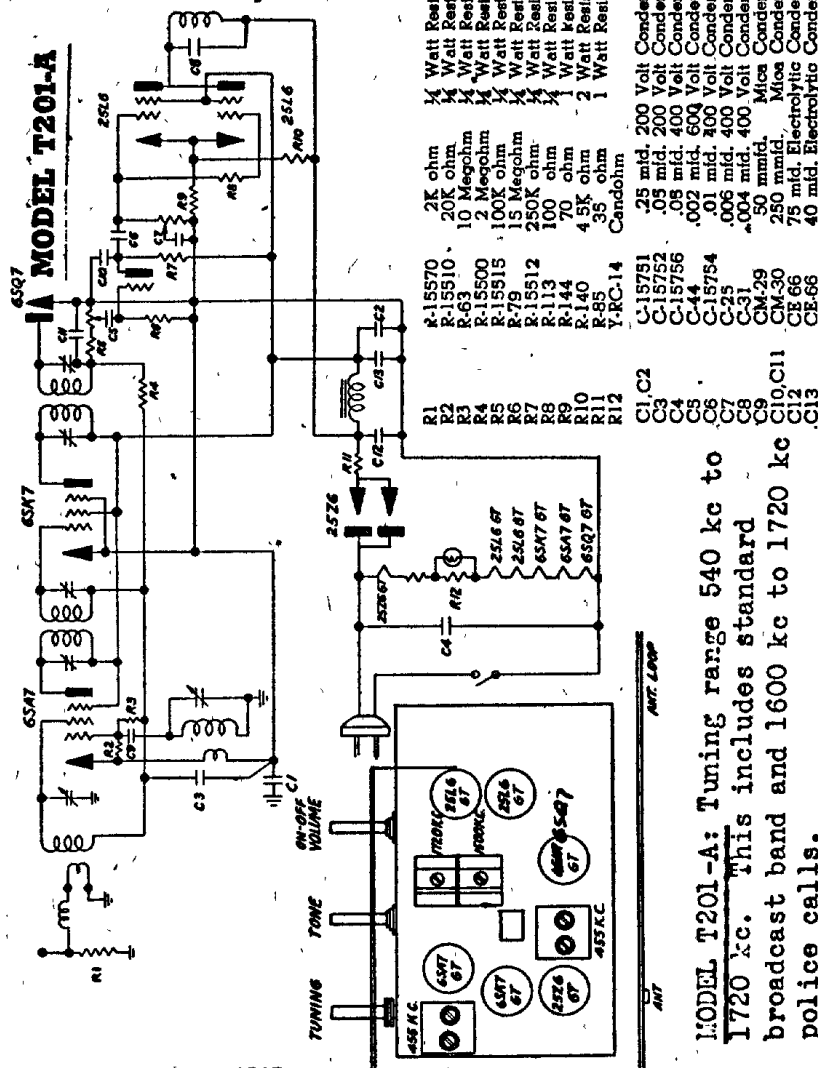
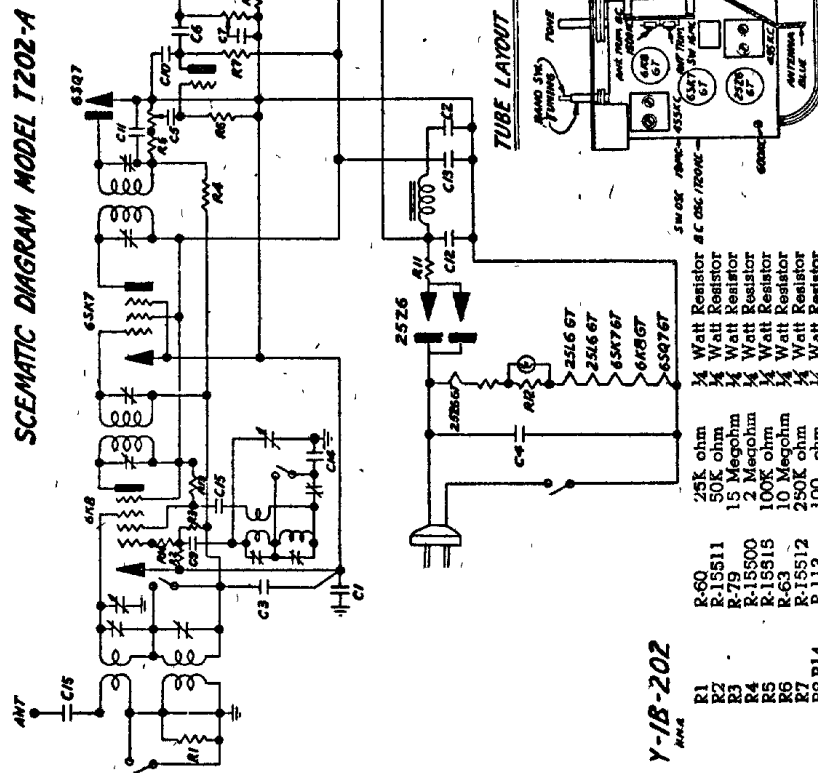


MODEL T201-A
MODEL T202-A
MODELS TP221-A, TP231-A

MAJESTIC RADIO & TELEV. CORP.

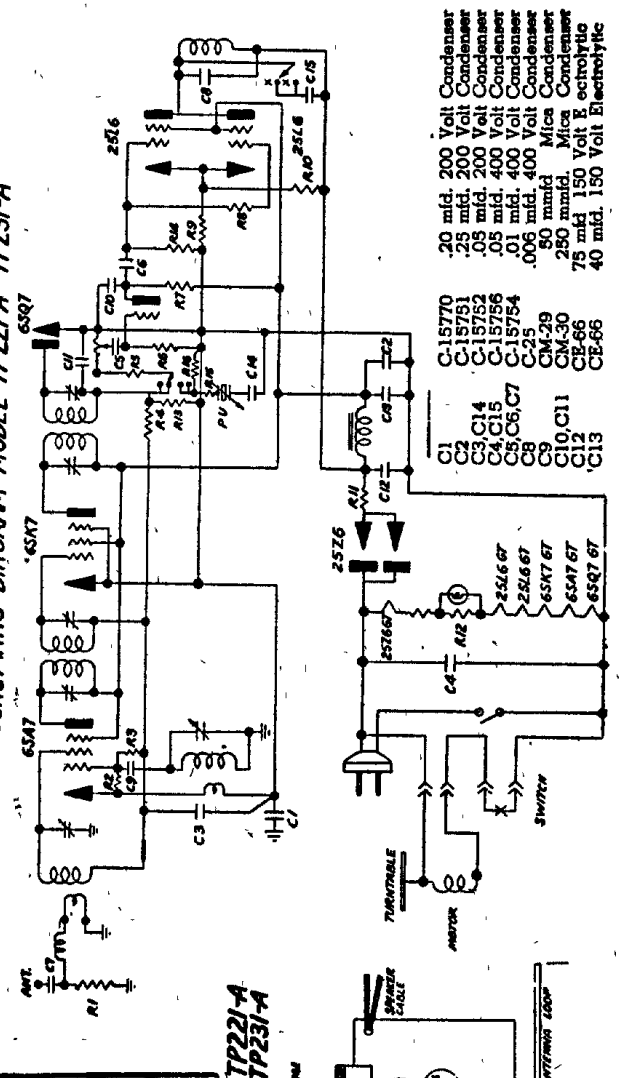


MODEL T201-A: Tuning range 540 kc to 1720 kc. This includes standard broadcast band and 1600 kc to 1720 kc police calls.

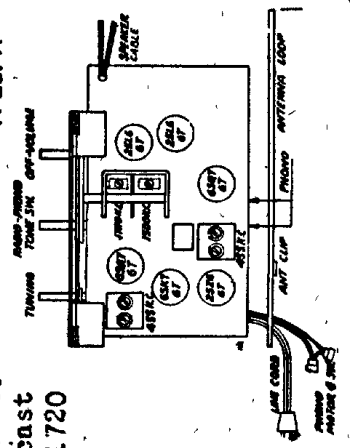


MODEL T202-A: Tuning 540 to 1720 kc; includes standard b.c. and police calls in 1600 to 1720 kc spectrum. Also 5,800 to 18,600 kc, American and foreign short waves, ships, planes, trans-Atlantic phone.

SCHEMATIC DIAGRAM MODEL TP221-A TP231-A



MODEL TP221-A, TP231-A: Tuning range 540 to 1720 kc. This includes standard broadcast and police calls lying in the 1600 to 1720 kc range.



Y-18-202

- | | | | | | |
|-----|--------------------------------|-----|-----------|--------|--------------------------------|
| R1 | 25K ohm | R6Q | 25K ohm | R15751 | .25 mid. 200 Volt Condenser |
| R2 | 50K ohm | R7 | 50K ohm | R15752 | .05 mid. 200 Volt Condenser |
| R3 | 15 Megohm | R8 | 15 Megohm | R15756 | .05 mid. 200 Volt Condenser |
| R4 | 100K ohm | R9 | 100K ohm | C44 | .002 mid. 400 Volt Condenser |
| R5 | 100K ohm | R10 | 100K ohm | C15754 | .01 mid. 300 Volt Condenser |
| R6 | 100K ohm | R11 | 100K ohm | C15754 | .006 mid. 400 Volt Condenser |
| R7 | 100K ohm | R12 | 100K ohm | C25 | .004 mid. 400 Volt Condenser |
| R8 | 100K ohm | R13 | 100K ohm | CM-31 | 80 mmid. Mica Condenser |
| R9 | 100K ohm | R14 | 100K ohm | CM-30 | 250 mmid. Mica Condenser |
| R10 | 100K ohm | R15 | 100K ohm | CE-66 | 75 mid. Electrolytic Condenser |
| R11 | 100K ohm | R16 | 100K ohm | CE-66 | 40 mid. Electrolytic Condenser |
| R12 | 100K ohm | R17 | 100K ohm | | |
| R13 | 100K ohm | R18 | 100K ohm | | |
| C1 | .25 mid. 200 Volt Condenser | | | | |
| C2 | .05 mid. 200 Volt Condenser | | | | |
| C3 | .05 mid. 200 Volt Condenser | | | | |
| C4 | .002 mid. 400 Volt Condenser | | | | |
| C5 | .01 mid. 300 Volt Condenser | | | | |
| C6 | .006 mid. 400 Volt Condenser | | | | |
| C7 | .004 mid. 400 Volt Condenser | | | | |
| C8 | 80 mmid. Mica Condenser | | | | |
| C9 | 250 mmid. Mica Condenser | | | | |
| C10 | 75 mid. Electrolytic Condenser | | | | |
| C11 | 40 mid. Electrolytic Condenser | | | | |
| C12 | | | | | |
| C13 | | | | | |

- | | | | | | |
|------|-----------|------|-----------|--------|--------------------------------|
| R1 | 25K ohm | R6Q | 25K ohm | R15751 | .25 mid. 200 Volt Condenser |
| R2 | 50K ohm | R7 | 50K ohm | R15752 | .05 mid. 200 Volt Condenser |
| R3 | 15 Megohm | R8 | 15 Megohm | R15756 | .05 mid. 200 Volt Condenser |
| R4 | 100K ohm | R9 | 100K ohm | C44 | .002 mid. 400 Volt Condenser |
| R5 | 100K ohm | R10 | 100K ohm | C15754 | .01 mid. 300 Volt Condenser |
| R6 | 100K ohm | R11 | 100K ohm | C15754 | .006 mid. 400 Volt Condenser |
| R7 | 100K ohm | R12 | 100K ohm | C25 | .004 mid. 400 Volt Condenser |
| R8 | 100K ohm | R13 | 100K ohm | CM-31 | 80 mmid. Mica Condenser |
| R9 | 100K ohm | R14 | 100K ohm | CM-30 | 250 mmid. Mica Condenser |
| R10 | 100K ohm | R15 | 100K ohm | CE-66 | 75 mid. Electrolytic Condenser |
| R11 | 100K ohm | R16 | 100K ohm | CE-66 | 40 mid. Electrolytic Condenser |
| R12 | 100K ohm | R17 | 100K ohm | | |
| R13 | 100K ohm | R18 | 100K ohm | | |
| R14 | 100K ohm | R19 | 100K ohm | | |
| R15 | 100K ohm | R20 | 100K ohm | | |
| R16 | 100K ohm | R21 | 100K ohm | | |
| R17 | 100K ohm | R22 | 100K ohm | | |
| R18 | 100K ohm | R23 | 100K ohm | | |
| R19 | 100K ohm | R24 | 100K ohm | | |
| R20 | 100K ohm | R25 | 100K ohm | | |
| R21 | 100K ohm | R26 | 100K ohm | | |
| R22 | 100K ohm | R27 | 100K ohm | | |
| R23 | 100K ohm | R28 | 100K ohm | | |
| R24 | 100K ohm | R29 | 100K ohm | | |
| R25 | 100K ohm | R30 | 100K ohm | | |
| R26 | 100K ohm | R31 | 100K ohm | | |
| R27 | 100K ohm | R32 | 100K ohm | | |
| R28 | 100K ohm | R33 | 100K ohm | | |
| R29 | 100K ohm | R34 | 100K ohm | | |
| R30 | 100K ohm | R35 | 100K ohm | | |
| R31 | 100K ohm | R36 | 100K ohm | | |
| R32 | 100K ohm | R37 | 100K ohm | | |
| R33 | 100K ohm | R38 | 100K ohm | | |
| R34 | 100K ohm | R39 | 100K ohm | | |
| R35 | 100K ohm | R40 | 100K ohm | | |
| R36 | 100K ohm | R41 | 100K ohm | | |
| R37 | 100K ohm | R42 | 100K ohm | | |
| R38 | 100K ohm | R43 | 100K ohm | | |
| R39 | 100K ohm | R44 | 100K ohm | | |
| R40 | 100K ohm | R45 | 100K ohm | | |
| R41 | 100K ohm | R46 | 100K ohm | | |
| R42 | 100K ohm | R47 | 100K ohm | | |
| R43 | 100K ohm | R48 | 100K ohm | | |
| R44 | 100K ohm | R49 | 100K ohm | | |
| R45 | 100K ohm | R50 | 100K ohm | | |
| R46 | 100K ohm | R51 | 100K ohm | | |
| R47 | 100K ohm | R52 | 100K ohm | | |
| R48 | 100K ohm | R53 | 100K ohm | | |
| R49 | 100K ohm | R54 | 100K ohm | | |
| R50 | 100K ohm | R55 | 100K ohm | | |
| R51 | 100K ohm | R56 | 100K ohm | | |
| R52 | 100K ohm | R57 | 100K ohm | | |
| R53 | 100K ohm | R58 | 100K ohm | | |
| R54 | 100K ohm | R59 | 100K ohm | | |
| R55 | 100K ohm | R60 | 100K ohm | | |
| R56 | 100K ohm | R61 | 100K ohm | | |
| R57 | 100K ohm | R62 | 100K ohm | | |
| R58 | 100K ohm | R63 | 100K ohm | | |
| R59 | 100K ohm | R64 | 100K ohm | | |
| R60 | 100K ohm | R65 | 100K ohm | | |
| R61 | 100K ohm | R66 | 100K ohm | | |
| R62 | 100K ohm | R67 | 100K ohm | | |
| R63 | 100K ohm | R68 | 100K ohm | | |
| R64 | 100K ohm | R69 | 100K ohm | | |
| R65 | 100K ohm | R70 | 100K ohm | | |
| R66 | 100K ohm | R71 | 100K ohm | | |
| R67 | 100K ohm | R72 | 100K ohm | | |
| R68 | 100K ohm | R73 | 100K ohm | | |
| R69 | 100K ohm | R74 | 100K ohm | | |
| R70 | 100K ohm | R75 | 100K ohm | | |
| R71 | 100K ohm | R76 | 100K ohm | | |
| R72 | 100K ohm | R77 | 100K ohm | | |
| R73 | 100K ohm | R78 | 100K ohm | | |
| R74 | 100K ohm | R79 | 100K ohm | | |
| R75 | 100K ohm | R80 | 100K ohm | | |
| R76 | 100K ohm | R81 | 100K ohm | | |
| R77 | 100K ohm | R82 | 100K ohm | | |
| R78 | 100K ohm | R83 | 100K ohm | | |
| R79 | 100K ohm | R84 | 100K ohm | | |
| R80 | 100K ohm | R85 | 100K ohm | | |
| R81 | 100K ohm | R86 | 100K ohm | | |
| R82 | 100K ohm | R87 | 100K ohm | | |
| R83 | 100K ohm | R88 | 100K ohm | | |
| R84 | 100K ohm | R89 | 100K ohm | | |
| R85 | 100K ohm | R90 | 100K ohm | | |
| R86 | 100K ohm | R91 | 100K ohm | | |
| R87 | 100K ohm | R92 | 100K ohm | | |
| R88 | 100K ohm | R93 | 100K ohm | | |
| R89 | 100K ohm | R94 | 100K ohm | | |
| R90 | 100K ohm | R95 | 100K ohm | | |
| R91 | 100K ohm | R96 | 100K ohm | | |
| R92 | 100K ohm | R97 | 100K ohm | | |
| R93 | 100K ohm | R98 | 100K ohm | | |
| R94 | 100K ohm | R99 | 100K ohm | | |
| R95 | 100K ohm | R100 | 100K ohm | | |
| R96 | 100K ohm | R101 | 100K ohm | | |
| R97 | 100K ohm | R102 | 100K ohm | | |
| R98 | 100K ohm | R103 | 100K ohm | | |
| R99 | 100K ohm | R104 | 100K ohm | | |
| R100 | 100K ohm | R105 | 100K ohm | | |
| R101 | 100K ohm | R106 | 100K ohm | | |
| R102 | 100K ohm | R107 | 100K ohm | | |
| R103 | 100K ohm | R108 | 100K ohm | | |
| R104 | 100K ohm | R109 | 100K ohm | | |
| R105 | 100K ohm | R110 | 100K ohm | | |
| R106 | 100K ohm | R111 | 100K ohm | | |
| R107 | 100K ohm | R112 | 100K ohm | | |
| R108 | 100K ohm | R113 | 100K ohm | | |
| R109 | 100K ohm | R114 | 100K ohm | | |
| R110 | 100K ohm | R115 | 100K ohm | | |
| R111 | 100K ohm | R116 | 100K ohm | | |
| R112 | 100K ohm | R117 | 100K ohm | | |
| R113 | 100K ohm | R118 | 100K ohm | | |
| R114 | 100K ohm | R119 | 100K ohm | | |
| R115 | 100K ohm | R120 | 100K ohm | | |
| R116 | 100K ohm | R121 | 100K ohm | | |
| R117 | 100K ohm | R122 | 100K ohm | | |
| R118 | 100K ohm | R123 | 100K ohm | | |
| R119 | 100K ohm | R124 | 100K ohm | | |
| R120 | 100K ohm | R125 | 100K ohm | | |
| R121 | 100K ohm | R126 | 100K ohm | | |
| R122 | 100K ohm | R127 | 100K ohm | | |
| R123 | 100K ohm | R128 | 100K ohm | | |
| R124 | 100K ohm | R129 | 100K ohm | | |
| R125 | 100K ohm | R130 | 100K ohm | | |
| R126 | 100K ohm | R131 | 100K ohm | | |
| R127 | 100K ohm | R132 | 100K ohm | | |
| R128 | 100K ohm | R133 | 100K ohm | | |
| R129 | 100K ohm | R134 | 100K ohm | | |
| R130 | 100K ohm | R135 | 100K ohm | | |
| R131 | 100K ohm | R136 | 100K ohm | | |
| R132 | 100K ohm | R137 | 100K ohm | | |
| R133 | 100K ohm | R138 | 100K ohm | | |
| R134 | 100K ohm | R139 | 100K ohm | | |
| R135 | 100K ohm | R140 | 100K ohm | | |
| R136 | 100K ohm | R141 | 100K ohm | | |
| R137 | 100K ohm | R142 | 100K ohm | | |
| R138 | 100K ohm | R143 | 100K ohm | | |
| R139 | 100K ohm | R144 | 100K ohm | | |
| R140 | 100K ohm | R145 | 100K ohm | | |
| R141 | 100K ohm | R146 | 100K ohm | | |
| R142 | 100K ohm | R147 | 100K ohm | | |
| R143 | 100K ohm | R148 | 100K ohm | | |
| R144 | 100K ohm | R149 | 100K ohm | | |
| R145 | 100K ohm | R150 | 100K ohm | | |
| R146 | 100K ohm | R151 | 100K ohm | | |
| R147 | 100K ohm | R152 | 100K ohm | | |
| R148 | 100K ohm | R153 | 100K ohm | | |
| R149 | 100K ohm | R154 | 100K ohm | | |
| R150 | 100K ohm | R155 | 100K ohm | | |
| R151 | 100K ohm | R156 | 100K ohm | | |
| R152 | 100K ohm | R157 | 100K ohm | | |
| R153 | 100K ohm | R158 | 100K ohm | | |
| R154 | 100K ohm | R159 | 100K ohm | | |
| R155 | 100K ohm | R160 | 100K ohm | | |
| R156 | 100K ohm | R161 | 100K ohm | | |
| R157 | 100K ohm | R162 | 100K ohm | | |
| R158 | 100K ohm | R163 | 100K ohm | | |
| R159 | 100K ohm | R164 | 100K ohm | | |
| R160 | 100K ohm | R165 | 100K ohm | | |
| R161 | 100K ohm | R166 | 100K ohm | | |
| R162 | 100K ohm | R167 | 100K ohm | | |
| R163 | 100K ohm | R168 | 100K ohm | | |
| R164 | 100K ohm | R169 | 100K ohm | | |
| R165 | 100K ohm | R170 | 100K ohm | | |
| R166 | 100K ohm | R171 | 100K ohm | | |
| R167 | 100K ohm | R172 | 100K ohm | | |
| R168 | 100K ohm | R173 | 100K ohm | | |
| R169 | 100K ohm | R174 | 100K ohm | | |
| R170 | 100K ohm | R175 | 100K ohm | | |
| R171 | 100K ohm | R176 | 100K ohm | | |
| R172 | 100K ohm | | | | |