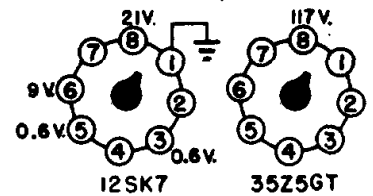
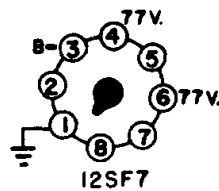
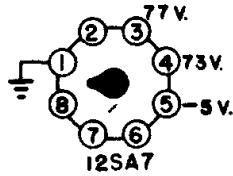


LEAR Model 661



ALL VOLTAGES SHOWN ARE D.C. MEASUREMENTS
TAKEN FROM B- WITH A 1000 OHM PER VOLT VOLT-
METER. SET OPERATING ON 117V, 60~ WITH VOLUME
CONTROL ON FULL AND BAND SWITCH IN BC. POSI-
TION.
ALLOW $\pm 10\%$ ON ALL MEASUREMENTS.



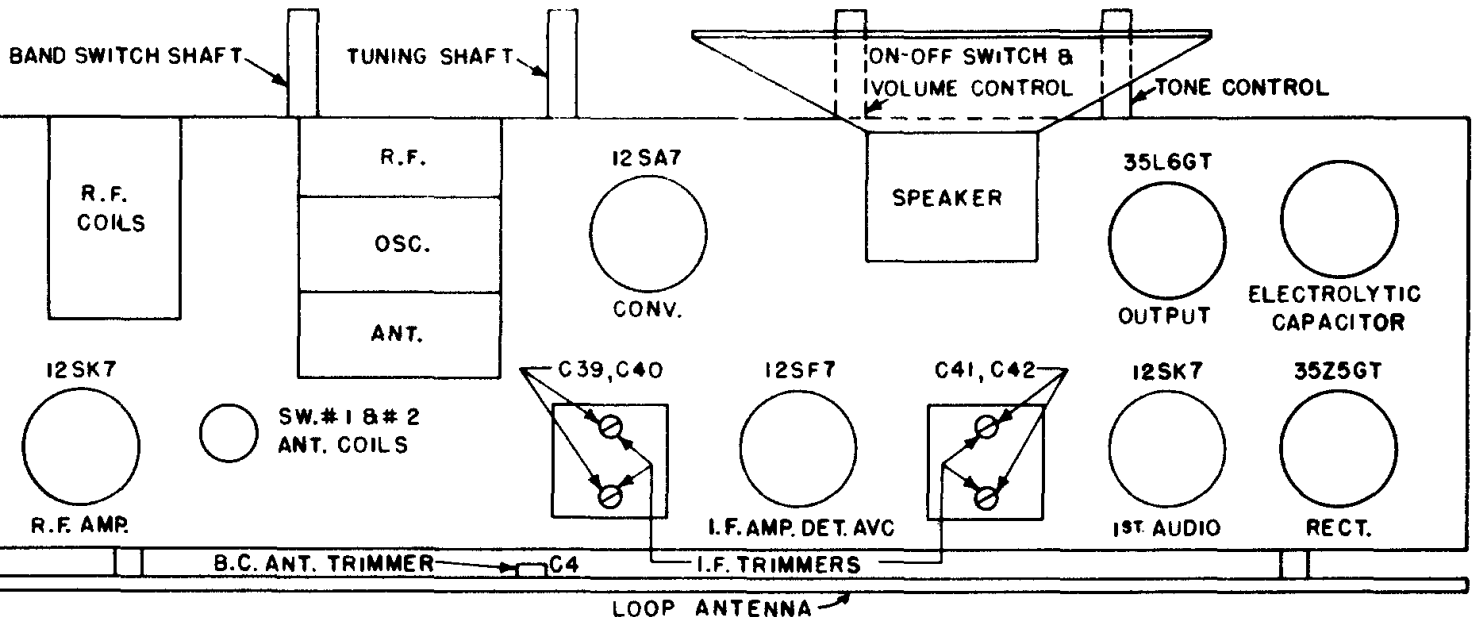
ALIGNMENT



ALIGNMENT OF	GENERATOR CONNECTED TO	DUMMY ANTENNA	GENERATOR FREQUENCY	BAND SWITCH SETTING	DIAL AND CONDENSER SETTING	TRIMMER	REMARKS
Set dial pointer to last mark at low frequency end of dial with gang condenser closed.							
2nd. IF	12SA7	.05 mf	455 KC	BC	open	C41 & C42	Max. Output
1st. IF	Grid & B-		1500 KC	BC	1500 KC	C39 & C40	Max. Output
BC	Ant. lead and B-	200 mmf.	600 KC	BC	600 KC	C13, C8, C4	Max. Output
Repeat operations 4 and 5 until alignment frequencies fall on correct calibration points.							Osc. Padder
SW 1	Ant. lead and B-	400 ohms (res.)	5 MC	1	5 MC	C15, C9, C5	Max. Output
			1800 KC		1800 KC		**
SW 2	Ant. lead and B-	400 ohms (res.)	16 MC	2	16 MC	C16*, C10, C6	Max. Output
			6 MC		6 MC		**

* Rock dial while trimming C16 at 16 MC

** check sensitivity and dial calibration



C5 \odot SW.#1 ANT.

C6 \odot SW.#2 ANT.

BACK VIEW OF CHASSIS

SW.#2 R.F. TRIMMER $\rightarrow \odot$ C10

SW.#1 R.F. TRIMMER $\rightarrow \odot$ C9

B.C. R.F. TRIMMER $\rightarrow \odot$ C8

TONE CONTROL \odot ON-OFF SWITCH & VOLUME CONTROL \odot

B.C. OSC. TRIMMER
C13 \odot

C14 \odot B.C. OSC. PADDER

SW.#2 OSC. \odot C16

C15 \odot SW.#1 OSC.

\odot BAND SWITCH SHAFT

FRONT VIEW OF CHASSIS