



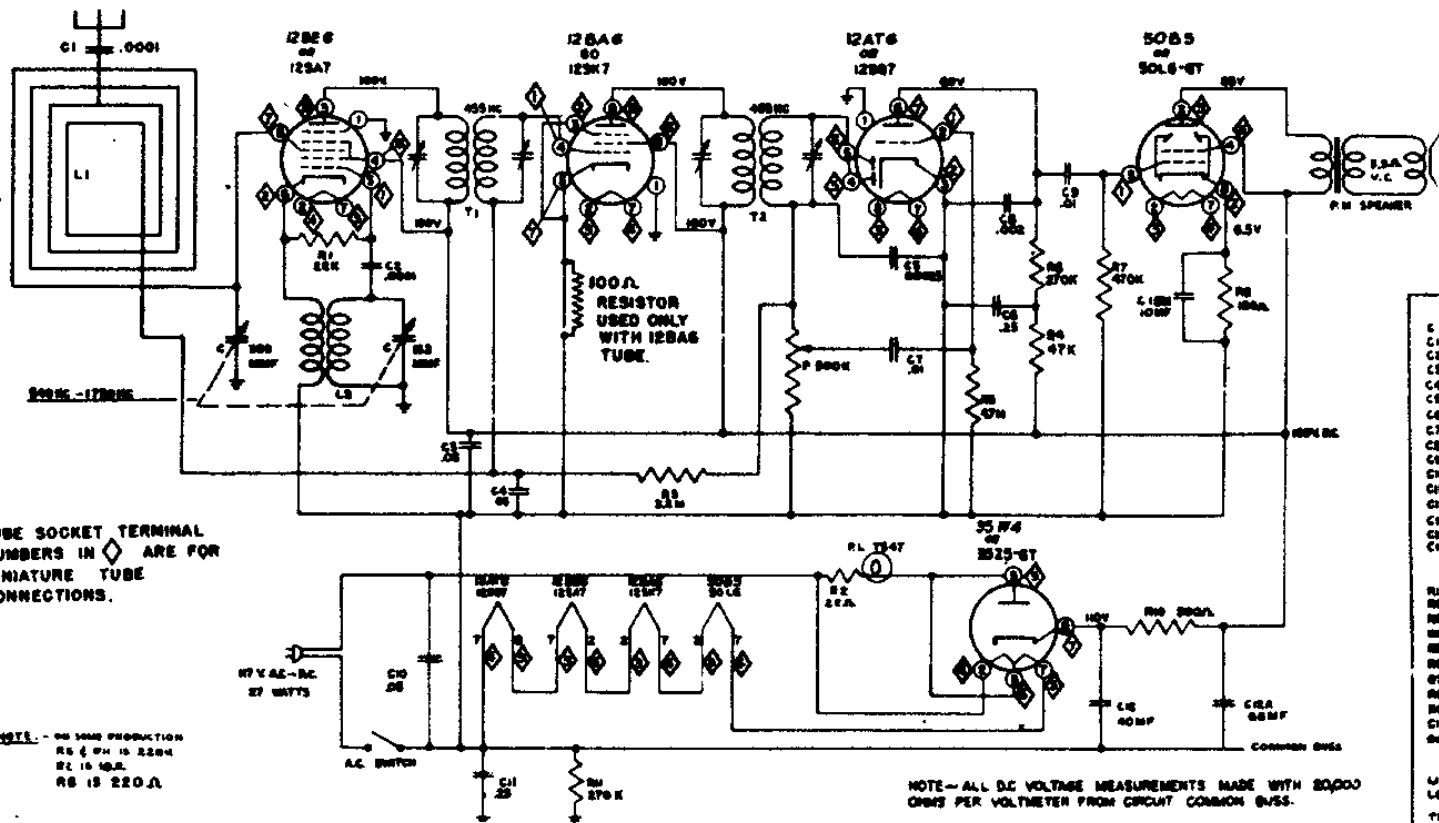
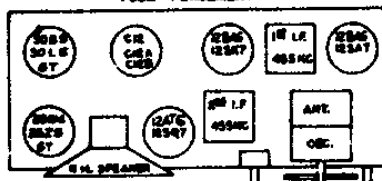
ALIGNMENT PROCEDURE -

1. SET CONDENSOR GANG TO FULL OPEN.
2. ADJUST DIAL POINTER TO DASH MARK UNDER 1700 KC.
3. SPACE LOOP 1 1/2 INCHES FROM CHASSIS.
4. CONNECT SIGNAL GENERATOR OUTPUT LEAD TO ANTENNA CONNECTION ON LOOP IN SERIES WITH .00005 (50MMH) CONDENSER.
5. SET SIGNAL GENERATOR TO 455 KC. THEN ADJUST I.F. TRIMMERS FOR PEAK RESPONSE INDICATED BY OUTPUT METER CONNECTED TO SPEAKER WIRE COIL TERMINALS. FINAL ADJUSTMENT MADE WITH VOLUME CONTROL FULL ON & SIGNAL GENERATOR OUTPUT ADJUSTED TO GIVE OUTPUT METER READING OF 75 VOLT A.C. MAXIMUM.
6. SET SIGNAL GENERATOR TO 1500 KC. TURN TUNING KNOB TO SET POINTERS ON 1500 KC. THEN ADJUST OSCILLATOR TRIMMER FOR MAXIMUM RESPONSE ON OUTPUT METER. NOW ADJUST R.F. TRIMMER FOR MAXIMUM INDICATION ON OUTPUT METER.
7. INSTALL CHASSIS IN CABINET. MAKE CERTAIN LOOP DOES NOT AGENT BACK OF CABINET.

TUBE SOCKET TERMINAL NUMBERS IN \diamond ARE FOR MINIATURE TUBE CONNECTIONS.

NOTE - ON SOME PRODUCTION RS 4 OH IS 220K
R2 IS 10.5K
R5 IS 220K

TUBE PLACEMENT



NOTE - ALL D.C. VOLTAGE MEASUREMENTS MADE WITH 20,000 OHMS PER VOLT METER FROM CIRCUIT COMMON GND.

CONDENSERS

C	CONDENSER	5000-10000	1000-5000	500-1000	100-500	10-100	1-10	0.1-1	0.01-0.1	0.001-0.01	0.0001-0.001
C1	5000	5000	5000	5000	5000	5000	5000	5000	5000	5000	5000
C2	5000	5000	5000	5000	5000	5000	5000	5000	5000	5000	5000
C3	5000	5000	5000	5000	5000	5000	5000	5000	5000	5000	5000
C4	5000	5000	5000	5000	5000	5000	5000	5000	5000	5000	5000
C5	5000	5000	5000	5000	5000	5000	5000	5000	5000	5000	5000
C6	5000	5000	5000	5000	5000	5000	5000	5000	5000	5000	5000
C7	5000	5000	5000	5000	5000	5000	5000	5000	5000	5000	5000
C8	5000	5000	5000	5000	5000	5000	5000	5000	5000	5000	5000
C9	5000	5000	5000	5000	5000	5000	5000	5000	5000	5000	5000
C10	5000	5000	5000	5000	5000	5000	5000	5000	5000	5000	5000
C11	5000	5000	5000	5000	5000	5000	5000	5000	5000	5000	5000
C12	5000	5000	5000	5000	5000	5000	5000	5000	5000	5000	5000
C13	5000	5000	5000	5000	5000	5000	5000	5000	5000	5000	5000
C14	5000	5000	5000	5000	5000	5000	5000	5000	5000	5000	5000
C15	5000	5000	5000	5000	5000	5000	5000	5000	5000	5000	5000
C16	5000	5000	5000	5000	5000	5000	5000	5000	5000	5000	5000
C17	5000	5000	5000	5000	5000	5000	5000	5000	5000	5000	5000
C18	5000	5000	5000	5000	5000	5000	5000	5000	5000	5000	5000
C19	5000	5000	5000	5000	5000	5000	5000	5000	5000	5000	5000
C20	5000	5000	5000	5000	5000	5000	5000	5000	5000	5000	5000
C21	5000	5000	5000	5000	5000	5000	5000	5000	5000	5000	5000
C22	5000	5000	5000	5000	5000	5000	5000	5000	5000	5000	5000
C23	5000	5000	5000	5000	5000	5000	5000	5000	5000	5000	5000
C24	5000	5000	5000	5000	5000	5000	5000	5000	5000	5000	5000
C25	5000	5000	5000	5000	5000	5000	5000	5000	5000	5000	5000
C26	5000	5000	5000	5000	5000	5000	5000	5000	5000	5000	5000
C27	5000	5000	5000	5000	5000	5000	5000	5000	5000	5000	5000
C28	5000	5000	5000	5000	5000	5000	5000	5000	5000	5000	5000
C29	5000	5000	5000	5000	5000	5000	5000	5000	5000	5000	5000
C30	5000	5000	5000	5000	5000	5000	5000	5000	5000	5000	5000
C31	5000	5000	5000	5000	5000	5000	5000	5000	5000	5000	5000
C32	5000	5000	5000	5000	5000	5000	5000	5000	5000	5000	5000
C33	5000	5000	5000	5000	5000	5000	5000	5000	5000	5000	5000
C34	5000	5000	5000	5000	5000	5000	5000	5000	5000	5000	5000
C35	5000	5000	5000	5000	5000	5000	5000	5000	5000	5000	5000
C36	5000	5000	5000	5000	5000	5000	5000	5000	5000	5000	5000
C37	5000	5000	5000	5000	5000	5000	5000	5000	5000	5000	5000
C38	5000	5000	5000	5000	5000	5000	5000	5000	5000	5000	5000
C39	5000	5000	5000	5000	5000	5000	5000	5000	5000	5000	5000
C40	5000	5000	5000	5000	5000	5000	5000	5000	5000	5000	5000
C41	5000	5000	5000	5000	5000	5000	5000	5000	5000	5000	5000
C42	5000	5000	5000	5000	5000	5000	5000	5000	5000	5000	5000
C43	5000	5000	5000	5000	5000	5000	5000	5000	5000	5000	5000
C44	5000	5000	5000	5000	5000	5000	5000	5000	5000	5000	5000
C45	5000	5000	5000	5000	5000	5000	5000	5000	5000	5000	5000
C46	5000	5000	5000	5000	5000	5000	5000	5000	5000	5000	5000
C47	5000	5000	5000	5000	5000	5000	5000	5000	5000	5000	5000
C48	5000	5000	5000	5000	5000	5000	5000	5000	5000	5000	5000
C49	5000	5000	5000	5000	5000	5000	5000	5000	5000	5000	5000
C50	5000	5000	5000	5000	5000	5000	5000	5000	5000	5000	5000
C51	5000	5000	5000	5000	5000	5000	5000	5000	5000	5000	5000
C52	5000	5000	5000	5000	5000	5000	5000	5000	5000	5000	5000
C53	5000	5000	5000	5000	5000	5000	5000	5000	5000	5000	5000
C54	5000	5000	5000	5000	5000	5000	5000	5000	5000	5000	5000
C55	5000	5000	5000	5000	5000	5000	5000	5000	5000	5000	5000
C56	5000	5000	5000	5000	5000	5000	5000	5000	5000	5000	5000
C57	5000	5000	5000	5000	5000	5000	5000	5000	5000	5000	5000
C58	5000	5000	5000	5000	5000	5000	5000	5000	5000	5000	5000
C59	5000	5000	5000	5000	5000	5000	5000	5000	5000	5000	5000
C60	5000	5000	5000	5000	5000	5000	5000	5000	5000	5000	5000
C61	5000	5000	5000	5000	5000	5000	5000	5000	5000	5000	5000
C62	5000	5000	5000	5000	5000	5000	5000	5000	5000	5000	5000
C63	5000	5000	5000	5000	5000	5000	5000	5000	5000	5000	5000
C64	5000	5000	5000	5000	5000	5000	5000	5000	5000	5000	5000
C65	5000	5000	5000	5000	5000	5000	5000	5000	5000	5000	5000
C66	5000	5000	5000	5000	5000	5000	5000	5000	5000	5000	5000
C67	5000	5000	5000	5000	5000	5000	5000	5000	5000	5000	5000
C68	5000	5000	5000	5000	5000	5000	5000	5000	5000	5000	5000
C69	5000	5000	5000	5000	5000	5000	5000	5000	5000	5000	5000
C70	5000	5000	5000	5000	5000	5000	5000	5000	5000	5000	5000
C71	5000	5000	5000	5000	5000	5000	5000	5000	5000	5000	5000
C72	5000	5000	5000	5000	5000	5000	5000	5000	5000	5000	5000
C73	5000	5000	5000	5000	5000	5000	5000	5000	5000	5000	5000
C74	5000	5000	5000	5000	5000	5000	5000	5000	5000	5000	5000
C75	5000	5000	5000	5000	5000	5000	5000	5000	5000	5000	5000
C76	5000	5000	5000	5000	5000	5000	5000	5000	5000	5000	5000
C77	5000	5000	5000	5000	5000	5000	5000	5000	5000	5000	5000
C78	5000	5000	5000	5000	5000	5000	5000	5000	5000	5000	5000
C79	5000	5000	5000	5000	5000	5000	5000	5000	5000	5000	5000
C80	5000	5000	5000	5000	5000	5000	5000	5000	5000	5000	5000
C81	5000	5000	5000	5000	5000	5000	5000	5000	5000	5000	5000
C82	5000	5000	5000	5000	5000	5000	5000	5000	5000	5000	5000
C83	5000	5000	5000	5000	5000	5000	5000	5000	5000	5000	5000
C84	5000	5000	5000	5000	5000	5000	5000	5000	5000	5000	5000
C85	5000	5000	5000	5000	5000	5000	5000	5000	5000	5000	5000
C86	5000	5000	5000	5000	5000	5000	5000	5000	5000	5000	5000
C87	5000	5000	5000	5000	5000	5000	5000	5000	5000	5000	5000
C88	5000	5000	5000	5000	5000	5000	5000	5000	5000	5000	5000
C89	5000	5000	5000	5000	5000	5000	5000	5000	5000	5000	5000
C90	5000	5000	5000	5000	5000	5000	5000	5000	5000	5000	5000
C91	5000	5000	5000	5000	5000	5000	5000	5000	5000	5000	5000
C92	5000	5000	5000	5000	5000	5000	5000	5000	5000	5000	5000
C93	5000	5000	5000	5000	5000	5000	5000	5000	5000	5000	5000

RESISTORS: 20%