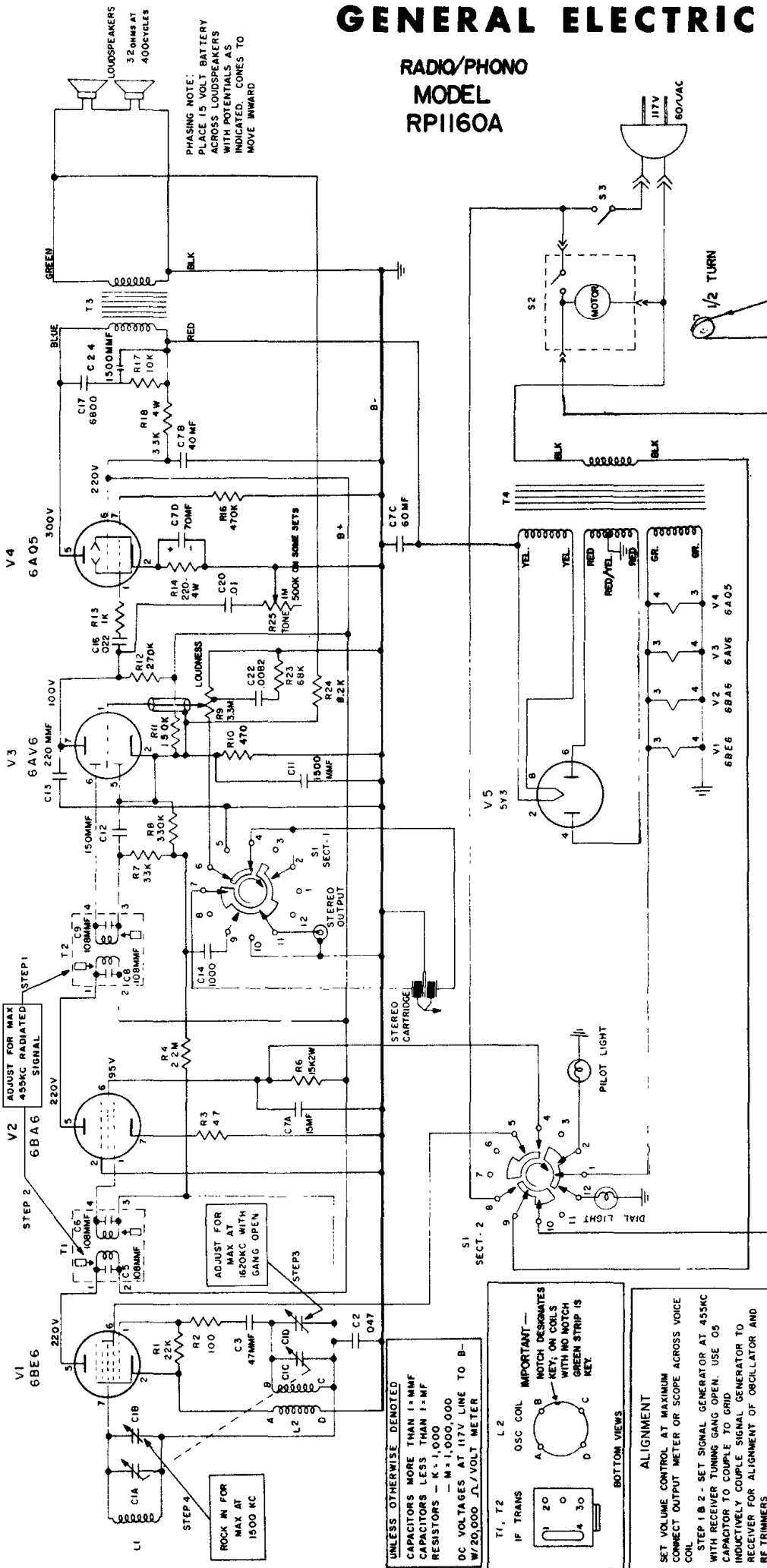


# GENERAL ELECTRIC

## RADIO/PHONO MODEL RP1160A

PHASING NOTE:  
PLACE 15 VOLT BATTERY  
ACROSS LOUSPEAKERS  
WITH POTENTIALS AS  
INDICATED. CONES TO  
MOVE INWARD

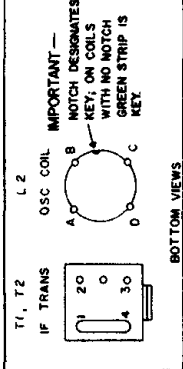


6. Remove grille by sliding out and down from bottom, be careful not to break speaker and antenna wires.
7. Remove compartment light from antenna bracket.
8. Remove antenna screws from brackets.
9. Remove screws from top and bottom of metal chassis front plate. (It is not necessary to remove plastic dial assembly from chassis front plate.)
10. Turn clips on bottom of the shipping screws parallel to the screws.
11. Lift record changer free of mounting board.
12. Remove screw holding electrolytic.
13. Disconnect plug.
14. Unsolder and label the shielded signal wires (that go to the Stereo-Mono-Radio switch) from the terminal board on bottom of changer.
15. Loosen nuts holding power transformer mounting plate and slide chassis, electrolytic, antenna and compartment light out the front.

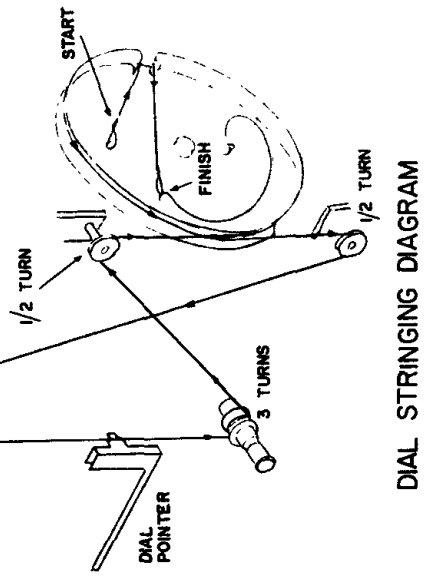
1. Open cabinet lid.
  2. Remove screws holding vent panel cover and interlock.
  3. Remove vent panel cover (interlock is automatically disconnected.)
- ### TO REMOVE CHASSIS
1. Follow steps 1 through 3 as above.
  2. Remove knobs.
  3. Remove screws holding ventilated speaker compartment panel, remove panel.
  4. Remove screws holding interlock connector.
  5. Remove screws (holding grille bottom and chassis) from bottom of cabinet.

### TO REPLACE TUBES

**ALIGNMENT**  
SET VOLUME CONTROL AT MAXIMUM  
CONNECT OUTPUT METER OR SCOPE ACROSS VOICE COIL  
STEP 1 B 2 - SET SIGNAL GENERATOR AT 455KC WITH RECEIVER TUNING GANG OPEN. USE O5 CAPACITOR TO COUPLE TO GRID  
INDUCTIVELY COUPLE SIGNAL GENERATOR TO RECEIVER FOR ALIGNMENT OF OSCILLATOR AND RF TRIMMERS  
STEP 3 - SET SIGNAL GENERATOR AT 1620KC WITH RECEIVER TUNING GANG OPEN  
STEP 4 - SET SIGNAL GENERATOR AT 1500KC. TUNE RECEIVER TO 1500KC ON DIAL (SEE ABOVE STEPS)



UNLESS OTHERWISE DENOTED  
CAPACITORS MORE THAN 1 μF MMF  
CAPACITORS LESS THAN 1 μF  
RESISTORS - K = 1,000  
- M = 1,000,000  
DC VOLTAGES AT 117V LINE TO B-  
W/20,000 Ω/VOLT METER



DIAL STRINGING DIAGRAM