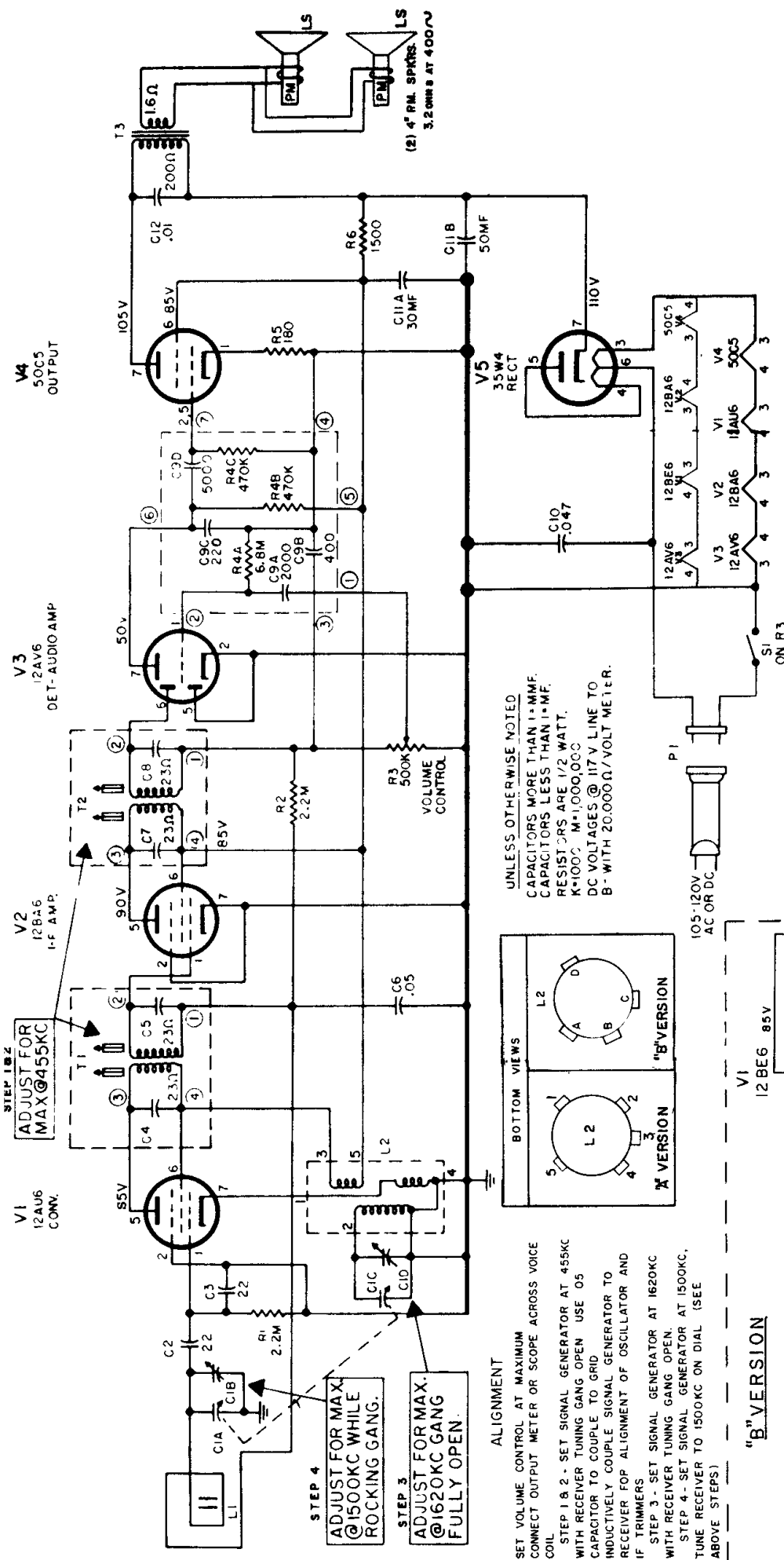


GENERAL ELECTRIC COMPANY

MODEL S
T105A
T106A,B
T107B



TO REMOVE CHASSIS FROM CABINET

To remove chassis from cabinet, remove cabinet back. Unsolder the output transformer leads from the speaker. Remove the four self-tapping screws, (hex heads) one on each corner of the chassis, and the single hex screw just below the tuning gang capacitor Pull off the volume control knob. The tuning control knob is held to the cabinet, so the chassis must be pulled out of the cabinet, at the same time pulling it off the tuning knob, which remains on the cabinet. When pulling out the chassis, it is best to grasp the tuning capacitor (C1) by the thumb and forefinger of one hand, the tuning knob by the other hand and pull.

CAUTION: It is important to use extreme care replacing parts and/or soldering on this chassis. Too much heat on the chassis will cause the copper plating to become unbonded. Only apply the soldering iron long enough to melt the solder and pull out the part to be replaced.

"B" VERSION

