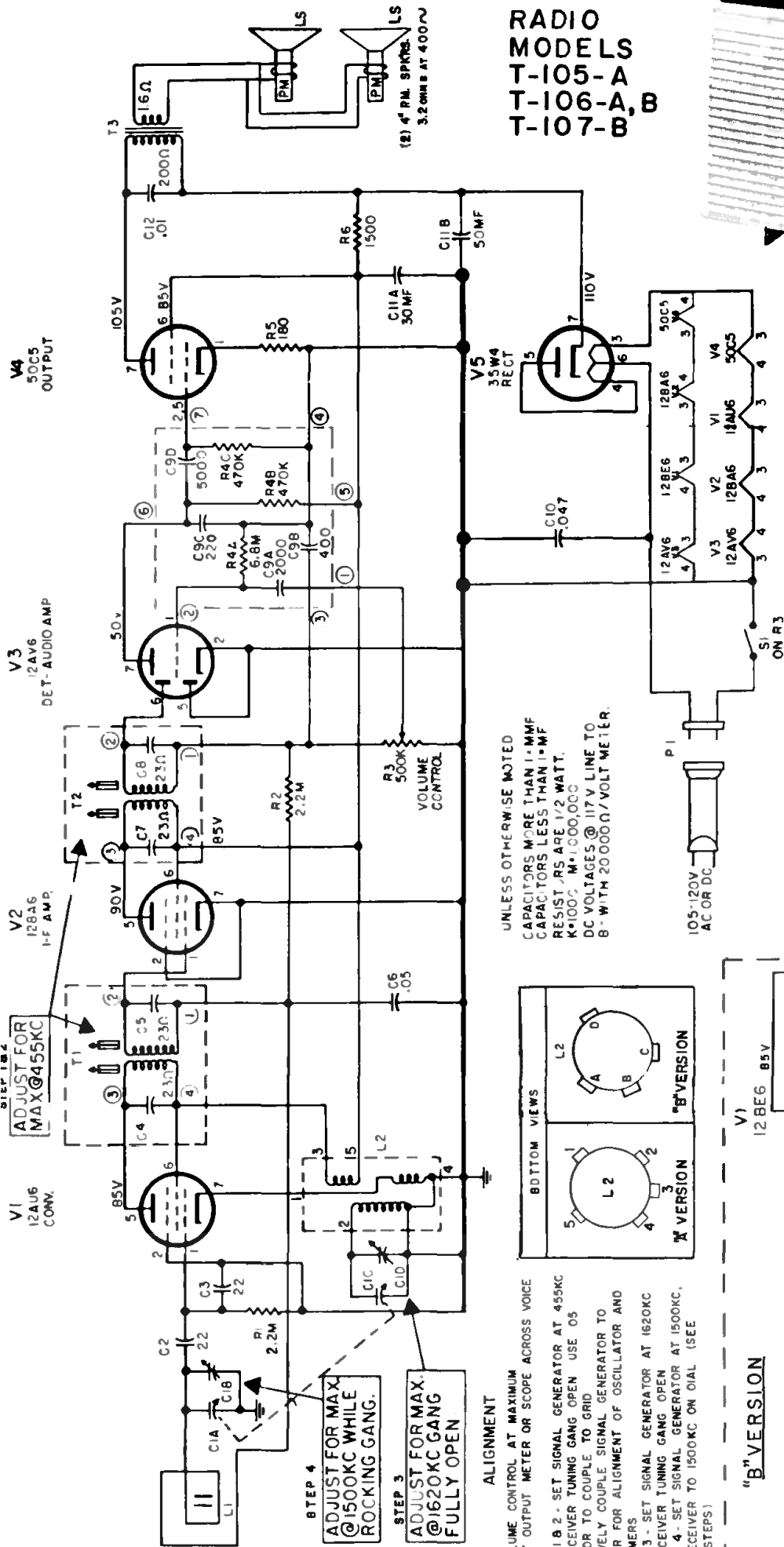
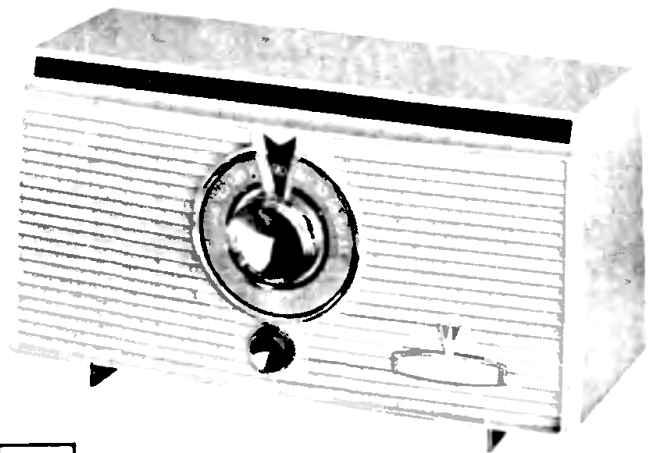


GENERAL ELECTRIC

RADIO
MODELS
T-105-A
T-106-A,B
T-107-B



The "A" and "B" versions of this set differ in the oscillator-converter circuitry.

TO REMOVE CHASSIS

To remove chassis from cabinet, remove cabinet back. Unsolder the output transformer leads from the speaker. Remove the four hex-head screws at each corner of the chassis, and the single hex-head screw below the tuning capacitor. The tuning knob is a captive knob and remains in the cabinet front. After removing volume control knob, close the tuning capacitor to prevent any possible damage to the plates. Remove chassis by holding tuning knob with one hand, while grasping tuning capacitor by the thumb and forefinger of the other hand and pull.

ALIGNMENT

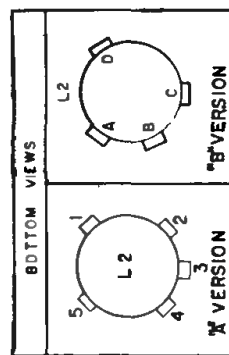
SET VOLUME CONTROL AT MAXIMUM
CONNECT OUTPUT METER OR SCOPE ACROSS VOICE COIL

STEP 1 2 - SET SIGNAL GENERATOR AT 455KC WITH RECEIVER TUNING GANG OPEN USE 05 CAPACITOR TO COUPLE TO GRID

STEP 2 4 - SET SIGNAL GENERATOR TO INDUCTIVELY COUPLE SIGNAL GENERATOR TO RECEIVER FOR ALIGNMENT OF OSCILLATOR AND IF TRIMMERS

STEP 3 3 - SET SIGNAL GENERATOR AT 1620KC WITH RECEIVER TUNING GANG OPEN

STEP 4 - SET SIGNAL GENERATOR AT 1500KC. TUNE RECEIVER TO 1500KC ON DIAL (SEE ABOVE STEPS)



"B" VERSION

