

# GENERAL ELECTRIC COMPANY

Models RP1120A, RP1120B

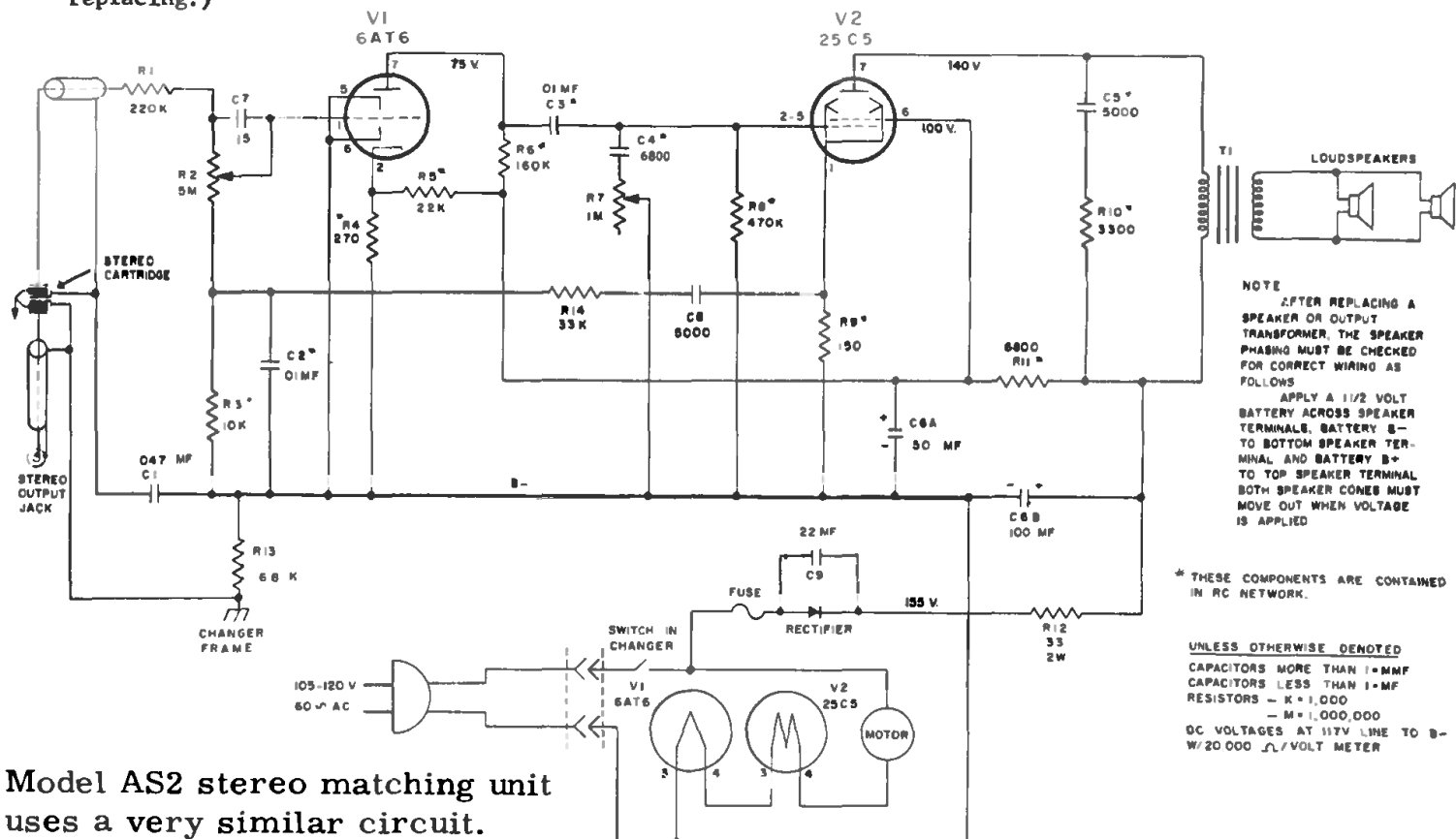
## TO REPLACE TUBES

1. Open cabinet lid.
2. Remove screws holding vent panel board and interlock.
3. Remove vent panel board (interlock is automatically disconnected.)

## TO REMOVE AMPLIFIER CHASSIS

1. Follow steps 1 through 3 as above.
2. Remove loudness and tone knobs.
3. Loosen screws on interlock bracket; slide interlock out of mounting slot. (Mark location of bracket on cabinet before removing so that bracket can be "keyed" to correct location when replacing.)

4. Remove the three hexhead nuts from screws on cabinet brace above speakers and the three hexhead nuts from screws on cabinet brace under speakers.
  5. Lift out grille (with all electronic components) and place down in front of cabinet carefully.
  6. Unscrew two clamps holding wires from chassis to changer.
  7. Remove amplifier chassis by unscrewing the three screws holding chassis to grille.
- Before replacing knobs, turn control shafts fully counterclockwise; press on knobs with the knob indicator dot to the left of center at the bottom.



Model AS2 stereo matching unit uses a very similar circuit.

