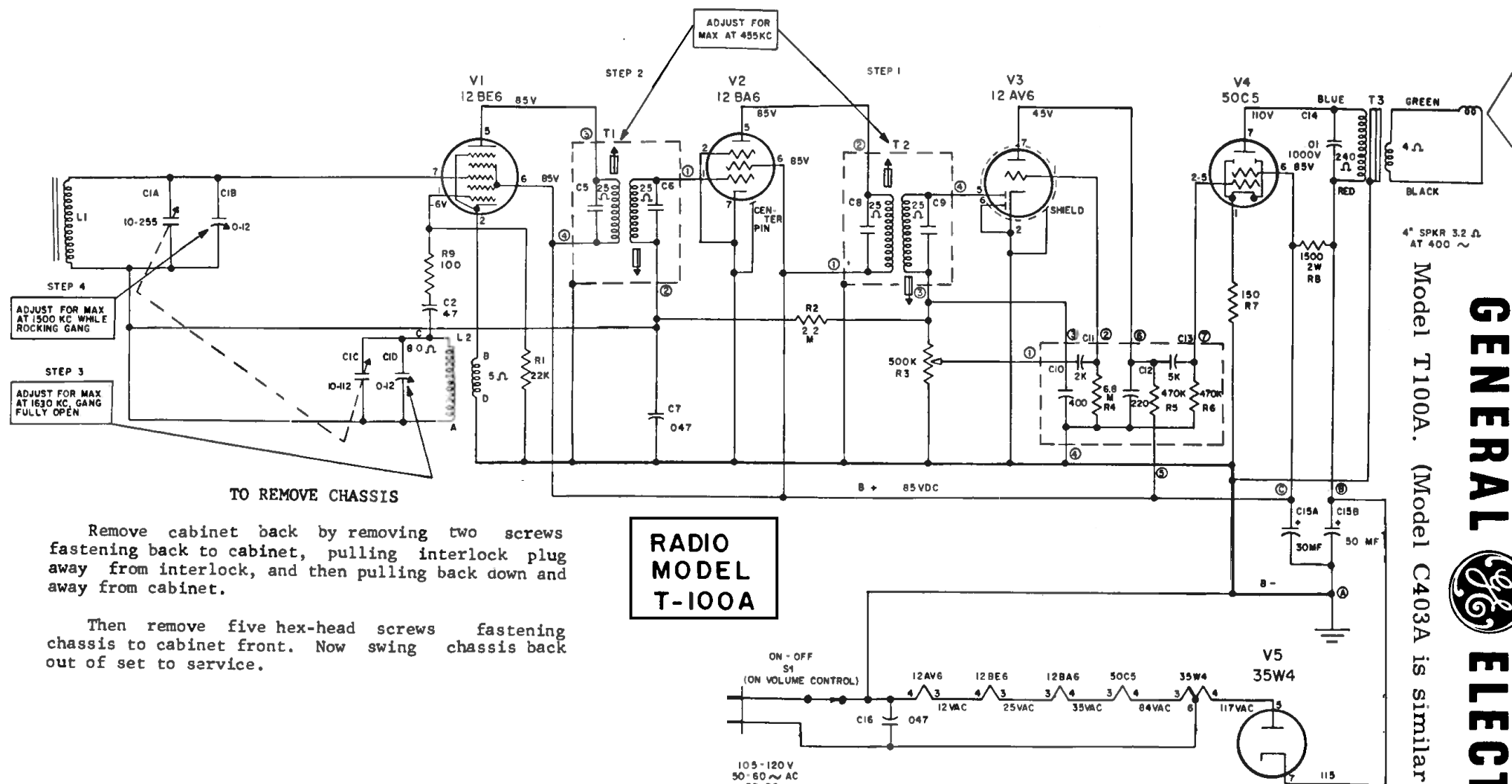


GENERAL ELECTRIC

Model T100A. (Model C403A is similar except for clock)

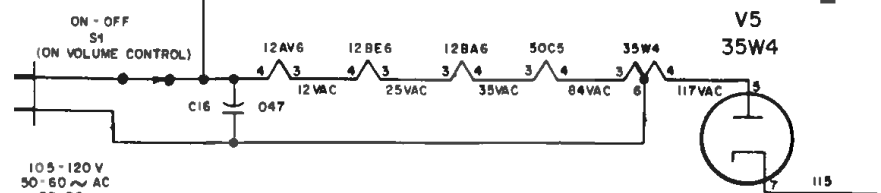


RADIO MODEL T-100A

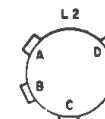
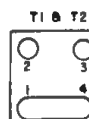
TO REMOVE CHASSIS

Remove cabinet back by removing two screws fastening back to cabinet, pulling interlock plug away from interlock, and then pulling back down and away from cabinet.

Then remove five hex-head screws fastening chassis to cabinet front. Now swing chassis back out of set to service.



BOTTOM VIEWS



UNLESS OTHERWISE DENOTED

CAPACITORS MORE THAN 1 mmf

CAPACITORS LESS THAN 1 mmf

RESISTORS - K=1,000

- M=1,000,000

DC VOLTAGES AT 117V LINE TO B-

W/20,000 ohm VOLT METER

ALIGNMENT

SET VOLUME CONTROL AT MAXIMUM
CONNECT OUTPUT METER OR SCOPE ACROSS
VOICE COIL
INDUCTIVELY COUPLE SIGNAL GENERATOR
TO RECEIVER
STEP 1 & 2- SET SIG. GEN AT 455 KC, WITH
RECEIVER TUNING GANG OPEN
STEP 3- SET SIG. GEN AT 1630 KC WITH
RECEIVER TUNING GANG OPEN
STEP 4- SET SIG. GEN AT 1500 KC, TUNE
RECEIVER TO 1500 KC