

ALL CONDENSER ARE MMFD  
UNLESS OTHERWISE SPECIFIED

Ⓐ = 25 VOLTS	Ⓛ = 100 VOLTS	Ⓒ = 200 VOLTS
Ⓑ = 300 VOLTS	Ⓜ = 350 VOLTS	Ⓓ = 400 VOLTS
Ⓔ = 500 VOLTS	Ⓝ = 600 VOLTS	Ⓕ = 1800 VOLTS

FOR RESISTORS: K = 1000  $\Omega$ , E.S. = MEGOHM  
ALL RESISTORS ARE 1/2 WATT  $\pm$  20% UNLESS  
OTHERWISE SPECIFIED

Ⓢ DESIGNATES CHASSIS GROUND  
ALL TUBE SOCKETS ARE BOTTOM VIEWS

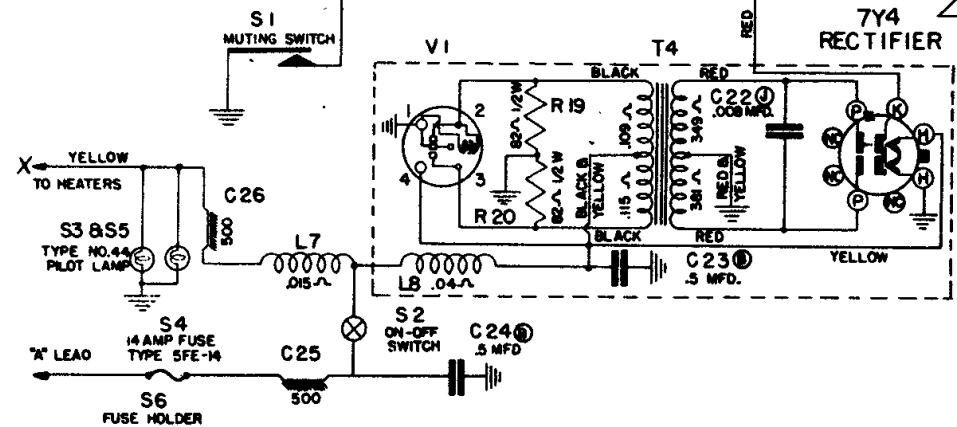
**STAGE GAINS**  
TAKEN AT ANT. SOCKET AT R.F. GRID AT 600 KC. &  
TAKEN AT CONV. GRID AT 265 KC.

**DUMMY ANTENNA**  
30 MMFD. SERIES & 30 MMFD. SHUNT AT ANTENNA  
SOCKET & 0.1 MFD. SERIES TO CONVERTER GRID

**BATTERY CONDITIONS**  
6.3 VOLTS AT STORAGE BATTERY TERMINALS WITH  
POSITIVE GROUNDING

**TEST CONDITIONS**  
VOLUME CONTROL SET AT MAXIMUM TONE CONTROL SET  
ON "HIGH" WITH NO INCOMING SIGNAL

VOLTAGES TO READ FROM POINT SHOWN TO CHASSIS  
WITH 1000 OHM PER VOLT METER



SCHEMATIC DIAGRAM FOR 6 TUBE

HUDSON 6MHB89

I.F. 265 KC.  
TUNING RANGE 540 KC. TO 1600 KC.  
ZENITH RADIO CORPORATION

HUDSON AUTOMOBILE RECEIVER

MODEL 6MH889—CHASSIS 6E89

**ZENITH**  
"LONG DISTANCE" AUTO RADIO