

INTERNATIONAL HARVESTER
244079-R91
244113-R91

POWER TRANSISTOR CURRENT ADJUSTMENT - After replacing a power transistor, measure the collector current of BOTH power transistors and adjust for proper operation.

R18 is used to limit total collector current. In most sets it is a piece of copper wire; in a few sets it is a 1/2 watt carbon resistor, either 27 or 56 ohms.

With 14V input to the radio "A" lead, the total collector current should not exceed 340 ma or be less than 150 ma. When 12.6V is applied to the radio "A" lead, the total collector current must not exceed 260 ma or be less than 120 ma. If the total collector current does not fall within these limits, change the value of R18 as required.

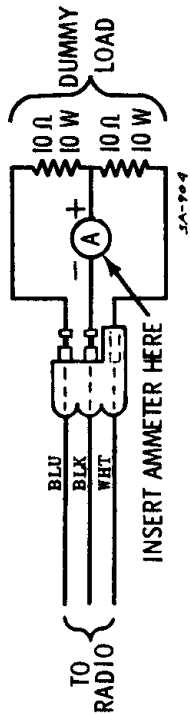
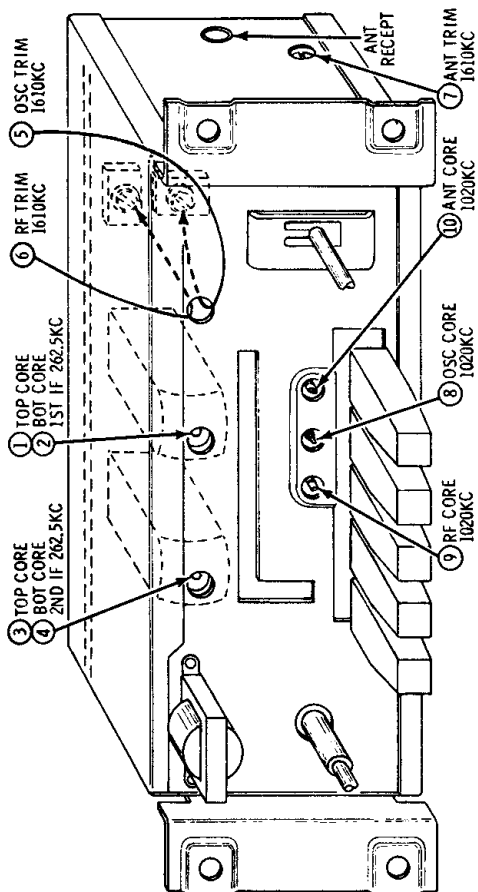
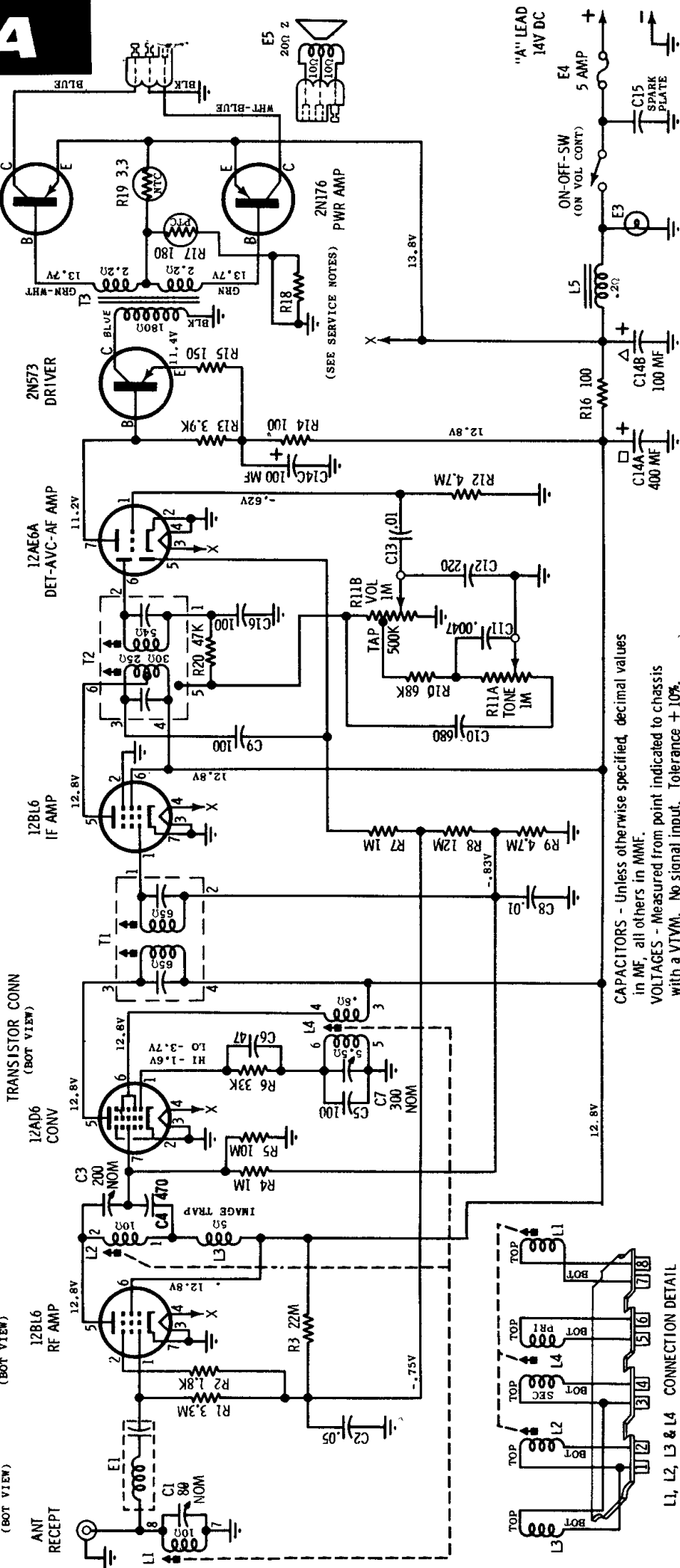


ILLUSTRATION - ADJUSTING TRANSISTOR CURRENT OR OPERATING SET WITHOUT SPEAKER



ALIGNMENT POINT LOCATION DETAIL



CAPACITORS - Unless otherwise specified, decimal values in MF, all others in MME.

L1, L2, L3 & L4 CONNECTION DETAIL