

HALLICRAFTERS, INC.

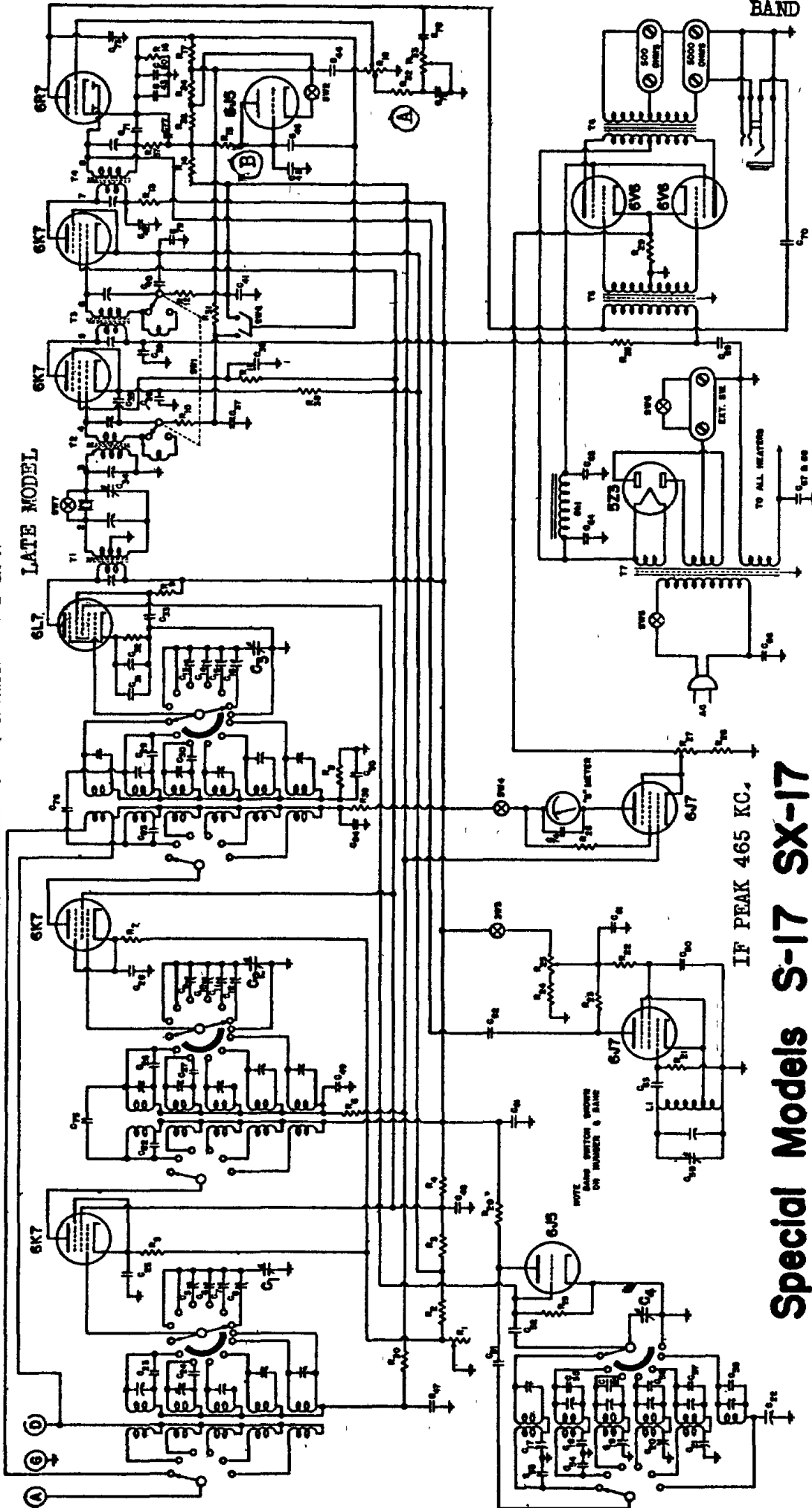
MODELS S-17, SX-17 Late
Super Skyriders

BAND 1. 545 KC to 1,555 KC
2. 1,545 KC to 4,500 KC

BAND 3. 4.2 MC to 10.2 MC
4. 9.8 MC to 20.5 MC
5. 19.00 MC to 36.00 MC
6. 35.00 MC to 62.00 MC

SCHEMATIC DIAGRAM - SUPER SKYRIDER - TYPE SX-17

LATE MODEL



Special Models S-17 SX-17

CHANGES FOUND IN SOME LATE MODELS SUPERCEDING THE ABOVE SCHEMATIC DIAGRAM.

An .0005 600v condenser connected across the 6V6 grids with connection between the end and R33 and the junction of R 32 - C72 as shown, FIG.1. Also the use of 6H6 tube as shown in Fig. 2, instead of 6J5 as Noise Limiter. Also capacitor and Resistor values as follows;
C78 .1 mfd. 600v. R 32 60M ohms.
R29 400 ohms 2watts. R 33 200 M ohms.

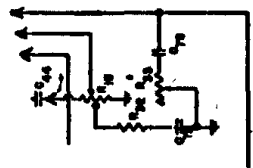


FIG. 1

SEE (A) ABOVE

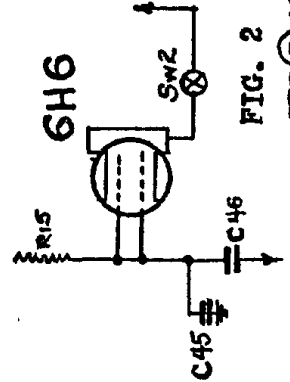


FIG. 2

SEE (B) ABOVE