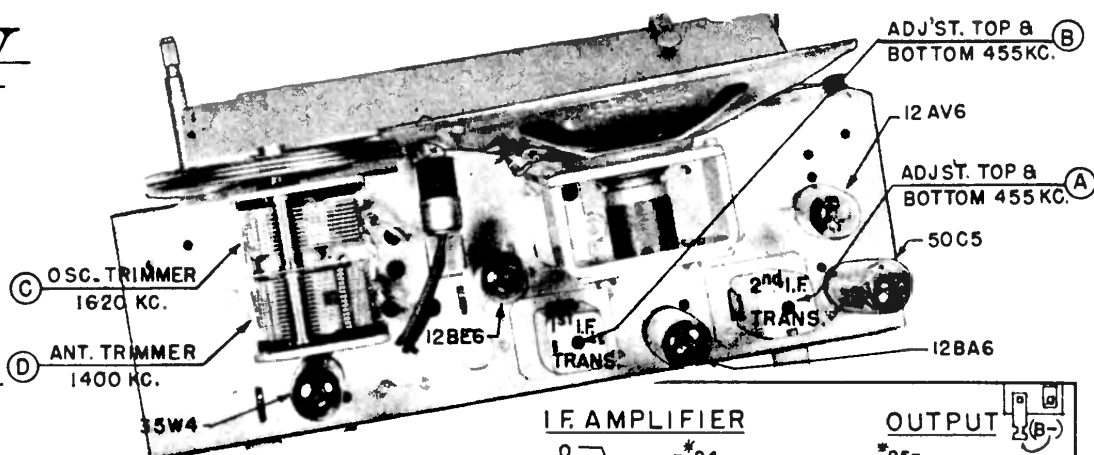
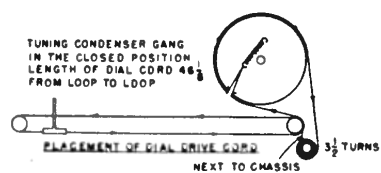


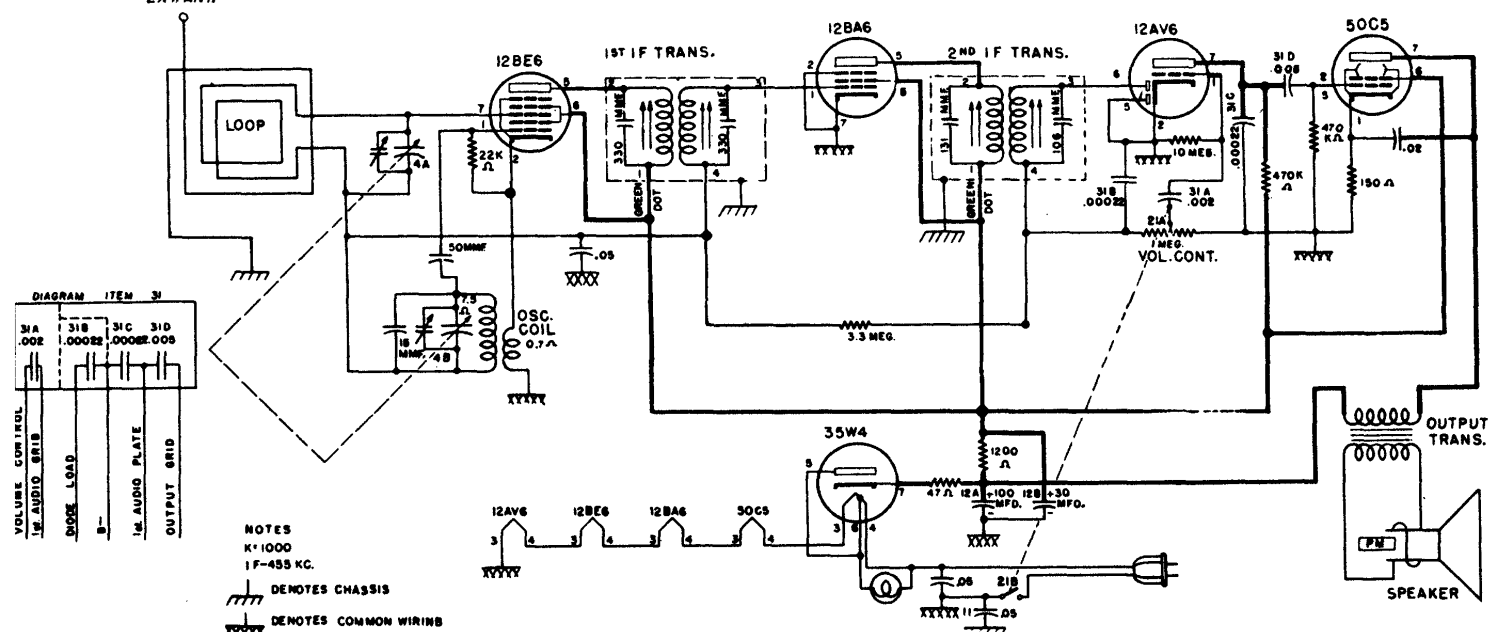
MODELS 9-113, 9-114W



1. BOTTOM VIEW OF TUBE SOCKETS.
2. VOLTAGE MEASURED WITH AN ELECTRONIC VOLTMMETER FROM SOCKET LUG TO B-.
3. LINE VOLTAGE 117 V. 60 CYCLE.
4. NC=NO CONNECTION.
5. W.J.= WIRING JUNCTION.
6. * = AC.VOLTAGE.
7. SOCKET VOLTAGE TOLERANCE 10%.

Alignment Sequence	Signal Generator Output			Position of Tuning Cond.	Adjust for Maximum Output
	Frequency in kc.	In Series with	To		
1	455	200 mmf.	High Side of Loop	Open	A & B
2	1620	*Radiated to Loop		Open	C
3	1400	*Radiated to Loop		Tune to Signal	D

EXT. ANT.



SCHEMATIC DIAGRAM (Second Production)