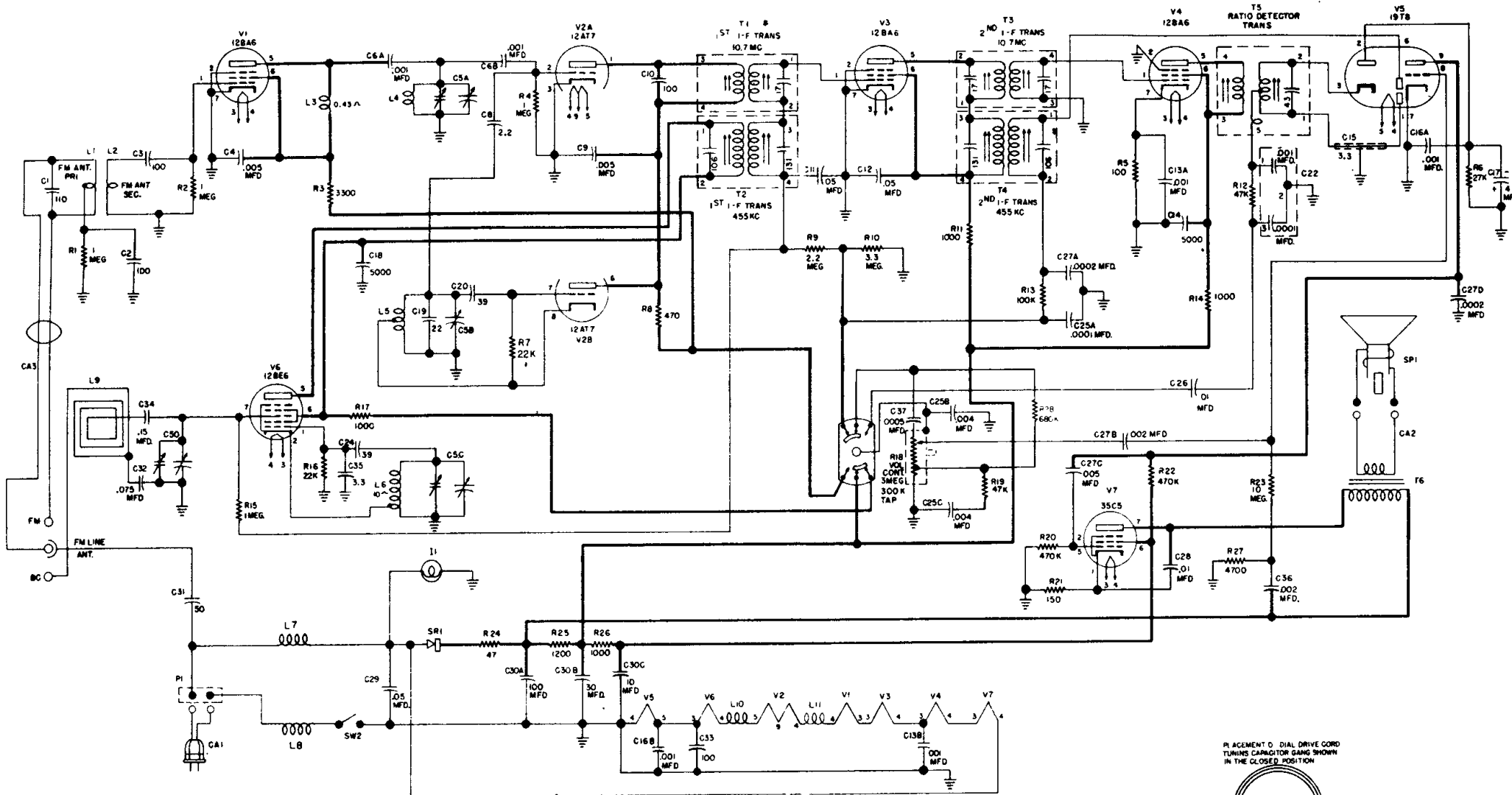


# CROSELEY

MODELS: 11-126U, 11-127U, 11-128U, 11-129U  
(Chassis 312)



**TYPE:** Seven-tube, two-band, superheterodyne.

**FREQUENCY RANGE:** Standard Broadcast Band; 540 to 1620 kc.

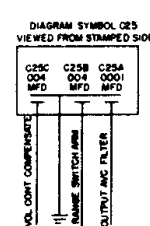
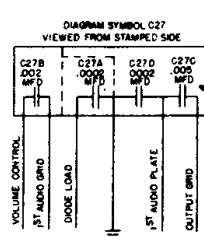
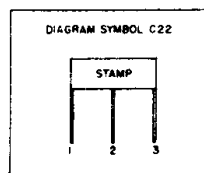
Frequency Modulation Band; 88 to 108 megacycles.

**INTERMEDIATE FREQUENCY:** Standard Broadcast Band; 455 kc.

Frequency Modulation Band; 10.7 mc.

**FM ANTENNA INPUT IMPEDANCE:** 75 ohms balanced.

**POWER SUPPLY:** a.c.—d.c.



## NOTES.

- 1 K=1000
- 1-F=455 KC AM  
1-F=10.7 MC FM
- ALL CAPACITANCE VALUES IN MMF  
AND ALL RESISTANCE VALUES IN OHMS  
UNLESS OTHERWISE SPECIFIED
- BAND CHANGE SWITCH SHOWN IN AM  
(COUNTER CLOCKWISE) POSITION
- NUMBER 1 TERMINAL ON I-F TRANSFORMERS  
CODED BY GREEN DOT NUMBERS PROGRESS CLOCKWISE,  
EXCEPT AS NOTED

