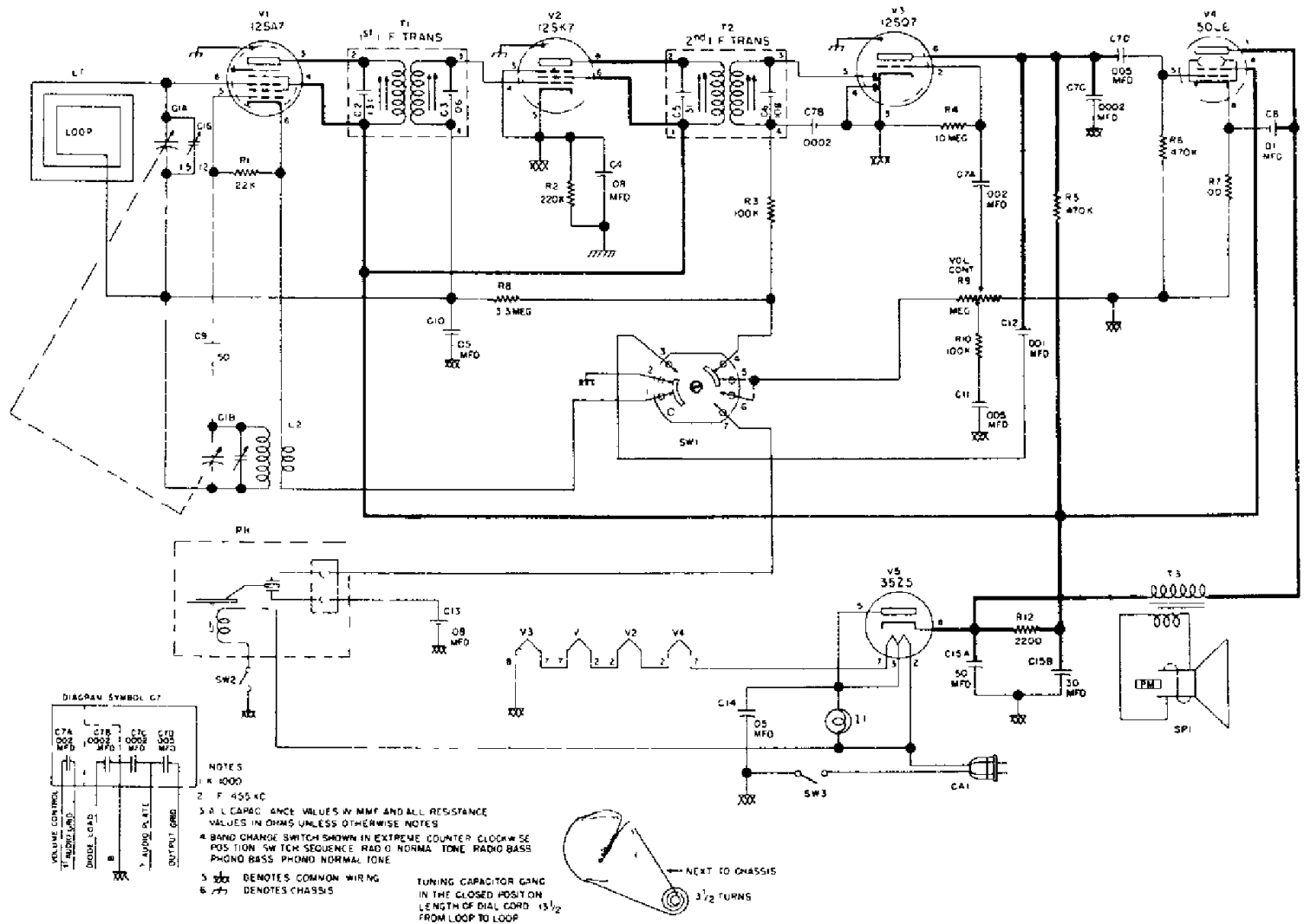
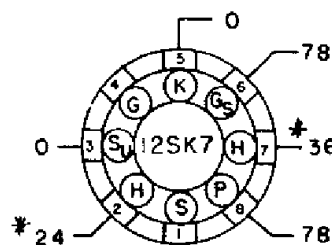


# CROSLLEY MODEL 10-145M

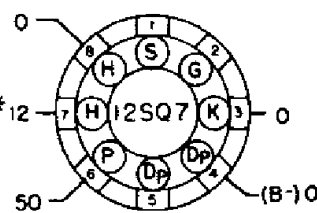


**SCHEMATIC DIAGRAM—MODEL 10-145M**

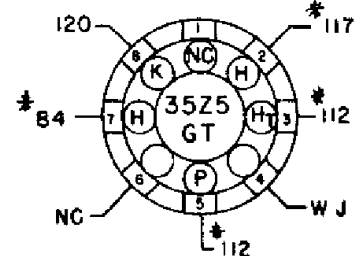
## I-F AMPLIFIER



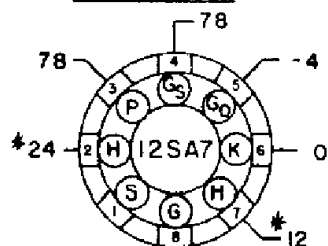
## DET-AMC & 1ST AUDIO AMP



## RECTIFIER



## CONVERTER



## NOTES

1. BOTTOM VIEW OF TUBE SOCKETS
2. VOLTAGES MEASURED FROM SOCKET LUG TO (B-) (PIN 4 OF 12SQ7) WITH AN ELECTRONIC VOLTMETER, TUNING GANG IN THE CLOSED POSITION WITH NO SIGNAL, VOLUME CONTROL AT MINIMUM
3. NC = NO CONNECTION
4. WJ = WIRING JUNCTION
5. \* = AC VOLTAGE
6. SUPPLY VOLTAGE 117V 60~
7. SOCKET VOLTAGE TOLERANCE  $\pm 10\%$

## OUTPUT

