

CROSBLEY

MODELS 10-102E, 10-103, 10-104W

Alignment Sequence	Signal Generator Output			Position of Dial Pointer	Adjust for Maximum Output
	Frequency in kc.	In Series with	To		
1	455	200 mmf.	High Side of Loop	1620	A & B
2	1620	*Radiated to Loop		1620	C
3	1400	*Radiated to Loop		1400	D

* Place signal generator output lead near the loop antenna.

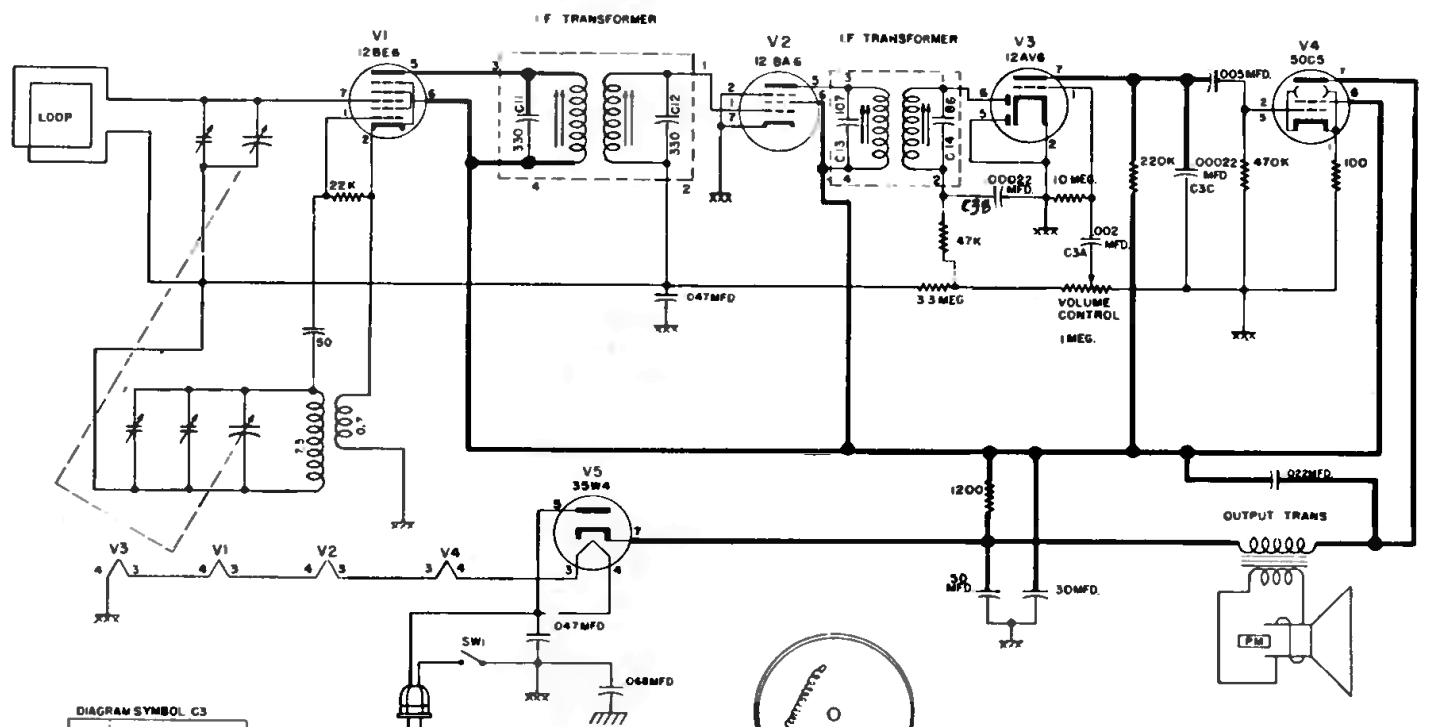
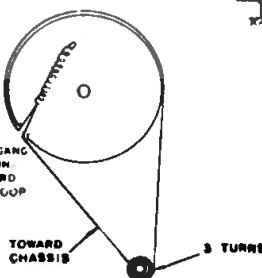
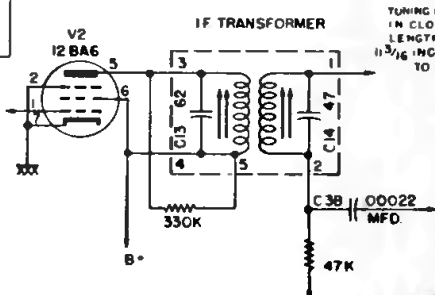
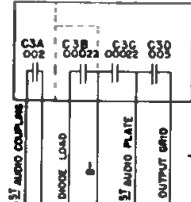
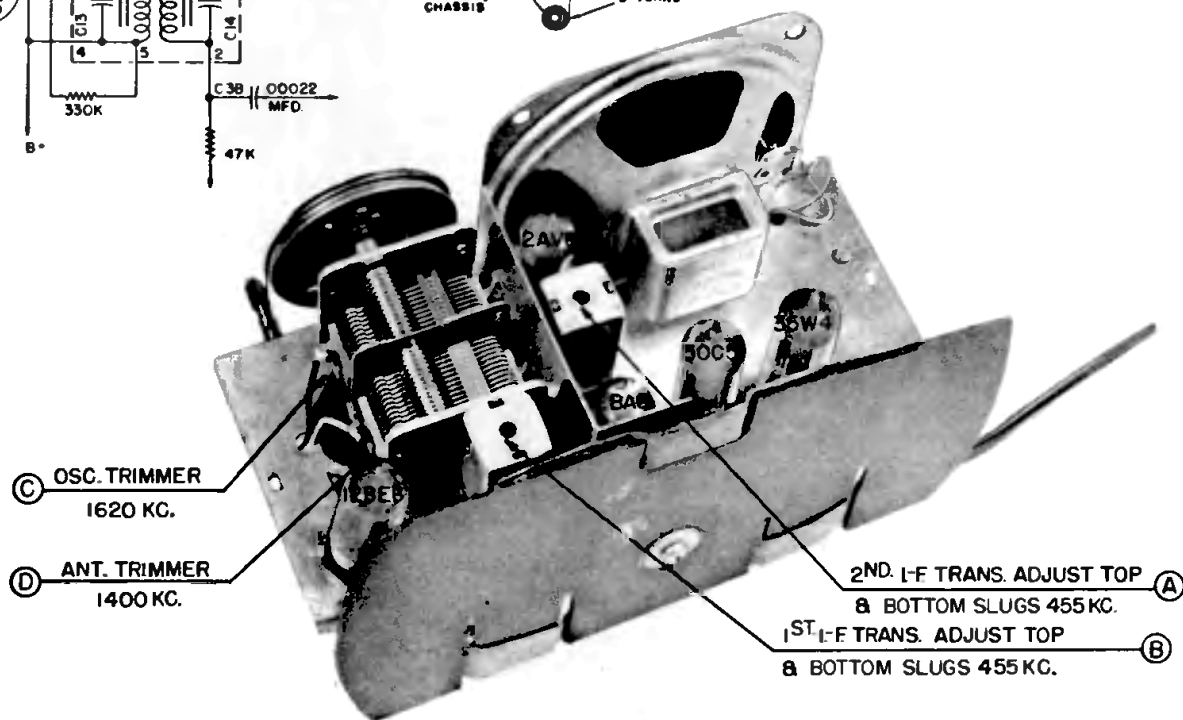


DIAGRAM SYMBOL C3



NOTES

1. K=1000
2. IF=455 KC.
3. ALL CAPACITANCE VALUES IN MMF AND RESISTANCE VALUES IN OHMS UNLESS OTHERWISE NOTED
4. // DENOTES CHASSIS GROUND
5. XXX DENOTES COMMON WIRING OMITTED FROM DRAWING FOR SAKE OF CLARITY



CHASSIS, TOP VIEW