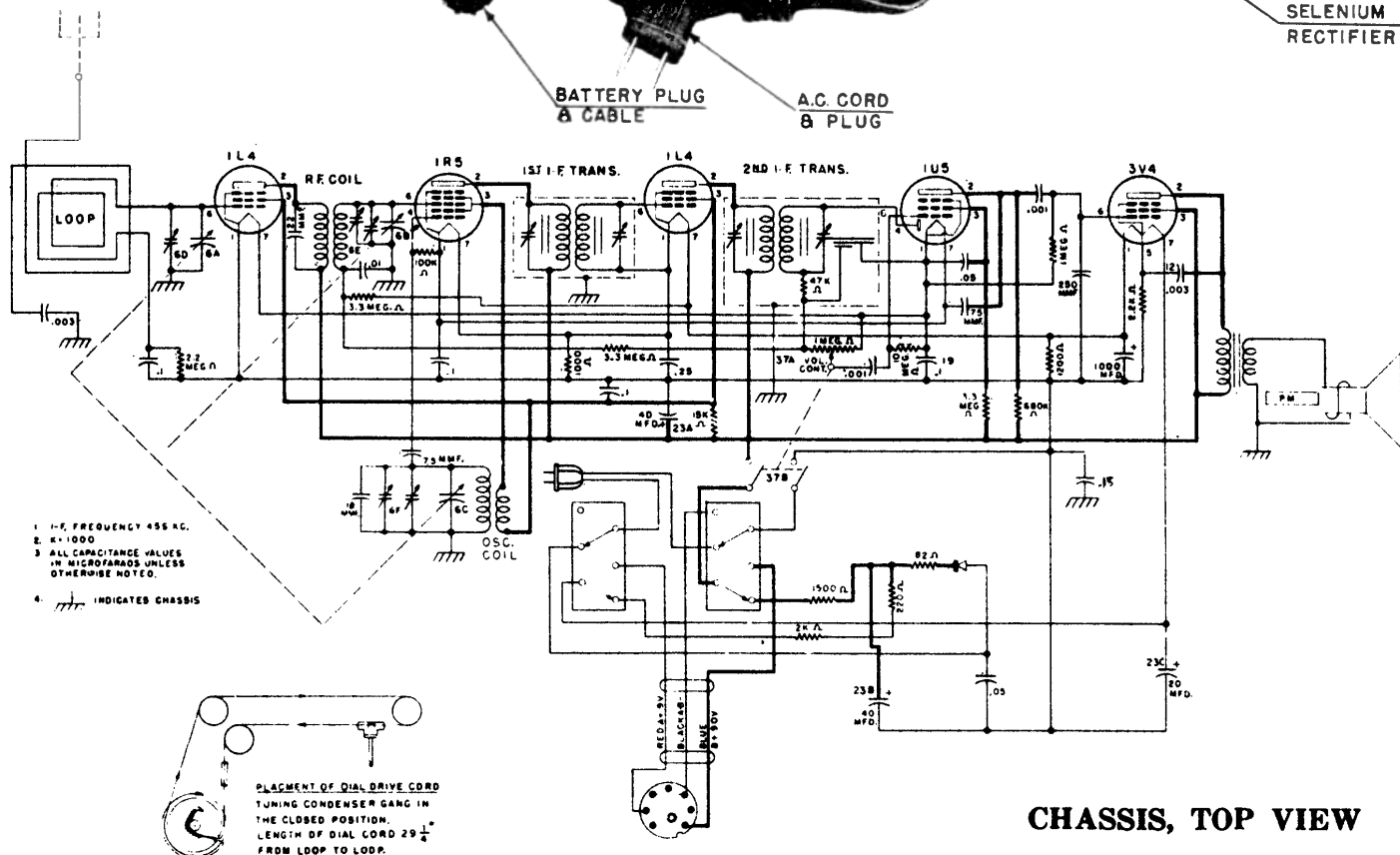
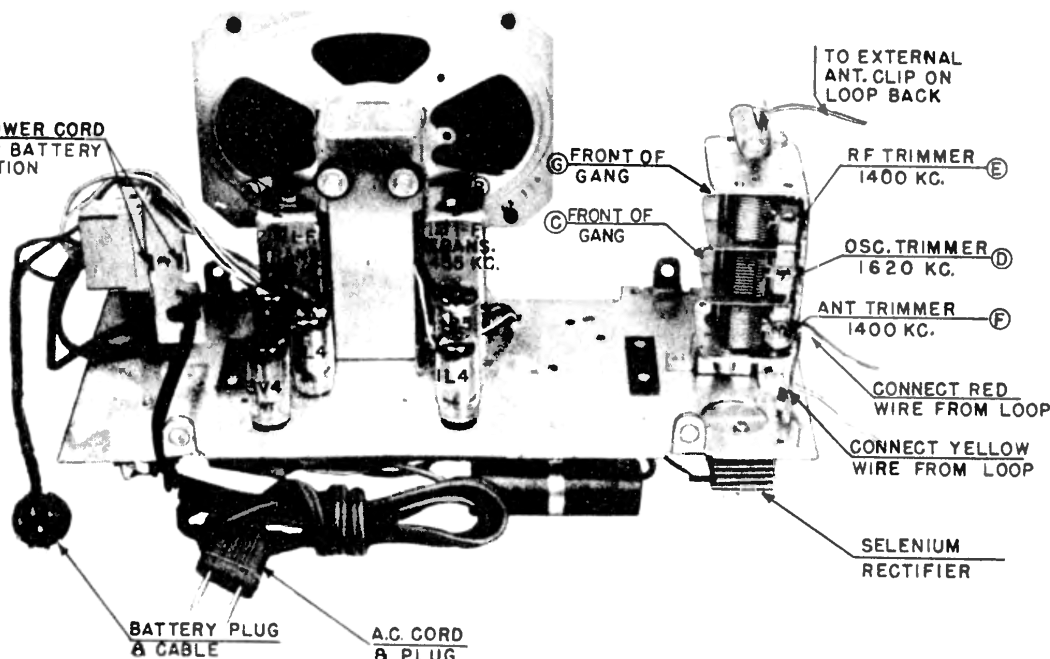


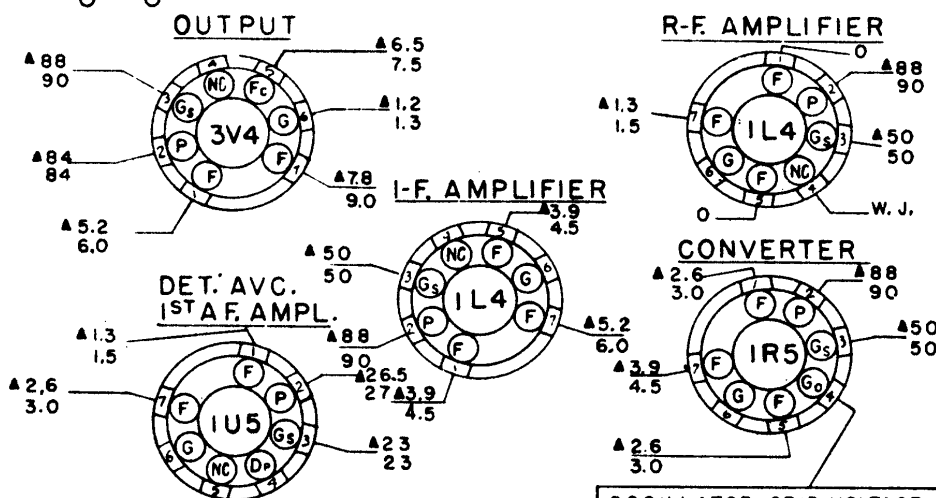
CROSLEY

MODEL: 9-302

INSERT POWER CORD
PLUG FOR BATTERY
OPERATION



CHASSIS, TOP VIEW



SOCKET VOLTAGE CHART

OSCILLATOR GRID VOLTAGE		
POSITION OF GANG	117 VOLT OPERATION	BATTERY OPERATION
CLOSED	-4	-3.8
OPEN	-8.6	-8.2

NOTES:

1. BOTTOM VIEW OF TUBE SOCKETS
2. VOLTAGES MEASURED WITH AN ELECTRONIC VOLTMETER FROM SOCKET LUG TO B-.
3. W.J. = WIRING JUNCTION.
4. N.C. = NO CONNECTION.
5. Δ VOLTAGES MEASURED WITH RADIO PLUGGED INTO 117 VOLT, 60 CYCLE LINE.
6. * = 60 CYCLE VOLTAGE.
7. ALL OTHER VOLTAGES MEASURED IN BATTERY OPERATION POSITION WITH "A" = 9 VOLTS, "B" = 90 VOLTS.
8. SOCKET VOLTAGE TOLERANCE 10%.