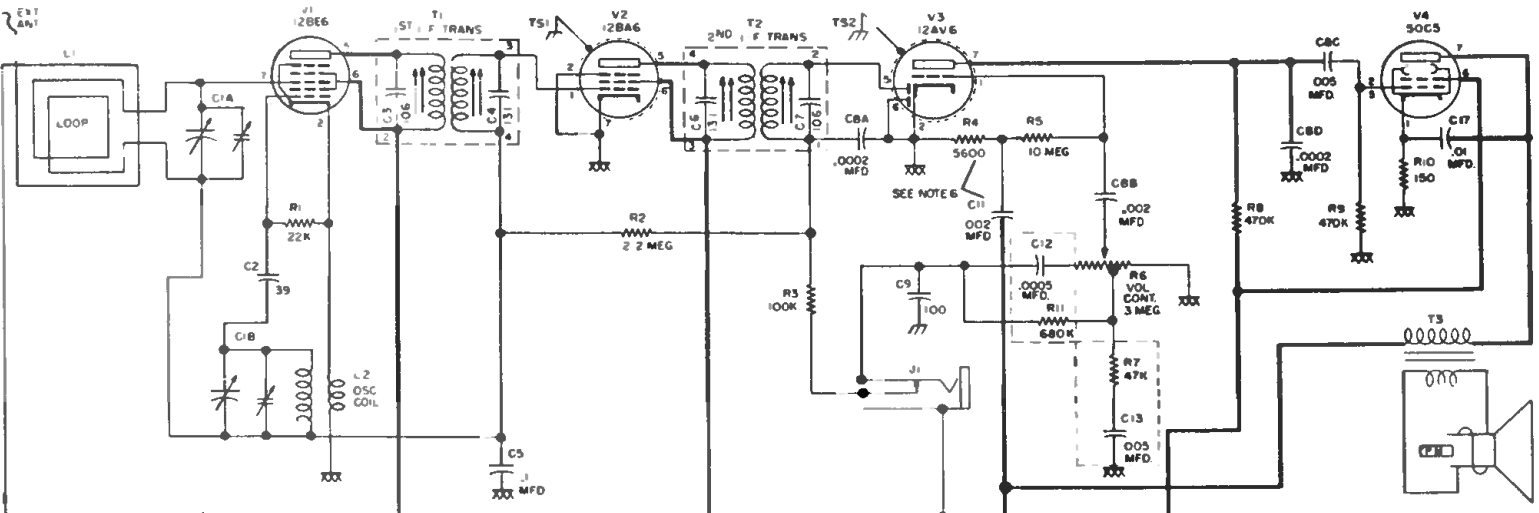


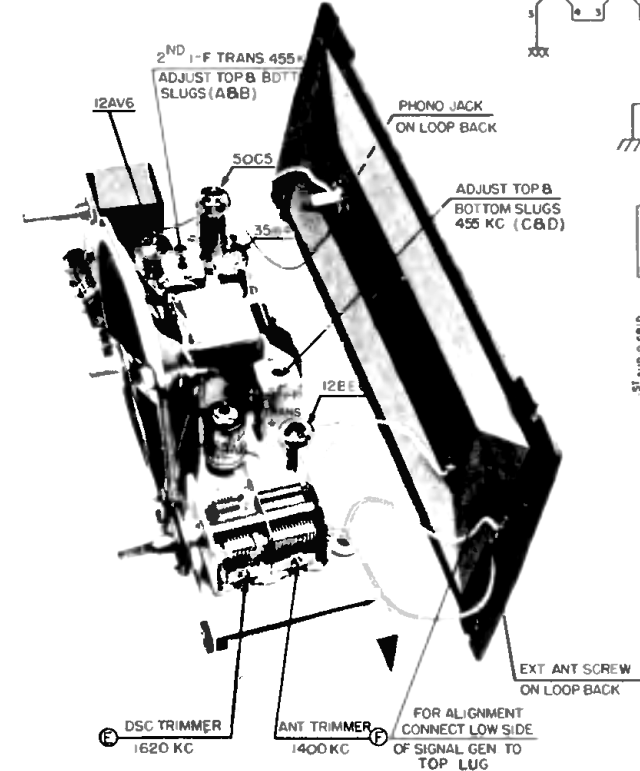
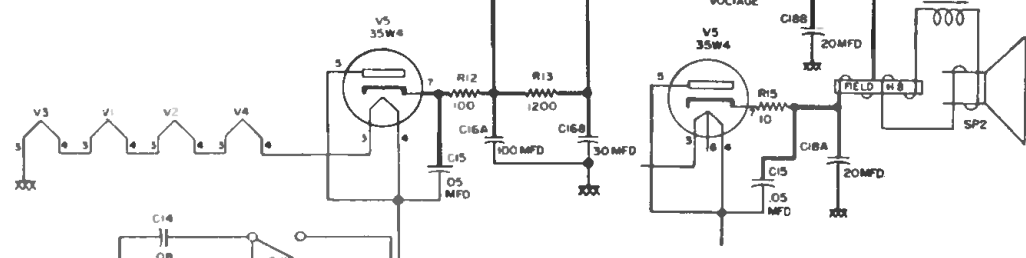
CROSLEY

MODELS 10-135, 10-136E, 10-137, 10-138, 10-139, 10-140
(Chassis 285, 285-1)

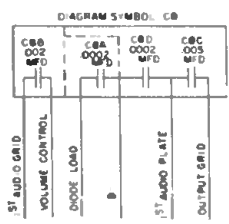


- NOTES
1 K=1000
2 ALL RESISTANCE VALUES IN OHMS AND CAPACITANCE VALUES IN MMF UNLESS OTHERWISE NOTED
3 NUMBER ONE TERMINAL ON I-F TRANSFORMERS CODED WITH GREEN DOT NUMBERS PROGRESS CLOCKWISE
4 1 F = 455 KC
5 CHASSIS
6 COMMON WIRING
7 R4 AND C11 USED WITH PM SPEAKERS ONLY

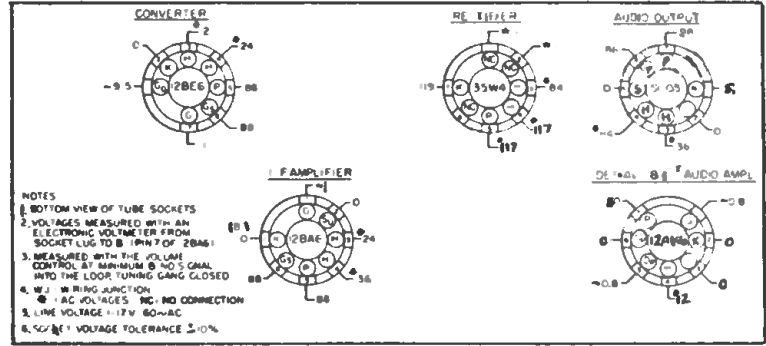
RECTIFIER & E.M. SPEAKER SCHEMATIC 285-1 CHASSIS



CHASSIS, TOP VIEW



SOCKET VOLTAGE CHART



ALIGNMENT CHART

Alignment Sequence	Signal Generator Output			Position of Dial Pointer	Adjust for Maximum Output
	Frequency in kc.	In Series with	To		
1	455	200 mmf.	External Ant. Screw	1620	* A, B, C & D
2	1620	200 mmf.	External Ant. Screw	1620	E
3	1400	200 mmf.	External Ant. Screw	1400	F

* Repeat adjustments until maximum output is obtained.