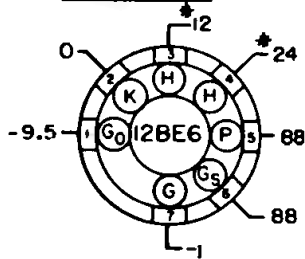
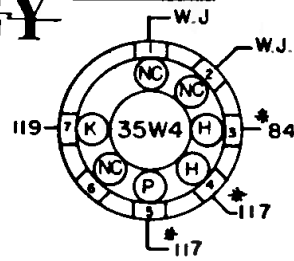


CONVERTER

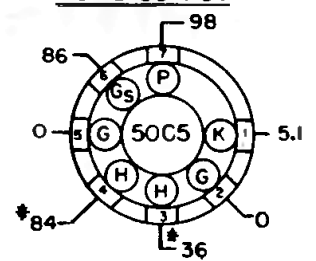


CROSBY

RECTIFIER



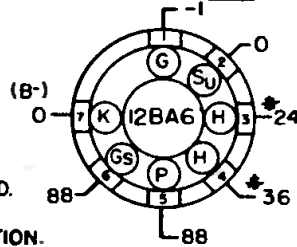
AUDID OUTPUT



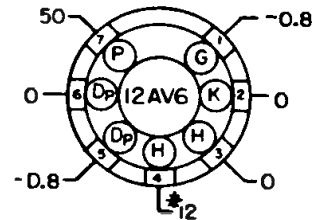
NOTES:

1. BOTTOM VIEW OF TUBE SOCKETS.
2. VOLTAGES MEASURED WITH AN ELECTRONIC VOLT-METER FROM SOCKET LUG TO B-(PIN 7 OF 12BA6)
3. MEASURED WITH THE VOLUME CONTROL AT MINIMUM & NO SIGNAL INTO THE LOOP, TUNING GANG CLOSED.
4. W.J. = WIRING JUNCTION.
5. * = AC VOLTAGES. NC = NO CONNECTION.
6. LINE VOLTAGE = 117V., 60~AC.
7. SOCKET VOLTAGE TOLERANCE $\pm 10\%$

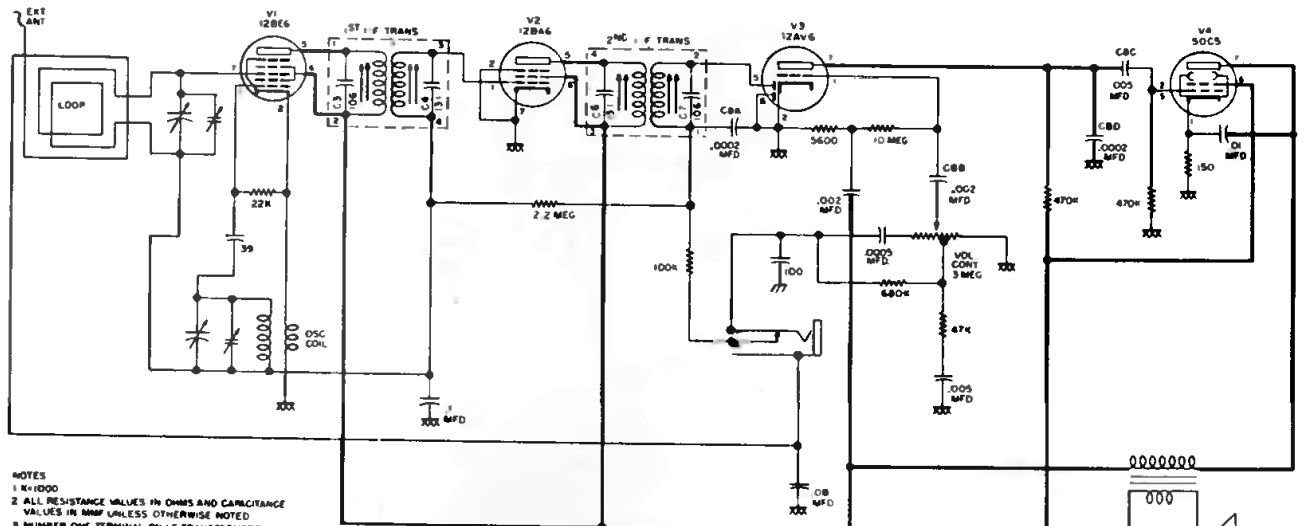
I-F AMPLIFIER



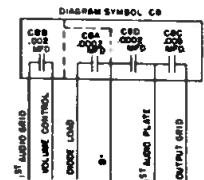
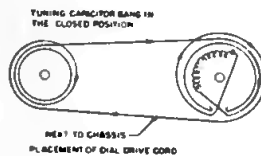
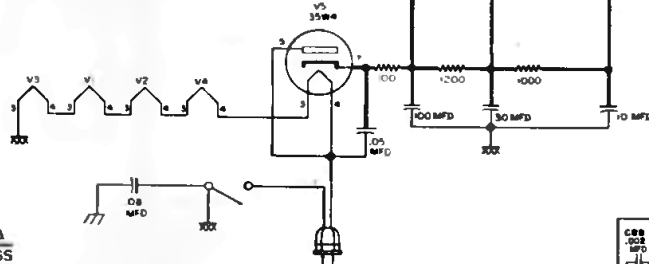
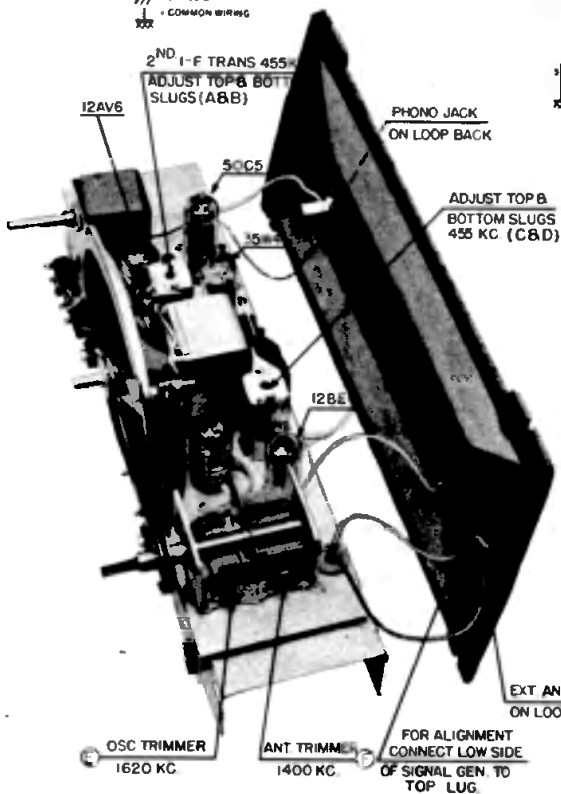
DET-AVC & 1ST AUDID AMPL.



SOCKET VOLTAGE CHART



- NOTES:
- 1 K=1000
 - 2 ALL RESISTANCE VALUES IN OHMS AND CAPACITANCE VALUES IN MUF UNLESS OTHERWISE NOTED
 - 3 NUMBER ONE TERMINAL ON I-F TRANSFORMERS CODED WITH GREEN DOT, NUMBERS PROGRESS COUNTERWISE
 - 4 I-F = 455 KC
 - 5 CHASSIS
 - 6 COMMON WIRING



CROSBY

MODELS 10-135, 10-136E, 10-137, 10-138, 10-139, 10-140