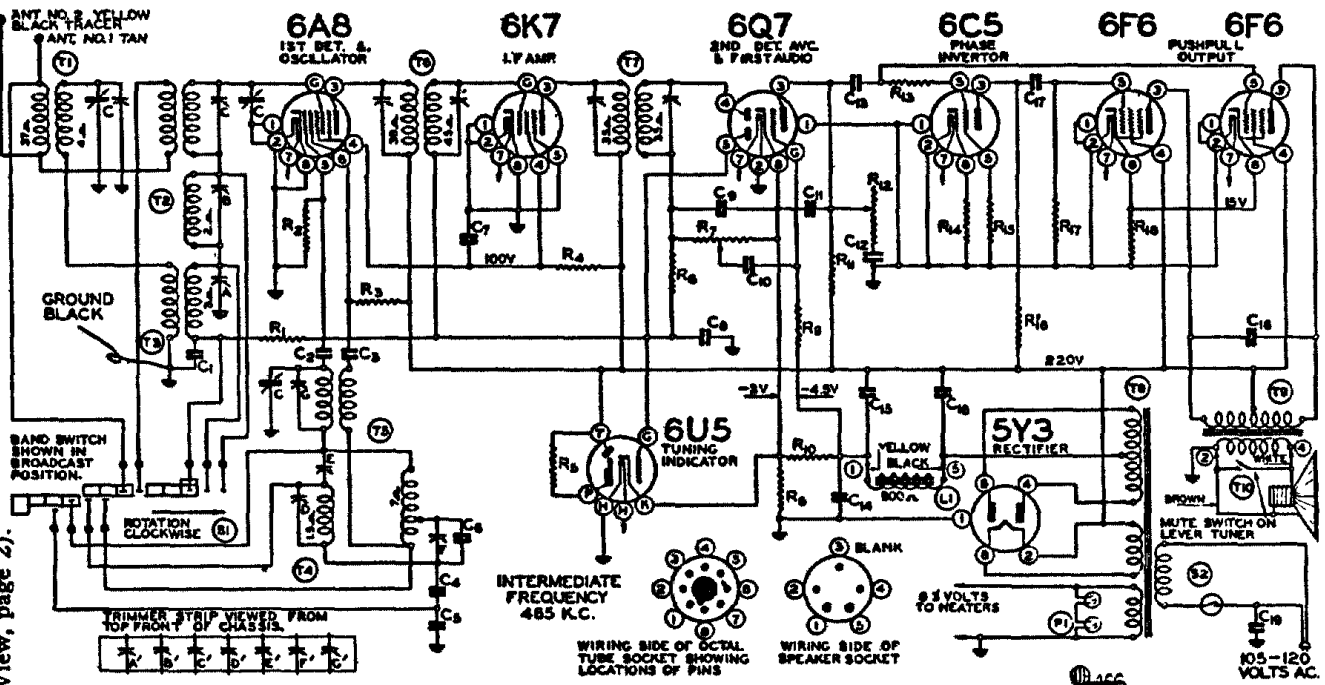


BELMONT RADIO CORP.

For conventional types of antennas connect the yellow wire to the antenna lead and the yellow with black tracer and the black wire together to the ground lead.

When a doublet antenna is used connect the yellow wire and the yellow with black tracer wire to the doublet antenna and the solid black wire to the ground lead. (See Fig. 1—Top View, page 2).



Code No.	Part No.	Description	Code No.	Part No.	Description
RESISTORS					
R1	130-103	100M ohm - 1/3 w. 10%	C5	129-84	.003 Mica 2-1/2%
R2	130-12	50M ohm - 1/3 w. 20%	C6	129-88	.0006 Mica 5%
R3	130-123	15M ohm - 1/2 w. 10%	C7	100-1	.1 x 400 v. - 50 - 10%
R4	130-196	30M ohm - 1 w. 10%	C8	100-26	.02 x 400 v. 25%
R5	130-110	1 megohm - 1/10 w. 20%	C9	129-5	.0001 Mica 20%
R6	130-4	3 megohm - 1/3 w. 20%	C10	100-26	.02 x 400 v. 25%
R7	101-97	1 megohm volume control	C11	129-2	.0005 Mica 20%
R8	130-198	40 ohm - 1/2 w. 10%	C12	100-57	.006 x 600 v. - 10 - 20%
R9	130-4	3 megohm - 1/3 w. 20%	C13	100-26	.02 x 400 v. 25%
R10	130-197	20 ohm - 1/3 w. 10%	C14	100-20	.1 x 200 v. 25%
R11	130-103	100M ohm - 1/3 w. 10%	C15	103-14	16 mfd. Regulating Lytic - 275 w.v.
R12	101-98	300M ohm - tone control	C16	103-6	8 mfd. Lytic - 350 w.v.
R13	130-163	400M ohm - 1/3 w. 10%	C17	100-26	.02 x 400 v. 25%
R14	130-22	5M ohm - 1/3 w. 20%	C18	100-37	.003 x 600 v. 10%
R15	130-103	100M ohm - 1/3 w. 10%	C19	100-61	.02 x 600 v. 20% Bakelite
R16	130-12	50M ohm - 1/3 w. 20%	T1	111-88	B.C. Pre-selector complete
R17	130-102	500M ohm - 1/3 w. 10%	T2	111-87	S.W.M.W. Antenna Coil - complete
R18	130-195	250 ohm - 1.2 w. 10%	T3	111-86	B.C. Antenna Coil Complete
CONDENSERS					
C	102-62	3 gang variable	T4	110-69	M.W. Osc. Coil Complete
C1	100-22	.05 x 200 v. - 25%	T5	110-70	S.W.B.C. Osc. Coil Complete
C2	129-67	.00004 Mica 10%	T6	108-105D	Input I.F. Coil - complete 465 kc.
C3	100-25	.002 x 600 v. 25%	T7	108-106E	Output I.F. Coil - complete 465 kc.
C4	129-83	.0027 Mica 2-1/2%	T8	104-87B	Power Transformer
			T9	105-54	Output Transformer
			T10	114-99	10" Dynamic speaker
			L1		900 ohm speaker field
			S1	125-42	Wave change switch
			S2		Off-on switch on tone control
			P1	107-94	6-8 volt pilot light

Mica condensers are coded with an additional dot indicating tolerance:

Tolerance percent	Color of Dot
2 1/2%	White
5%	Green
10%	Blue
15%	Yellow
20%	Red
More Than 20%	None

FREQUENCY RANGE
540 to 1750 K.C.
1730 to 5800 K.C.
5.5 to 18.1 M.C.

**CHASSIS
MODEL 860
Series A**

(Serial No. 7L897400 and up)

Voltages taken from different points of circuit to chassis are measured with volume control full on, all tubes in their sockets and speaker connected, with a volt meter having a resistance of 1000 ohms per volt. These voltages are clearly indicated on the circuit diagram.

IN ORDER TO PREVENT SIGNAL FROM ACTING UPON AVC AND AFFECTING ACCURACY OF VOLTAGE MEASUREMENTS, AERIAL AND GROUND LEADS SHOULD BE SHORT CIRCUITED WHILE MAKING MEASUREMENTS.

All voltages are to be measured with 115 volts on the primary of the power transformer.

Receivers of this model which are to be used on voltages or frequencies other than 105-115 volts, 60 cycles are so marked. The power consumption of this receiver is 75 watts.

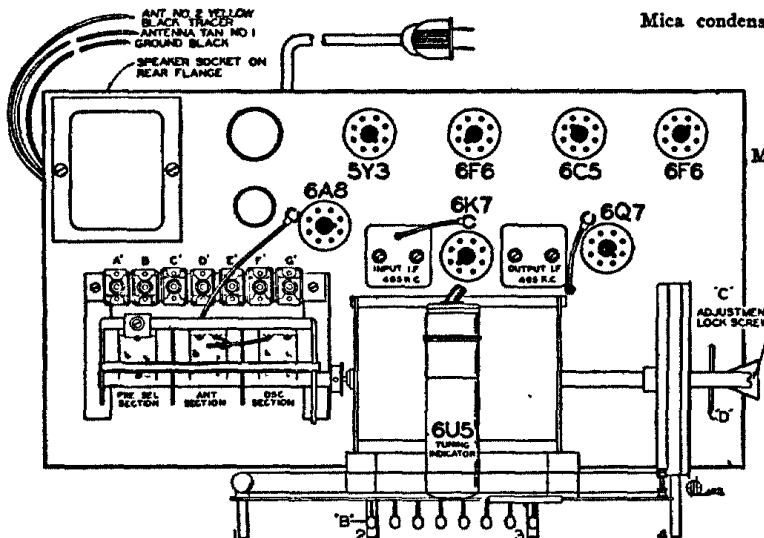
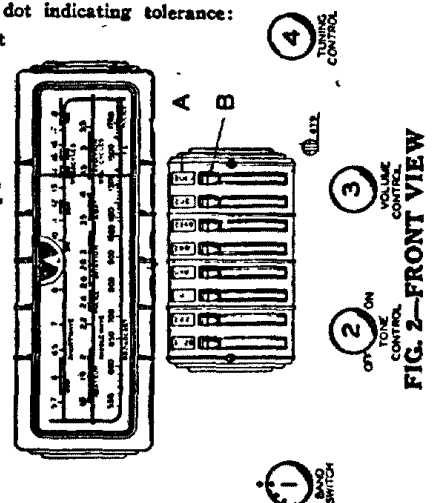


FIG. 1—TOP VIEW



3-Band All-Wave A.C. Superheterodyne Receiver