

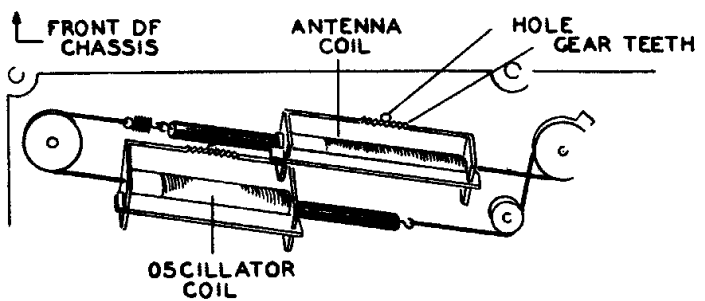
Belmont MODEL 5240

NOTES
VOLTAGES TAKEN WITH A 1000-OHMS-PER-VOLT VOLT-METER.
DC SOCKET VOLTAGE READINGS ARE TAKEN BETWEEN PINS DESIGNATED AND B-.

LINE VOLTAGE 117 AC

VOLTAGES SHOWN ARE OC UNLESS OTHERWISE INDICATED.
CAPACITOR VALUES SHOWN ARE "MF" UNLESS OTHERWISE INDICATED.

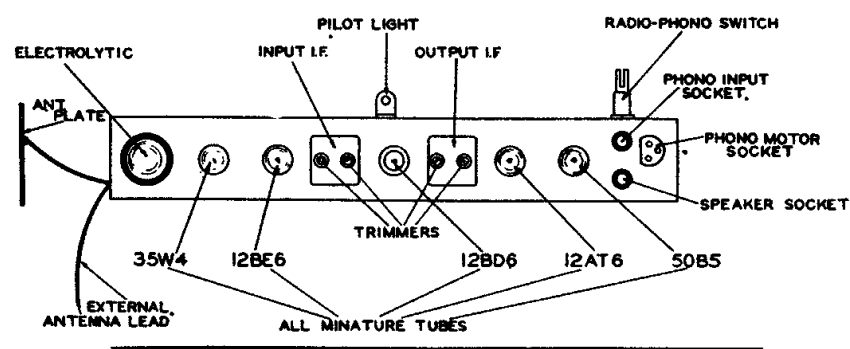
ALL RESISTORS ARE 1/2 WATT UNLESS OTHERWISE INDICATED.



View of Coil Assembly

The antenna coil assembly is movable left to right. When making the adjustment as required in the alignment procedure, move the coil assembly very slowly, either by hand or by pivoting one edge of a screwdriver blade in the hole and engaging the blade in the gear teeth of the coil form.

Intermediate Freq.....455 kc.



CHASSIS VIEW

